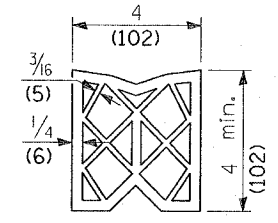
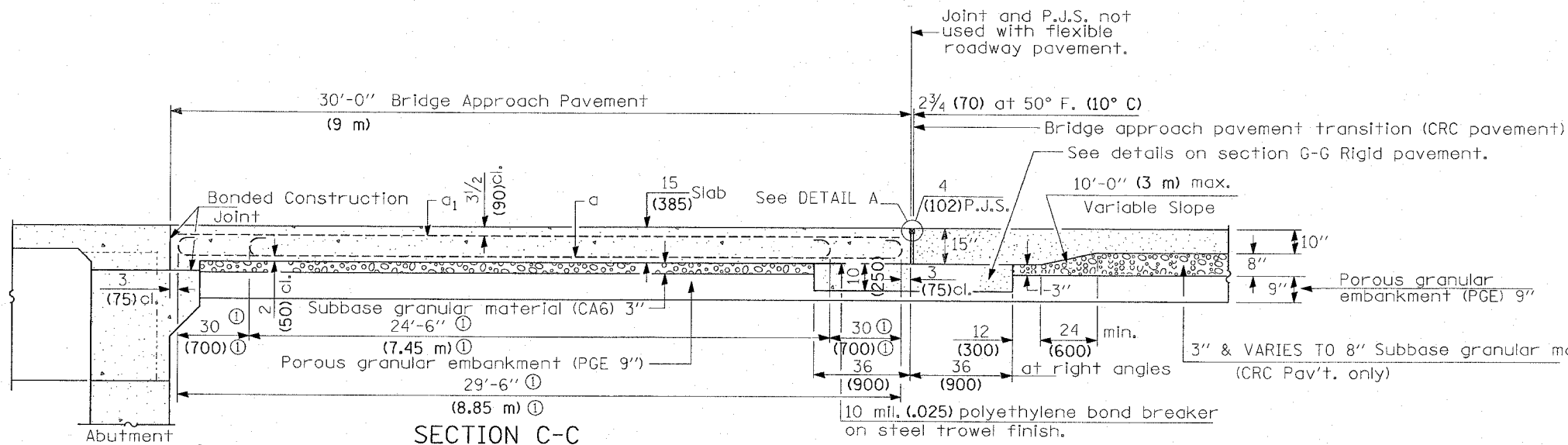
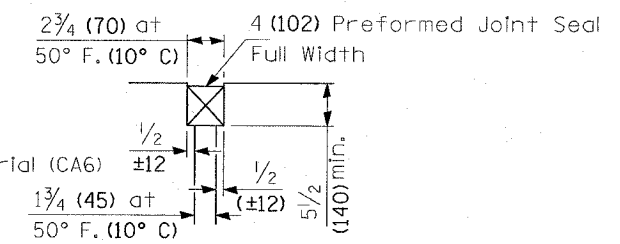


F.A.P. RTE.	SECTION	COUNTY	TOTAL SHEETS	SHEET NO.
370	0103 I-2	COOK	27	20
STA.		TO STA.		
FED. ROAD DIST. NO. 1		ILLINOIS FED. AID PROJECT		

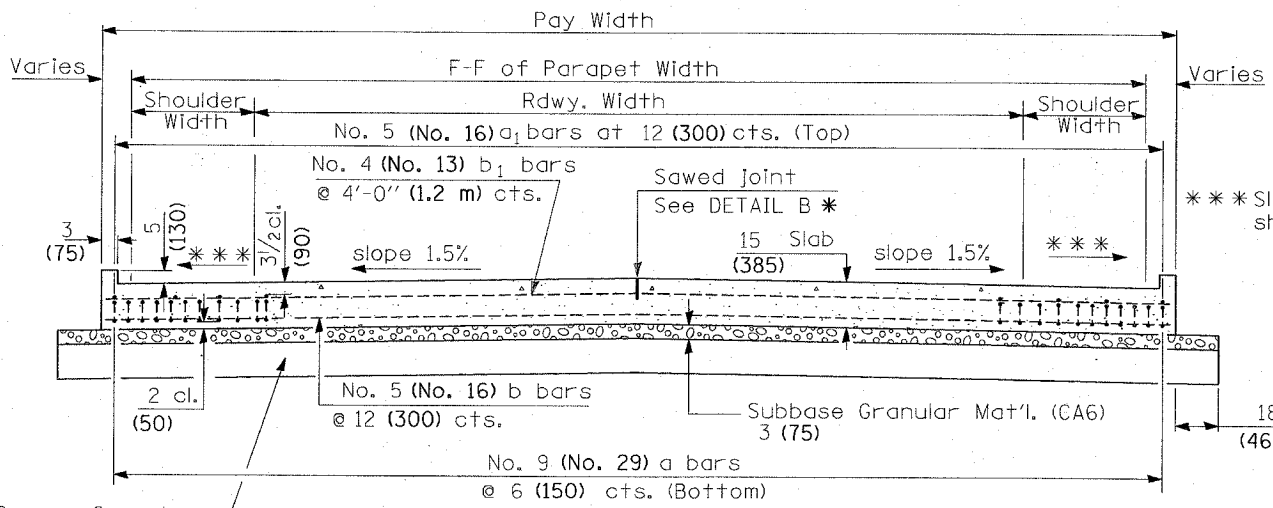


**PREFORMED JOINT SEAL**



**DETAIL A**

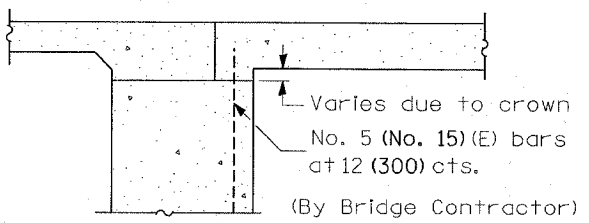
① Stagger No. 9 (No. 29) a bars as shown on plan - full width



**SECTION D-D**

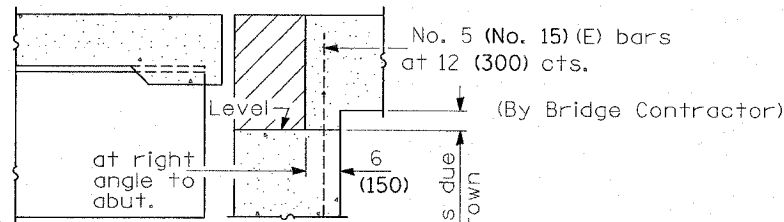
(See Plan for Dimensions not shown)  
All reinforcement bars shall be epoxy coated.

Proposed Pourse Granular Embankment (PGE) 9 (225)



**SECTION E-E**

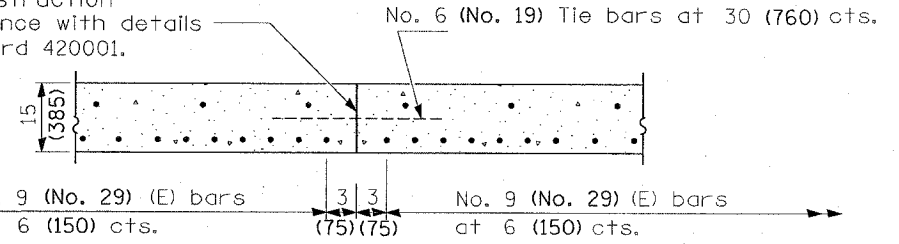
(Integral Abutments)



**SECTION E-E**

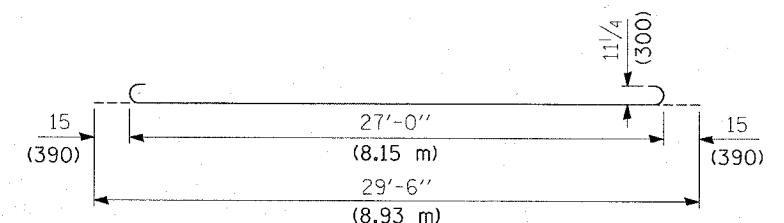
(Jointed Abutments)

Longitudinal Construction Joint in accordance with details shown on Standard 420001.

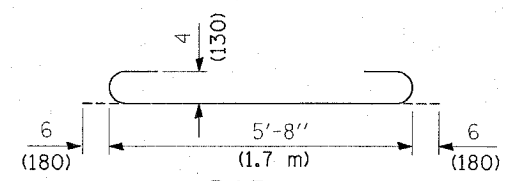


**OPTIONAL LONGITUDINAL CONSTRUCTION JOINT**

As approved by the Engineer, the Contractor may elect to reduce the widths of pour by use of the Optional Longitudinal Construction Joint shown. Joints shall be located at the edge of a traffic lane.



**BAR a**



**BAR a<sub>2</sub>**

All dimensions are in millimeters (inches) unless otherwise shown.

**DESIGN STRESSES**  
 f<sub>y</sub> = 60,000 p.s.i. (400 MPa)  
 f'c = 3,500 p.s.i. (24 MPa)  
 n = 8.5

REVISIONS	
NAME	DATE

ILLINOIS DEPARTMENT OF TRANSPORTATION  
 GREGORY STREET/ WESTERN AVE.  
 BRIDGE APPROACH PAVEMENT  
 DETAILS

SCALE: VERT. 1" = 4'-0"  
 HORIZ. 1" = 20'-0"  
 DATE: \_\_\_\_\_ DRAWN BY: \_\_\_\_\_  
 CHECKED BY: \_\_\_\_\_

PLOT DATE = 8/17/2007  
 PLOT SCALE = 1/8" = 1'-0"  
 USER NAME = drvkdesign