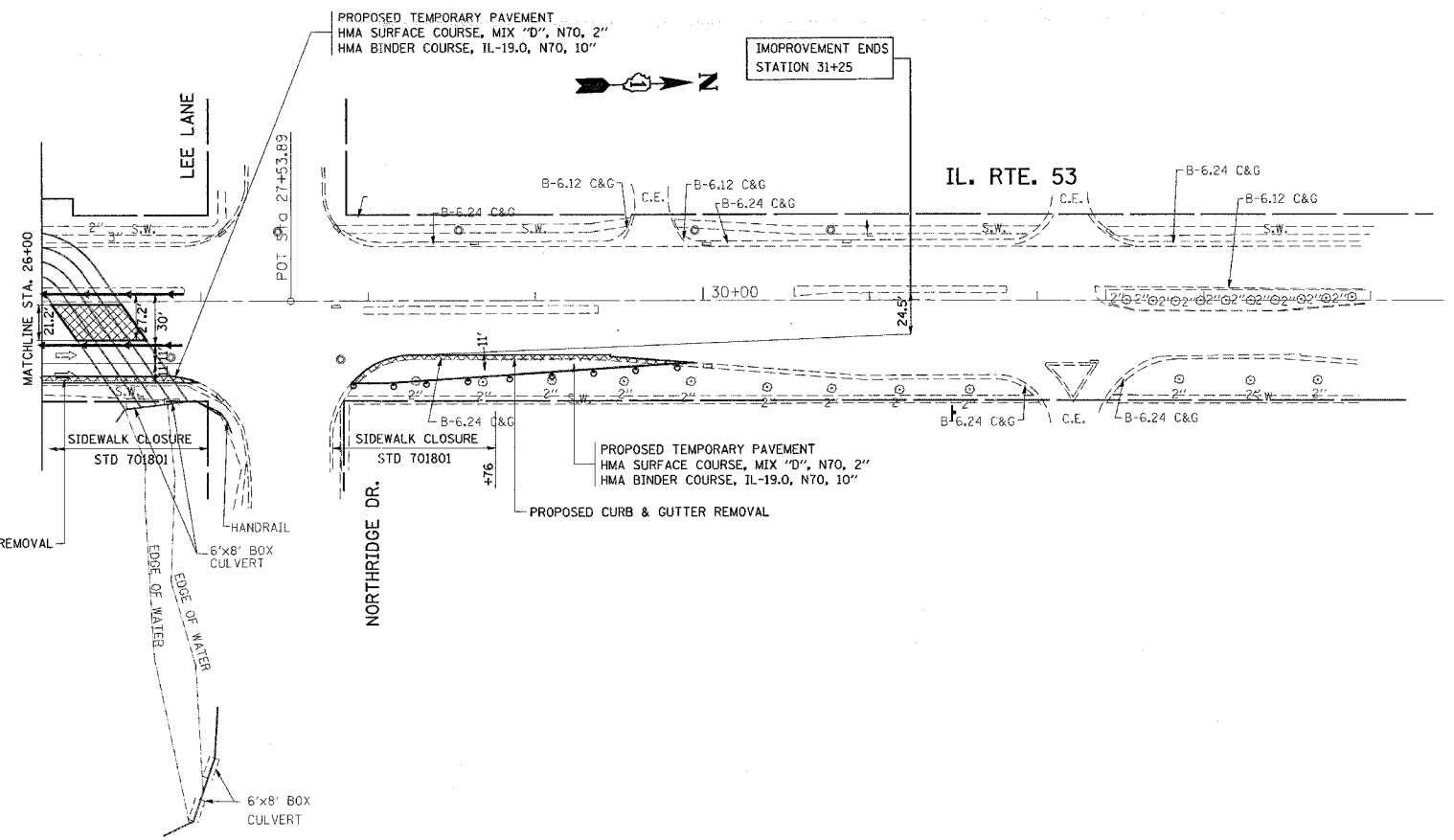
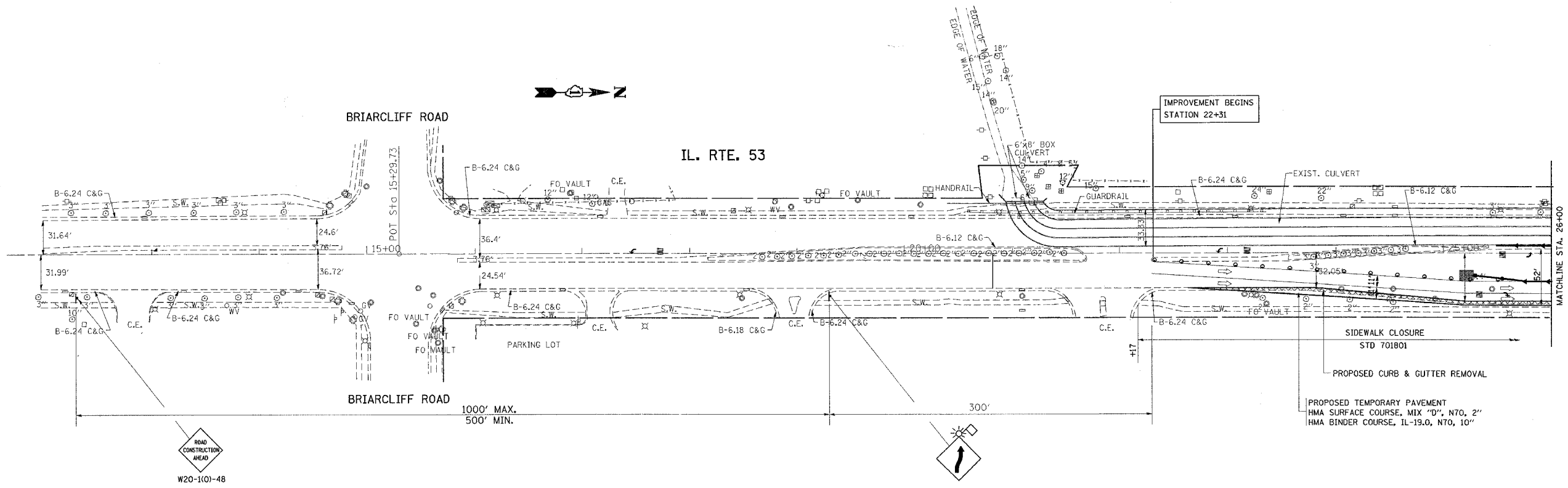


F.A.P. RTE.	SECTION	COUNTY	TOTAL SHEETS	SHEET NO.
870	534 R-1-T	WILL	42	8
STA.		TO STA.		
FED. ROAD DIST. NO. 1		ILLINOIS FED. AID PROJECT		



	WORK AREA
	SIGN
	DRUM WITH STEADY BURNING LIGHT, 25' C-C
	TYPE C REFLECTOR, 25' C-C
	TEMPORARY CONCRETE BARRIER
	IMPACT ATTENUATOR
	STEADY BURNING LIGHTS AND DOUBLE VERTICAL PANELS
	4" WHITE SOLID LANE LINE, WET TEMP. PAVEMENT MARKING TAPE, TYPE III

PLOT DATE = 10/22/2007
FILE NAME = c:\projects\151601\design\m32
PLOT SCALE = 5/8"=1'-0"
REFERENCE = *REF*

Rev. Sheet 10-30-07

REVISIONS		ILLINOIS DEPARTMENT OF TRANSPORTATION
NAME	DATE	
		ILLINOIS ROUTE 53 OVER LILY CACHE CREEK SUGGESTED STAGING AND TRAFFIC CONTROL STAGE I

SCALE: VERT. DRAWN BY
 HORIZ. CHECKED BY
DATE