

Benchmark: Chiseled square on south end of south wingwall, northeast end of culvert. Elev. 693.33

Existing Structure: SN 099-2008 built in 1930 as a four-barrel, 7.5' x 6' R.C. box culvert. Original length approximately 48' along centerline of culvert, extended 450' to the south and 18' east in 1980, and extended another 24' to the east in 2000. 1930 section to be removed and replaced. Two lanes of traffic in each direction to be maintained utilizing stage construction.

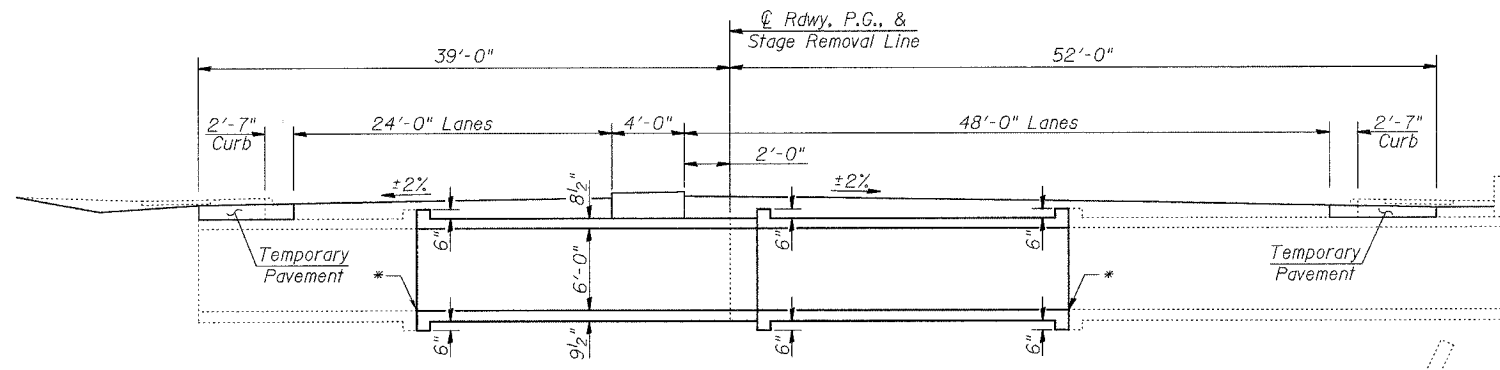
No Salvage.

F.A.P.	SECTION	COUNTY	TOTAL SHEETS	SHEET NO.
870	534 R 1	WILL	42	10
FED. ROAD DIST. NO. 1		BALANCE	FED. AID PROJECT-	
Contract No.: 62556				

SHEET NO.
1 of 8

GENERAL NOTES

Reinforcement bars shall conform to the requirements of ASTM A 706 Gr 60 (IL Modified). See Special Provisions
 Plan dimensions and details relative to existing plans are subject to routine variations. The Contractor shall field verify existing dimensions and details affecting new construction and make necessary approved adjustments prior to construction or ordering of materials. Such variations shall not be cause for additional compensation for a change in scope of the work, however, the Contractor will be paid for the quantity actually furnished based upon the unit price bid for the work.



LONGITUDINAL SECTION

* Match Existing Invert Elevation (+686.0)

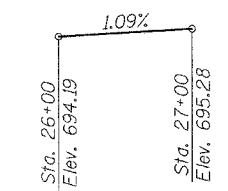
TOTAL BILL OF MATERIAL

ITEM	UNIT	QUANTITY
Removal of Existing Structures	Each	1
Temporary Sheet Piling	Sq. Ft.	878
Concrete Box Culverts	Cu. Yd.	131.7
Reinforcement Bars	Pound	44,240
Bar Splicers	Each	198
Expansion Bolts 3/4 Inch	Each	118
Structural Repair of Concrete (Depth Equal to or Less Than 5 in.)	Sq. Ft.	48
Culvert To be Cleaned	Foot	570

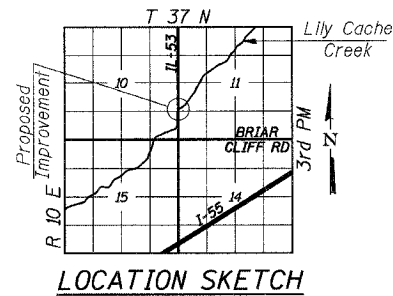
INDEX OF SHEETS

Sheet No.	Description
1	General Plan
2	Stage Construction Details
3	Culvert Details - I
4	Culvert Details - II
5	Culvert Repair Details
6	Bar Splicer Assembly Details
7	Temporary Concrete Barrier For Stage Construction
8	Borings

APPROVED
 FOR STRUCTURAL ADEQUACY ONLY
Robert E. Anderson (SEAL)
 ENGINEER OF BRIDGES AND STRUCTURES



PROFILE GRADE
(along Centerline Roadway)



LOCATION SKETCH

FINAL PLANS

JUL 5 2007

LOADING HS20-44

Allow 50#/sq. ft. for future wearing surface.

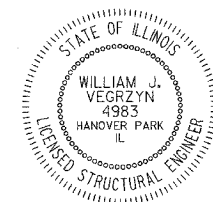
DESIGN SPECIFICATIONS

AASHTO 17th Ed. - 2002

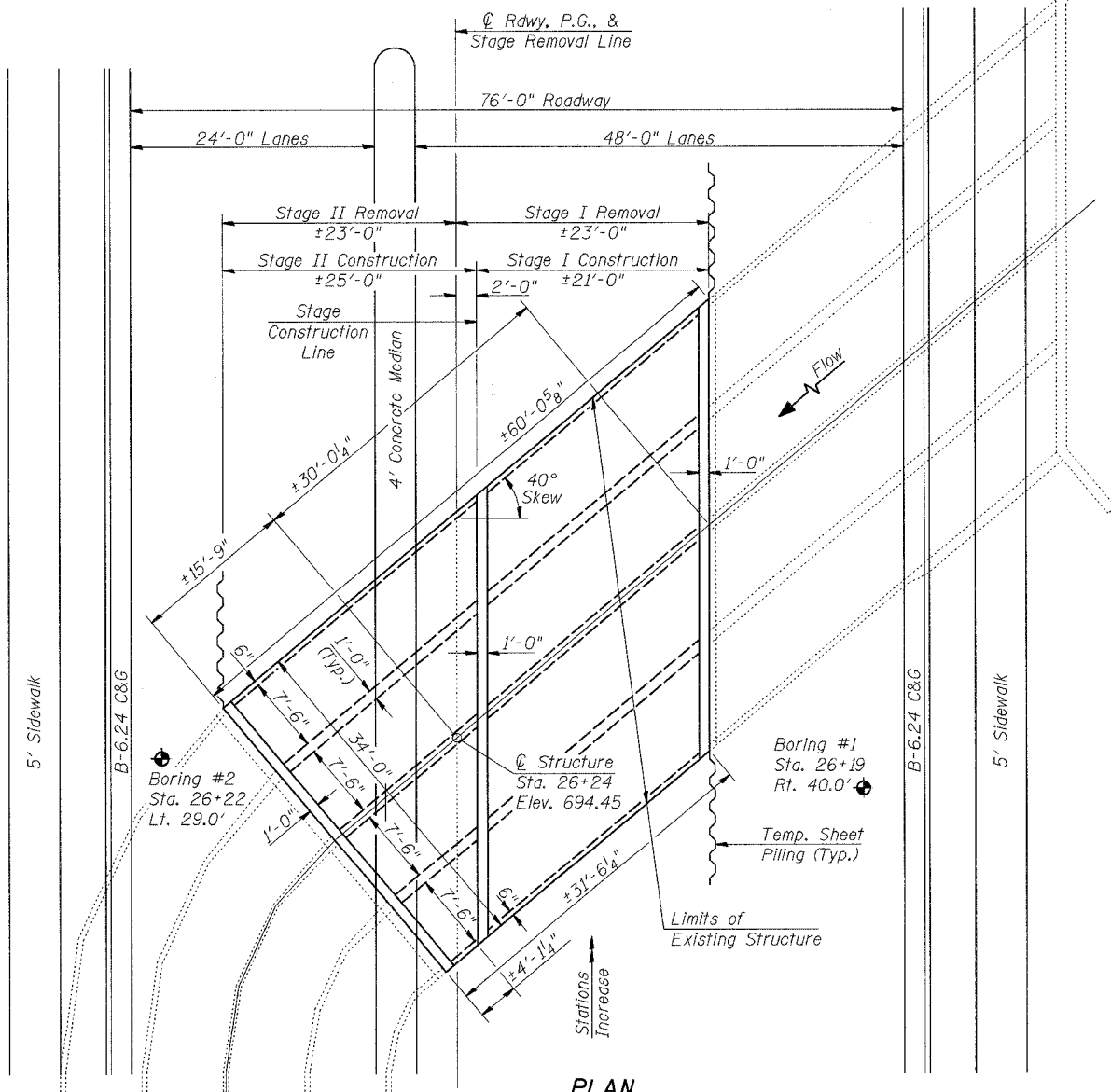
DESIGN STRESSES

FIELD UNITS

$f'_c = 3,500$ psi
 $f_y = 60,000$ psi (reinforcement)



William J. Vegryz 8/31/07
 Expires 11-30-08



PLAN



REVISIONS	
NAME	DATE

ILLINOIS DEPARTMENT OF TRANSPORTATION
 GENERAL PLAN
 IL ROUTE 53 OVER LILY CACHE CREEK
 WILL COUNTY
 STATION 26+24
 STRUCTURE NO. 099-2008
 DRAWN BY BLB
 CHECKED BY WJV
 DATE: 6-12-07