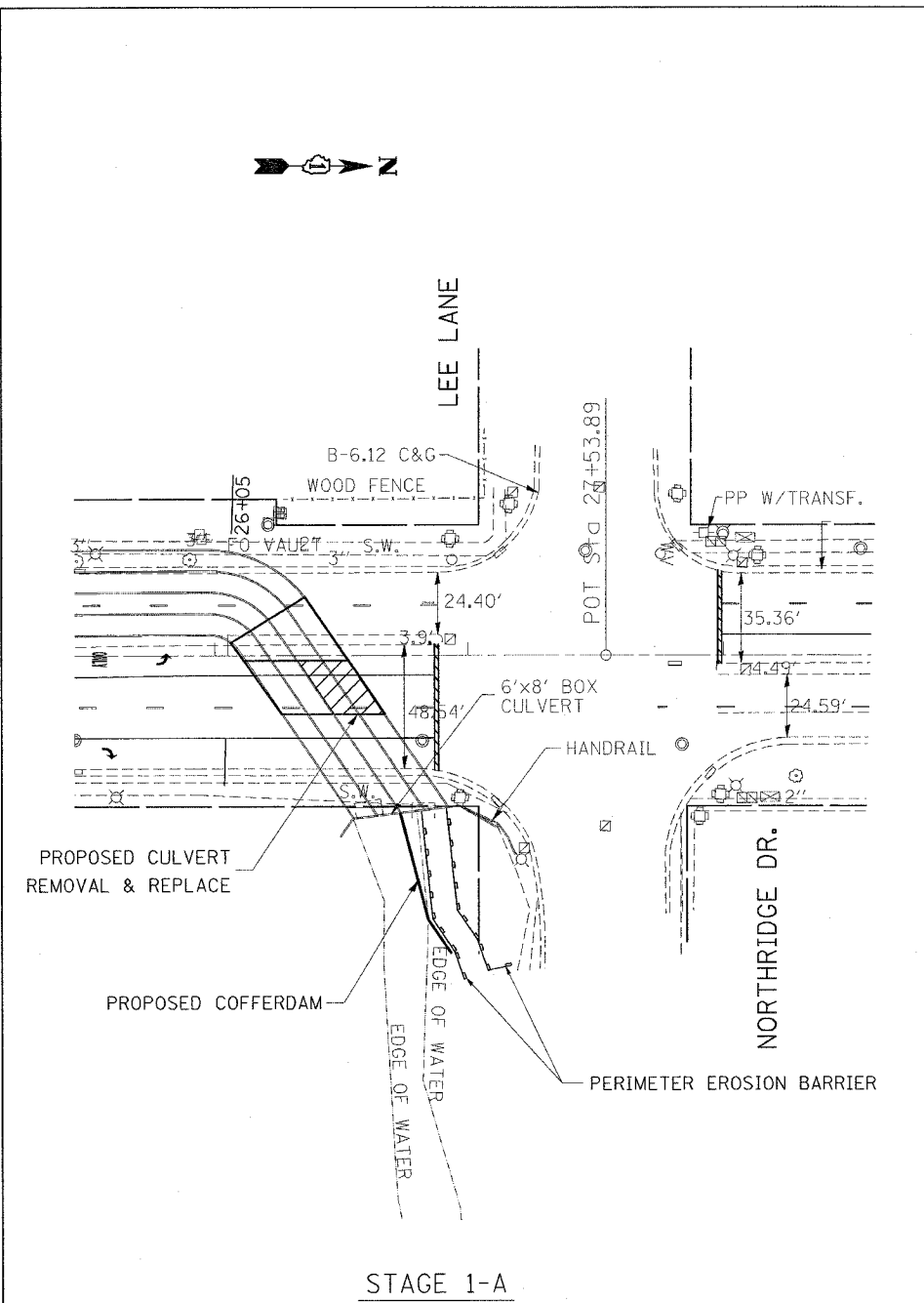
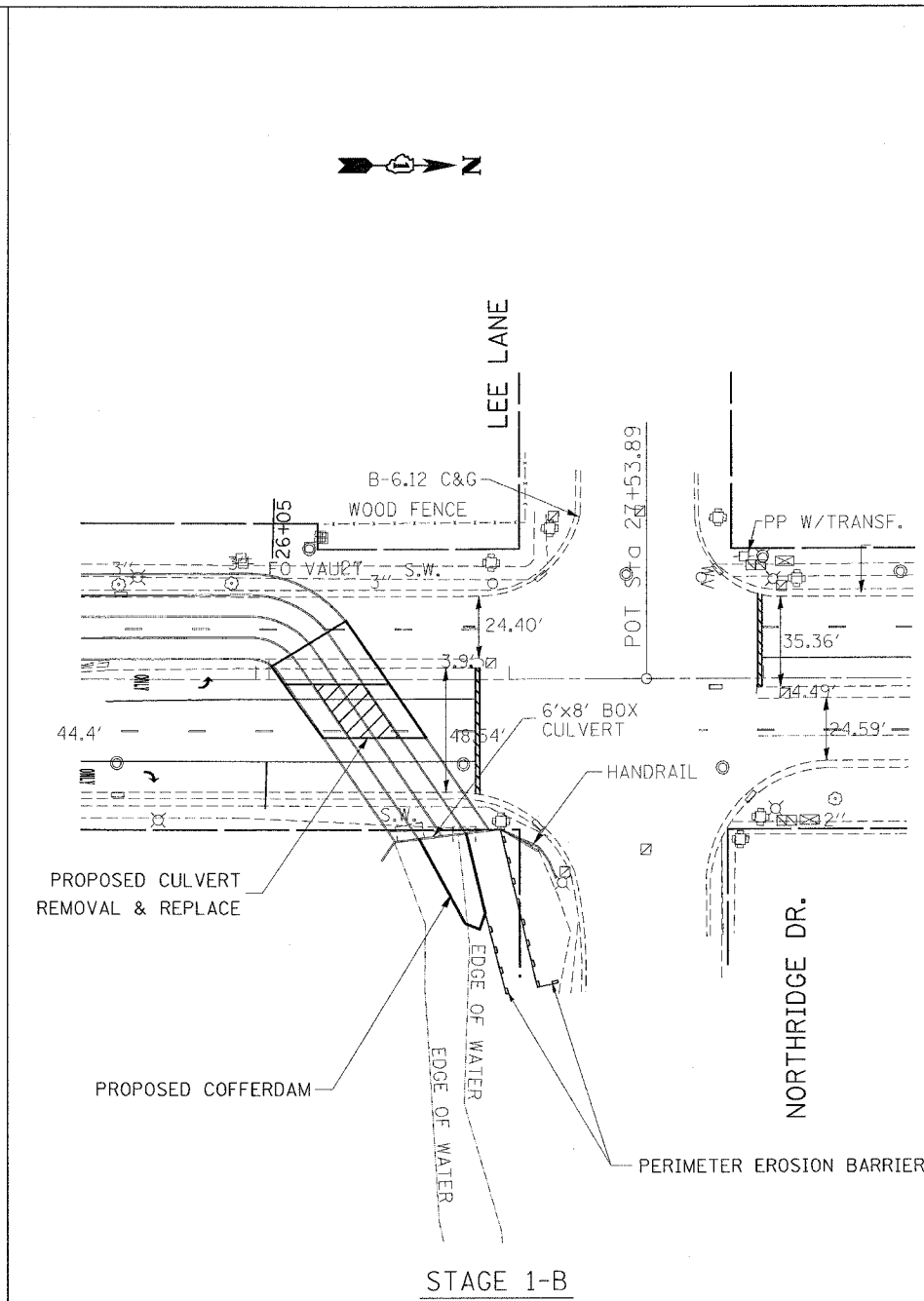


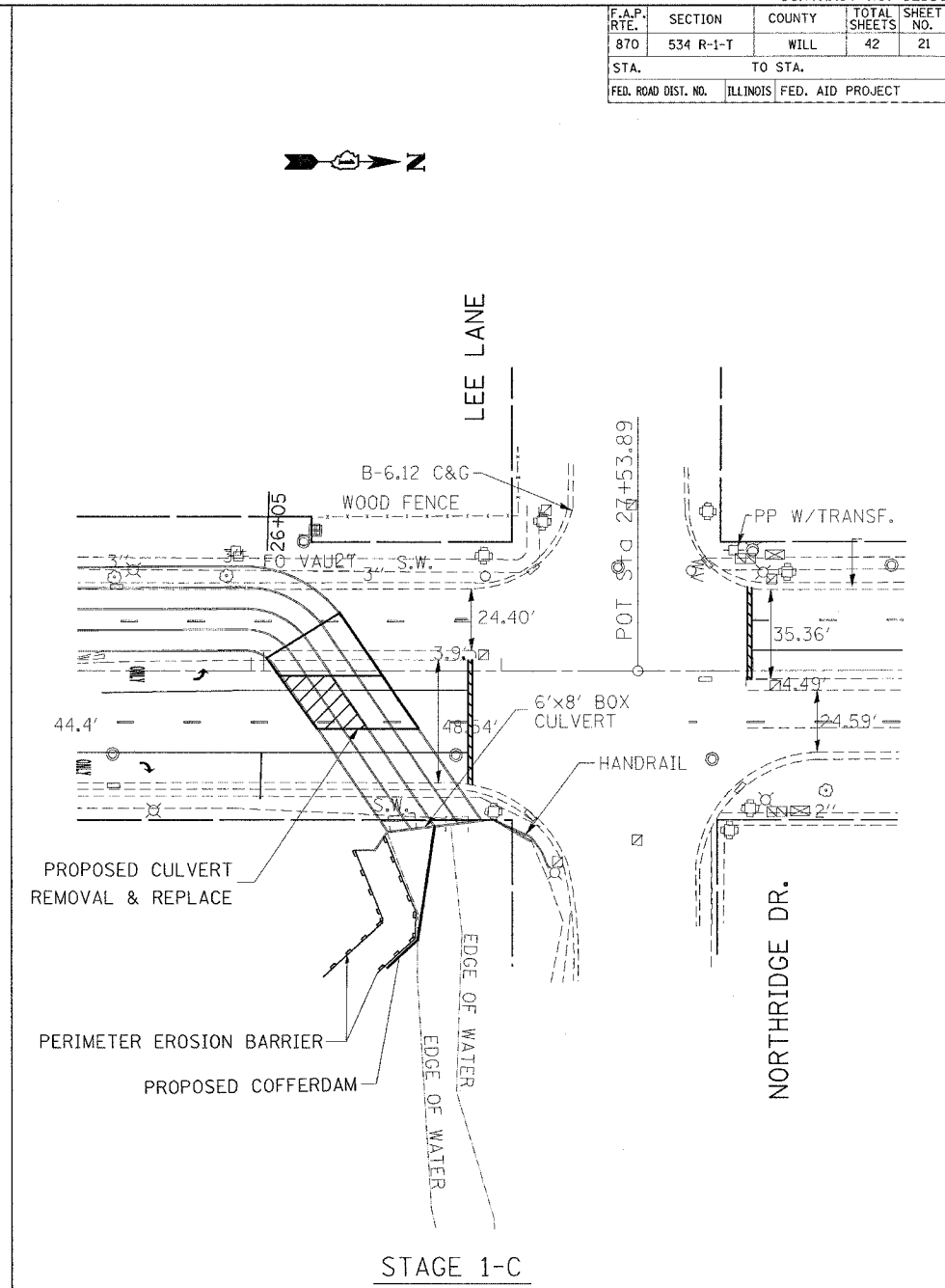
F.A.P. RTE.	SECTION	COUNTY	TOTAL SHEETS	SHEET NO.
870	534 R-1-T	WILL	42	21
STA.		TO STA.		
FED. ROAD DIST. NO.	ILLINOIS	FED. AID PROJECT		



STAGE 1-A



STAGE 1-B



STAGE 1-C

NOTES: EACH STAGE (STAGE 1 & STAGE 2) IS DIVIDED INTO THREE SUB-STAGES

THE CONTRACTOR SHALL INSTALL A COFFERDAM AT DIFFERENT LOACTIONS AS SPECIFIED IN THE PLAN FOR EACH STAGE IN ORDER TO KEEP WATER OUT FOR CONSTRUCTION ACTIVITIES AT THE CORRESPONDING AREA IN THE CULVERT.

THE CONTRACTOR SHALL INSTALL SILT FENCE IN THE CREEK AT THE FRONT OF THE WEST END OF THE CULVERT TO PREVENT MIGRATION OF ANY POSSIBLE DEBRIS AND SEDIMENTS INTO THE CREEK FROM ANY CONSTRUCTION OPERATION UPSTREAM

PERIMETER EROSION BARRIER SHALL BE PLACED WHERE AS INDICATED AND/OR DIRECTED BY THE ENGINEER

REVISIONS	
NAME	DATE

ILLINOIS DEPARTMENT OF TRANSPORTATION

ILLINOIS ROUTE 53
OVER LILY CACHE CREEK
SUGGESTED EROSION CONTROL
STAGE 1

SCALE: VERT. _____
HORIZ. _____

DATE _____ DRAWN BY _____
CHECKED BY _____

PLOT DATE = 8/31/2007
FILE NAME = c:\pro\mca\515160\design\mca32
PLOT SCALE = 50'-0" = 1" IN.
REFERENCE = #REF#

8/31/2007
c:\pro\mca\515160\design\mca32
byunsh