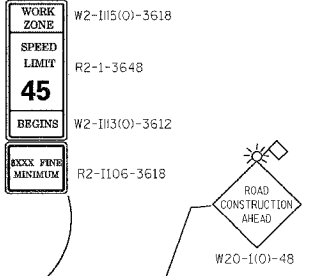
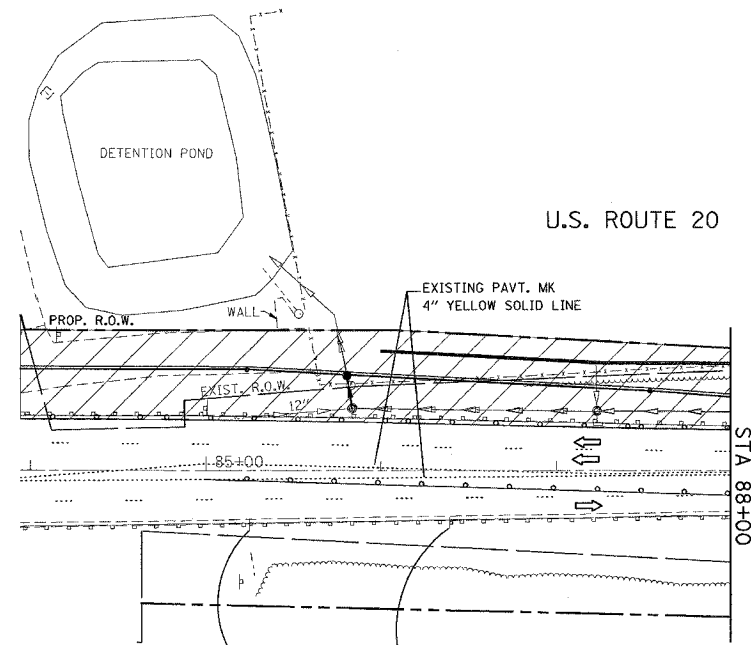
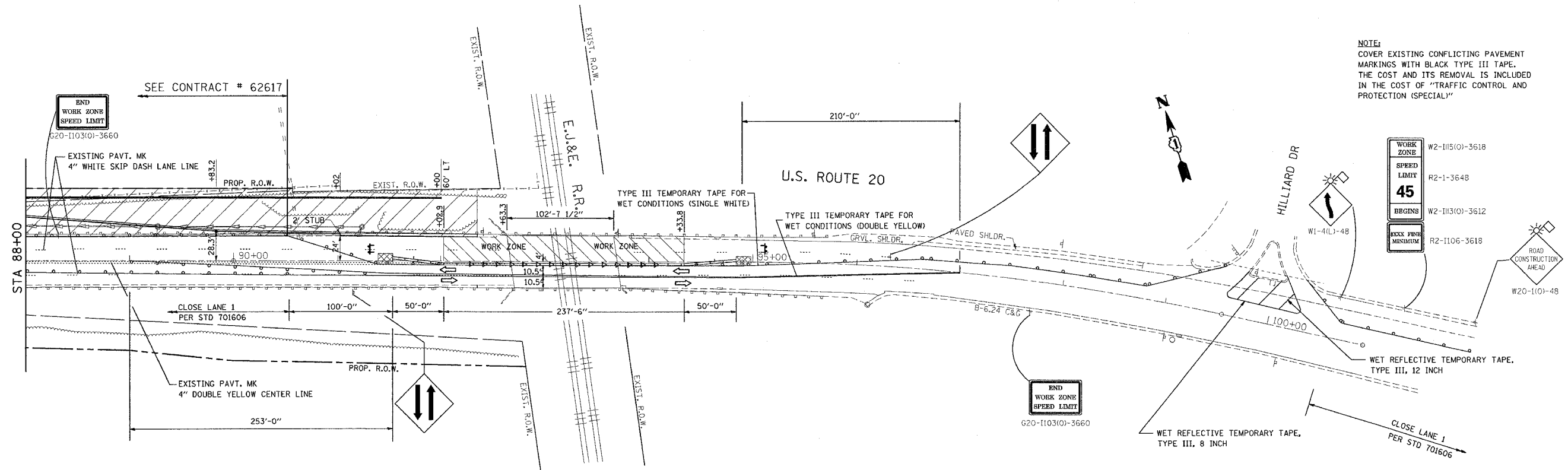


F.A. RTE.	SECTION	COUNTY	TOTAL SHEETS	SHEET NO.
345	**	COOK	22	6
STA.		TO STA.		
FED. ROAD DIST. NO.		ILLINOIS FED. AID PROJECT		
** (7-YV-1&8R-1) WRS&7-YV-1-BR				

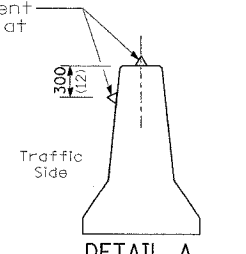
NOTE:
COVER EXISTING CONFLICTING PAVEMENT MARKINGS WITH BLACK TYPE III TAPE. THE COST AND ITS REMOVAL IS INCLUDED IN THE COST OF "TRAFFIC CONTROL AND PROTECTION (SPECIAL)"



LEGEND

- ⊥ Sign
- ◁ Type C Monodirectional reflector
- ▣ Impact attenuators
- ⊥ Type III Barricade w/steady burn lights
- Drums with steady burn monodirectional light
- 50' C-C TANGENTS
- 25' C-C LANE SHIFTS & TAPERS
- 10' C-C RADII (TYP)

Type C monodirectional reflectors on tangent portion of barrier at 15 m (50') cts.



DETAIL A
(BARRIER WALL REFLECTORS)

REVISIONS	
NAME	DATE

ILLINOIS DEPARTMENT OF TRANSPORTATION

**STAGE I CONSTRUCTION
U.S. RTE. 20 @
OVER EJ&E RR**

SCALE: VERT. _____
HORIZ. _____
DATE _____

DRAWN BY _____
CHECKED BY _____

PLOT DATE = 8/21/2007
 FILE NAME = c:\projects\62618\113783\design\stage1.dgn
 PLOT SCALE = 50,00000 / 1 IN.
 USER NAME = abbaeva