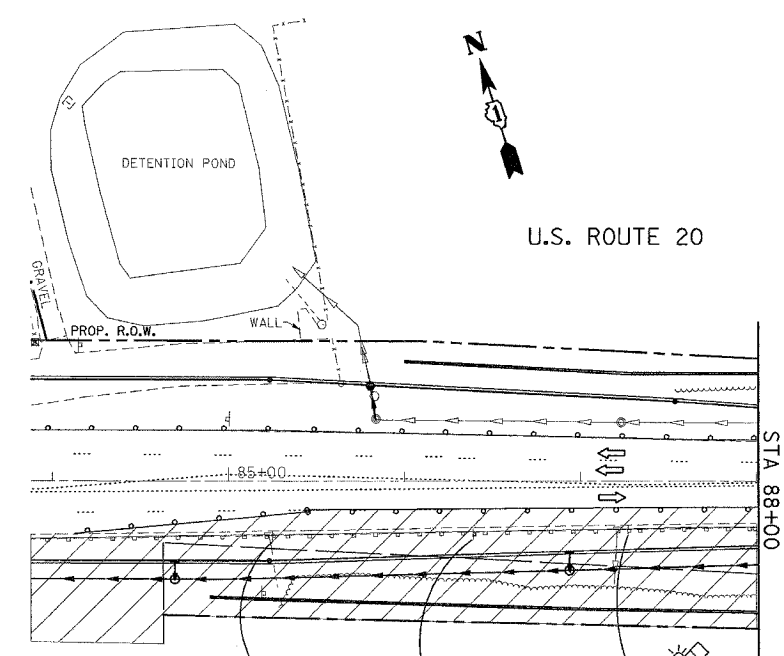
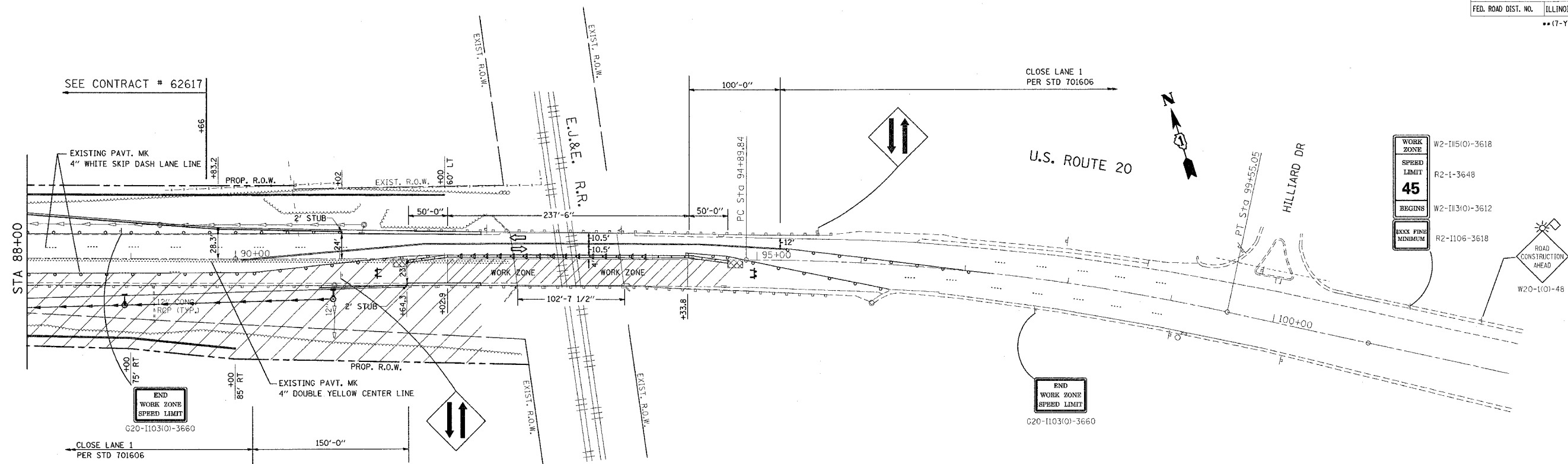


F.A. RTE.	SECTION	COUNTY	TOTAL SHEETS	SHEET NO.
345	**	COOK	22	7
STA.		TO STA.		
FED. ROAD DIST. NO.		ILLINOIS FED. AID PROJECT		
** (7-YV-1&BR-1) WRS&7-YV-1-BR				



WORK ZONE	W2-115(0)-3618
SPEED LIMIT	R2-1-3648
BEGINS	W2-113(0)-3612
EXCC FINE MINIMUM	R2-1106-3618

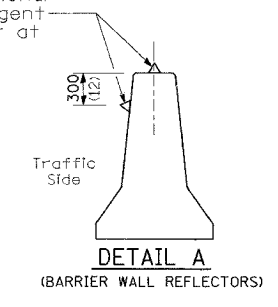


END WORK ZONE SPEED LIMIT
G20-1103(0)-3660

LEGEND

- ⊥ Sign
- ◁ Type C Monodirectional reflector
- ▨ Impact attenuators
- ⊥ Type III Barricade w/steady burn lights
- Drums with steady burn monodirectional light
- 50' C-C TANGENTS
- 25' C-C LANE SHIFTS & TAPERS
- 10' C-C RADII (TYP)

Type C monodirectional reflectors on tangent portion of barrier at 15 m (50') cts.



REVISIONS	
NAME	DATE

ILLINOIS DEPARTMENT OF TRANSPORTATION

**STAGE II CONSTRUCTION
U.S. RTE. 20 @
OVER EJ&E RR**

SCALE: VERT.
DATE: HORIZ.

DRAWN BY
CHECKED BY

DATE: 01/11/2007
FILE: \\s1113783\design\stage.dgn
PLOT SCALE: 50.0000 "/>