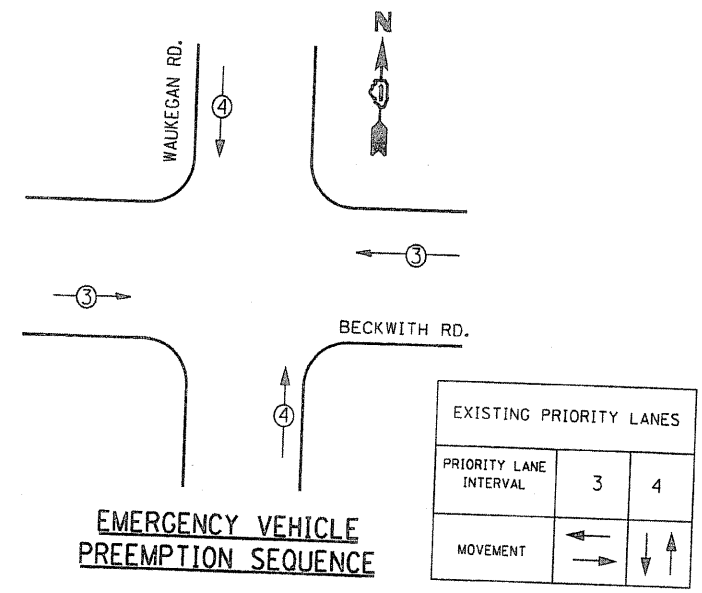
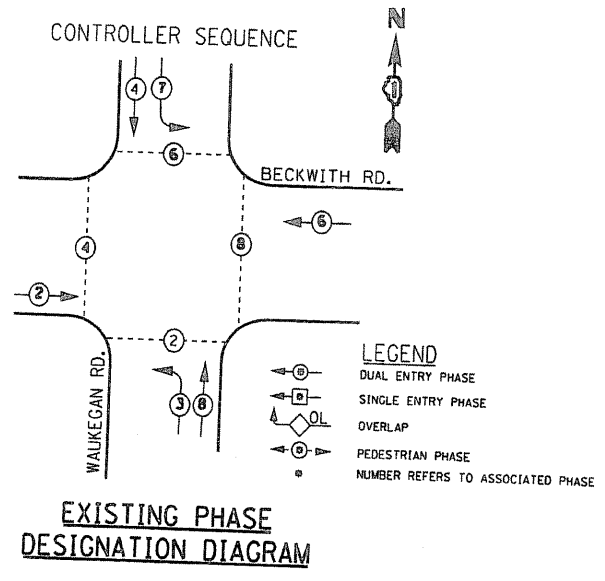
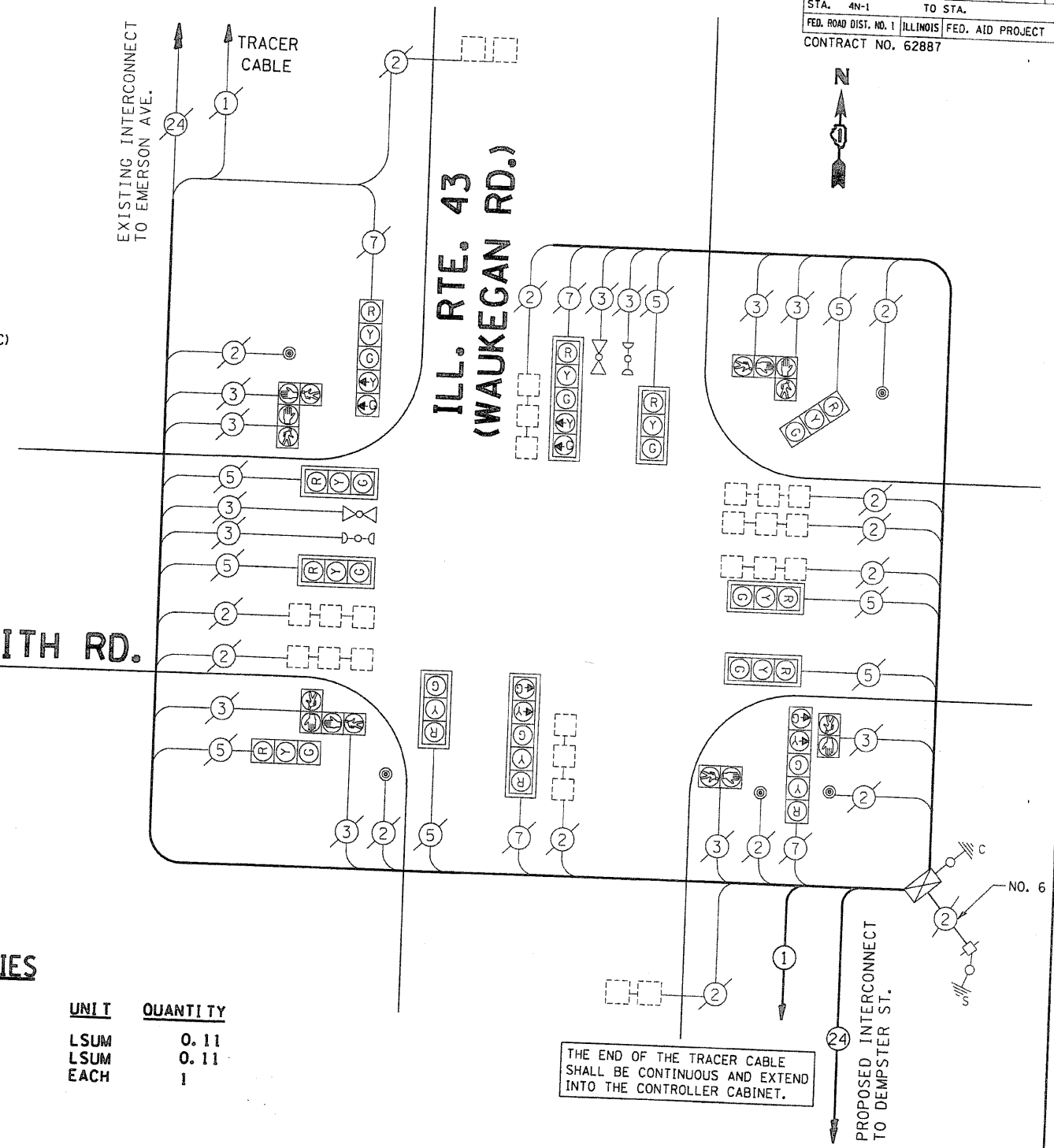


CABLE PLAN LEGEND

- EXISTING**
- 8" (200mm) TRAFFIC SIGNAL SECTION
 - 12" (300mm) TRAFFIC SIGNAL SECTION
 - 12" (300mm) PEDESTRIAN SIGNAL SECTION
 - 12" (300mm) PEDESTRIAN SIGNAL SECTION
 - CONTROLLER CABINET
 - SERVICE INSTALLATION
 - TELEPHONE CONNECTION
 - MAGNETIC DETECTOR
 - EMERGENCY VEHICLE LIGHT DETECTOR
 - CONFIRMATION BEACON
 - PUSHBUTTON DETECTOR
 - VEHICLE DETECTOR, INDUCTION LOOP
- PROPOSED**
- SIGNAL FACE WITH BACKPLATE. "P" INDICATES PROGRAMMED HEAD
 - RAILROAD CONTROL CABINET
 - ILLUMINATED SIGN "NO LEFT TURN"
 - ILLUMINATED SIGN "NO RIGHT TURN"
 - GROUND ROD AT HANDHOLE(H), DOUBLE HANDHOLE(H), OR CONTROLLER(C)
 - GROUND ROD AT POST (P) OR MAST ARM POLE (MA)
 - GROUND ROD AT ELECTRIC SERVICE INSTALLATION
 - GROUND CABLE IN CONDUIT NO. 6 SOLID COPPER (GREEN)
 - FIBER OPTIC CABLE IN CONDUIT, NO. 62.5/125, MM12F SM12F
- NOTES:**
- ② DENOTES NUMBER OF CONDUCTORS. ALL CABLE NO. 14 EXCEPT AS INDICATED. ALL LOOP DETECTOR CABLE TO BE SHIELDED.



BECKWITH RD.



SCHEDULE OF QUANTITIES

ITEM	UNIT	QUANTITY
TRAFFIC CONTROL AND PROTECTION, STANDARD 701701	LSUM	0.11
TRAFFIC CONTROL AND PROTECTION, STANDARD 701801	LSUM	0.11
MAINTENANCE OF EXISTING TRAFFIC SIGNAL INSTALLATION	EACH	1

I.D.O.T. TRAFFIC SIGNAL INSTALLATION ELECTRICAL SERVICE REQUIREMENTS					TOTAL WATTAGE
TYPE	NO. LAMPS	WATTAGE (INCAN.)	WATTAGE (LED)	% OPERATION	
SIGNAL (RED)	12	135	17	0.50	102.00
(YELLOW)	12	135	25	0.25	75.00
(GREEN)	12	135	15	0.25	45.00
ARROW	8	135	12	0.10	9.60
PED. SIGNAL	8	90	25	1.00	200.00
CONTROLLER	1	100	100	1.00	100.00
ILLUM. SIGN		84		0.05	
FLASHER				0.50	
TOTAL =					531.60

ENERGY COSTS TO: ILLINOIS DEPARTMENT OF TRANSPORTATION
201 WEST CENTER COURT
SCHALMUR, ILLINOIS 60196-1096
CONTACT: LARRY D. SHANK
PHONE: (847) 291-3214
COMPANY: COM. EDISON

FOUNDATION (DEPTH)	FT. (m)	CABLE SLACK	FT. (m)	VERTICAL	FT. (m)
TYPE A - POST	4 (1.2)	HANDHOLE	6.5 (2.0)	ALL FOUNDATIONS	3.5 (1.0)
D - CONTROLLER	4 (1.2)	DOUBLE HANDHOLE	13 (4.0)	MAST ARM (L) POLE	20'±L-2"
E - M. ARM POLE		SIGNAL POST	2 (0.6)	BRACKET MOUNTED	13 (4.0)
24" (600mm)	10 (3.0)	CONTROLLER CAB.	1 (0.3)	PED. PUSHBUTTON	4 (1.2)
30" (750mm)	15 (4.6)	FIBER OPTIC	13 (4.0)	ELECTRIC SERVICE	13.5 (4.1)
36" (900mm)	15 (4.6)	ELECTRIC SERVICE	1 (0.3)	SERVICE TO GROUND	13.5 (4.1)
		GROUND CABLE	1 (0.3)	POST MOUNTED	6 (1.8)

REVISIONS	
NAME	DATE

ILLINOIS DEPARTMENT OF TRANSPORTATION
CABLE PLAN, PHASE DESIGNATION DIAGRAM,
EMERGENCY VEHICLE PREEMPTION SEQUENCE,
AND SCHEDULE OF QUANTITIES
ILL. RTE. 43 (WAUKEGAN RD.)
AT BECKWITH RD.

SCALE: 1"=20'
DATE 8/13/2007

DRAWN BY BCK
DESIGN BY BCK
CHECKED BY DAD