

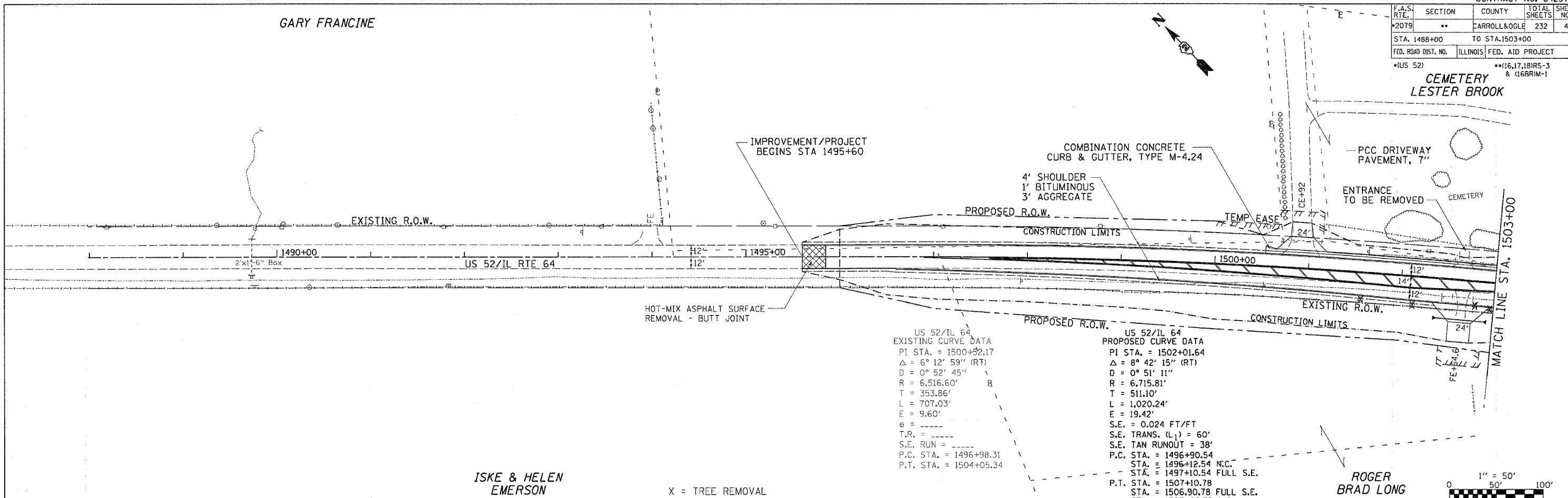
GARY FRANCINE

CONTRACT NO. 64237

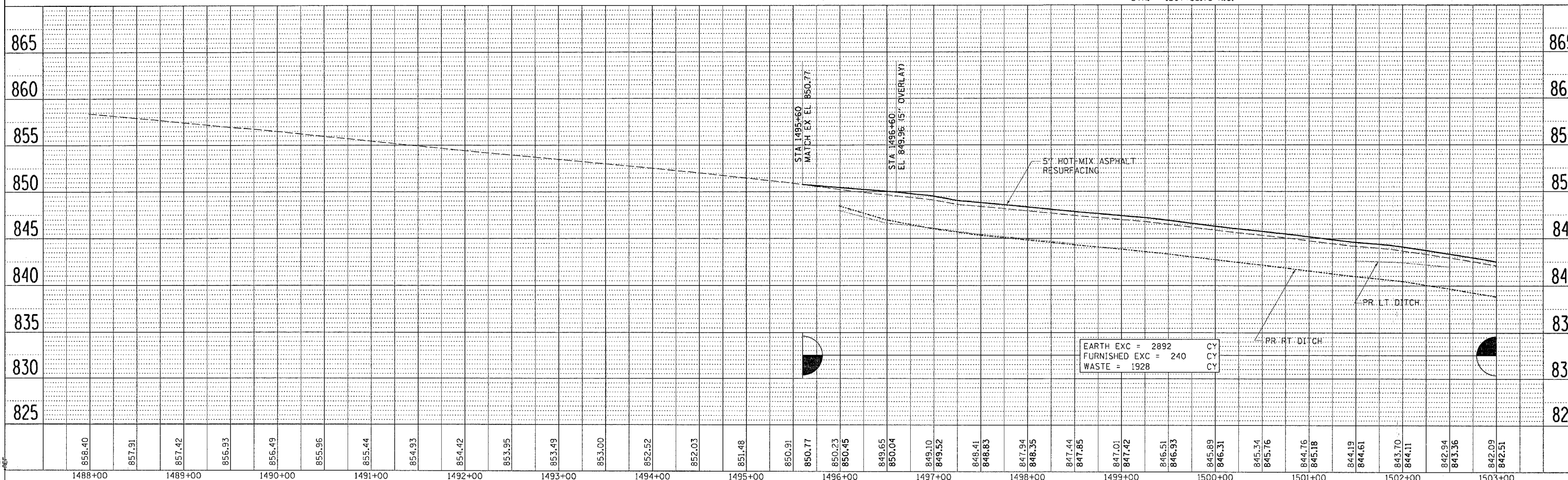
F.A.S. RTE.	SECTION	COUNTY	TOTAL SHEETS	SHEET NO.
2079	**	CARROLL & OGLE	232	45
STA. 1488+00		TO STA. 1503+00		
FED. ROAD DIST. NO.		ILLINOIS FED. AID PROJECT		
*(US 52)		***(16,17,18)RS-3 & (16BRM-1)		

CEMETERY
LESTER BROOK

DATE	BY
DATE	BY
DATE	BY
DATE	BY



DATE	BY
DATE	BY
DATE	BY
DATE	BY



US RTE 52/IL RTE 64
PLAN & PROFILE