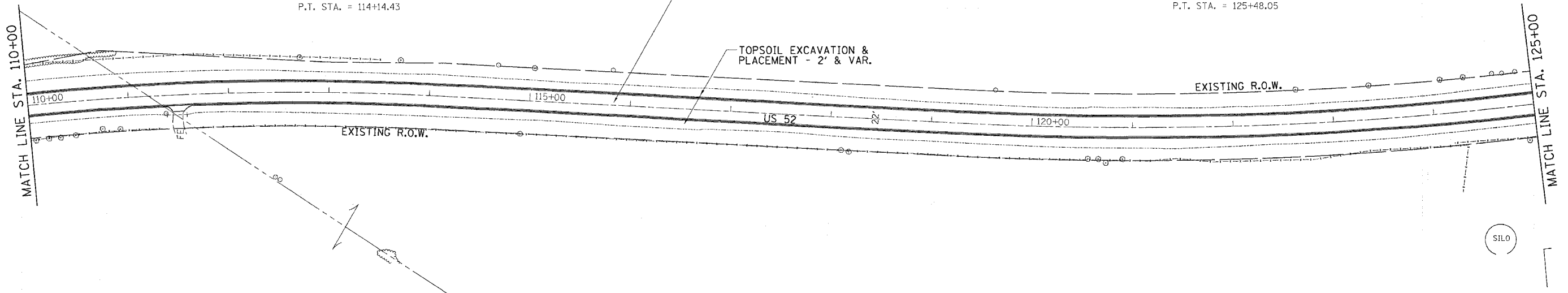
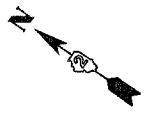


F.A.S. RTE.	SECTION	COUNTY	TOTAL SHEETS	SHEET NO.
2079	**	CARROLL & OGLE	232	51
STA. 110+00		TO STA. 140+00		
FED. ROAD DIST. NO.		ILLINOIS FED. AID PROJECT		
*(US 52)		** (16.17, 18IRS-3 & 16BRM-1)		

JAMES L. MESSER

US 52
 EXISTING CURVE DATA
 PI STA. = 110+76.13
 $\Delta = 13^\circ 30' 48''$ (RT)
 $D = 1^\circ 59' 16''$
 $R = 2,882.21'$
 $T = 341.47'$
 $L = 679.77'$
 $E = 20.16'$
 $e =$ -----
 $T.R. =$ -----
 $S.E. RUN =$ -----
 $P.C. STA. = 107+34.66$
 $P.T. STA. = 114+14.43$

US 52
 EXISTING CURVE DATA
 PI STA. = 122+41.15
 $\Delta = 10^\circ 35' 21''$ (LT)
 $D = 1^\circ 43' 13''$
 $R = 3,330.65'$
 $T = 308.66'$
 $L = 615.56'$
 $E = 14.27'$
 $e =$ -----
 $T.R. =$ -----
 $S.E. RUN =$ -----
 $P.C. STA. = 119+32.49$
 $P.T. STA. = 125+48.05$

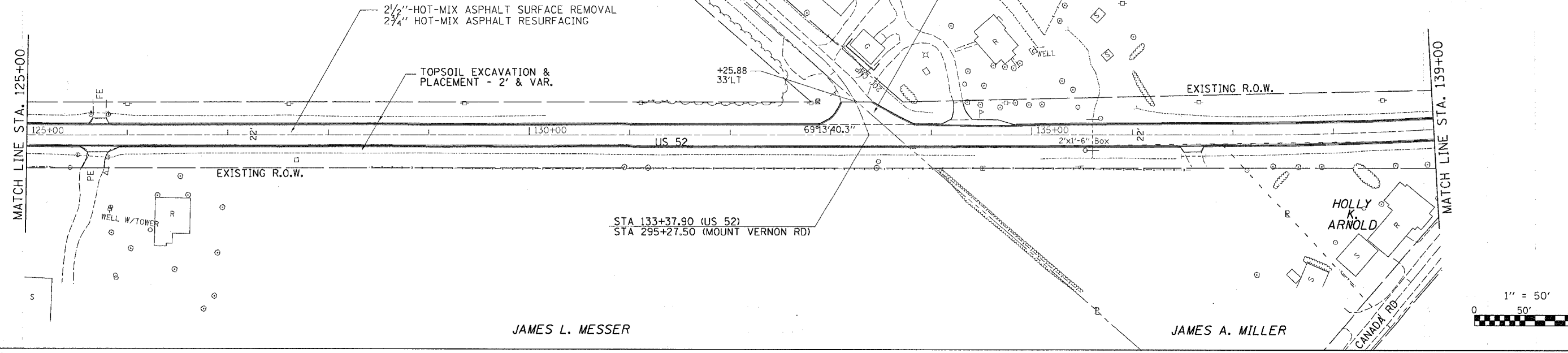
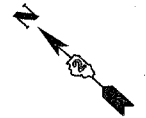


JAMES L. MESSER

JAMES L. MESSER

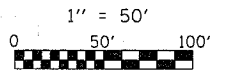
BERNICE MILLER

US 52
 EXISTING CURVE DATA
 PI STA. = 140+09.17
 $\Delta = 9^\circ 55' 25''$ (LT)
 $D = 1^\circ 36' 02''$
 $R = 3,579.61'$
 $T = 310.77'$
 $L = 619.99'$
 $E = 13.46'$
 $e =$ -----
 $T.R. =$ -----
 $S.E. RUN =$ -----
 $P.C. STA. = 136+98.40$
 $P.T. STA. = 143+18.38$



JAMES L. MESSER

JAMES A. MILLER



PLOT DATE = Thu Mar 08 08:32:46 2007
 FILE NAME = c:\projects\120265\us0265p1.plt.dgn
 USER NAME = jmesser
 USER = jmesser