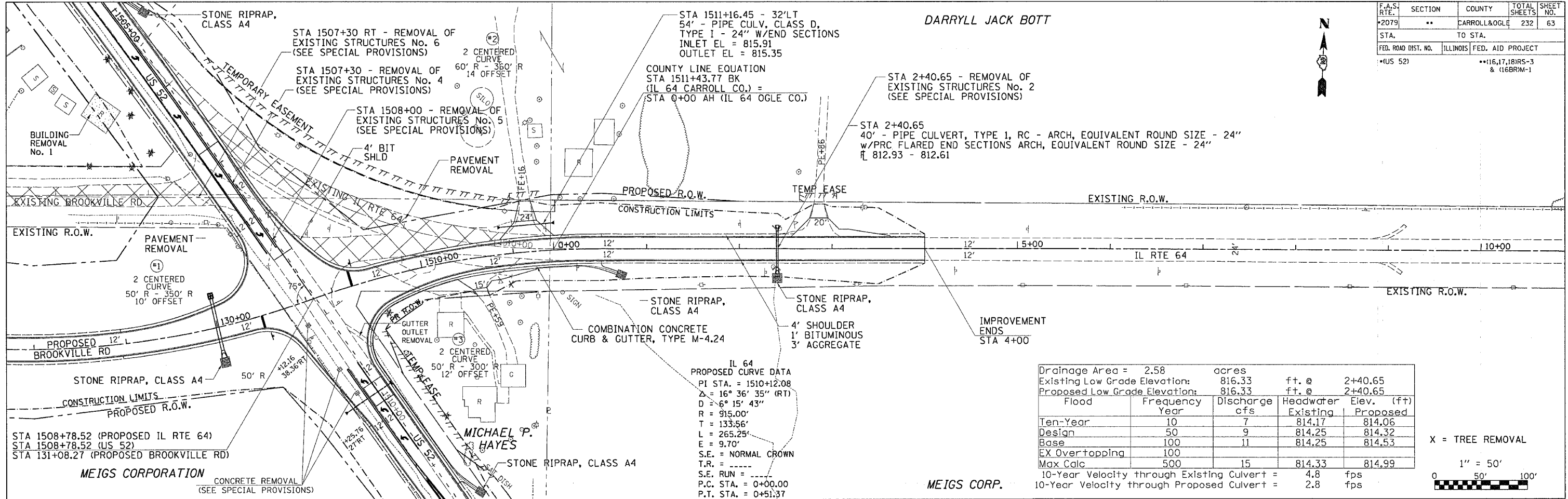


F.A.S. RTE.	SECTION	COUNTY	TOTAL SHEETS	SHEET NO.
2079	**	CARROLL & OGLE	232	63
STA.		TO STA.		
FED. ROAD DIST. NO.		ILLINOIS FED. AID PROJECT		
*US 52		**16,17,18RS-3 & 16BRM-1		



DARRYL JACK BOTT



IL 64  
PROPOSED CURVE DATA  
PI STA. = 1510+12.08  
Z = 16° 36' 35" (RT)  
D = 6° 15' 43"  
R = 915.00'  
T = 133.56'  
L = 265.25'  
E = 9.70'  
S.E. = NORMAL CROWN  
T.R. = -----  
S.E. RUN = -----  
P.C. STA. = 0+00.00  
P.T. STA. = 0+51.37

Drainage Area =	2.58	acres		
Existing Low Grade Elevation:	816.33	ft. @	2+40.65	
Proposed Low Grade Elevation:	816.33	ft. @	2+40.65	
Flood	Frequency	Discharge	Headwater	Elev. (ft)
	Year	cfs	Existing	Proposed
Ten-Year	10	7	814.17	814.06
Design	50	9	814.25	814.32
Base	100	11	814.25	814.53
EX Overtopping	100			
Max Calc	500	15	814.33	814.99
10-Year Velocity through Existing Culvert =		4.8	fps	
10-Year Velocity through Proposed Culvert =		2.8	fps	

X = TREE REMOVAL  
1" = 50'  
0 50' 100'

PLAN	NO.	DATE
BY		
DATE		

PROFILE	NO.	DATE
BY		
DATE		

