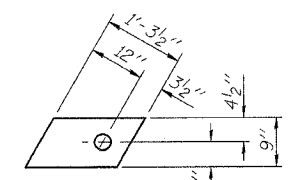
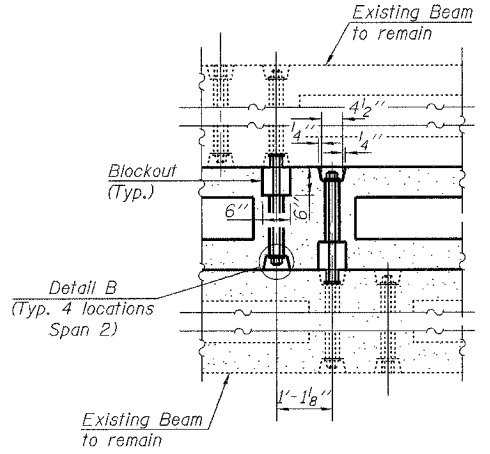
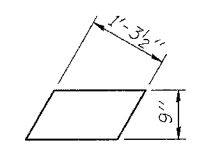


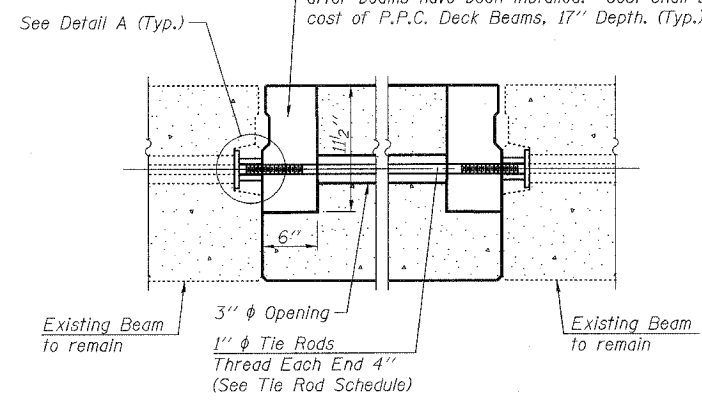
FABRIC BEARING PAD (FIXED)
(14 Required)



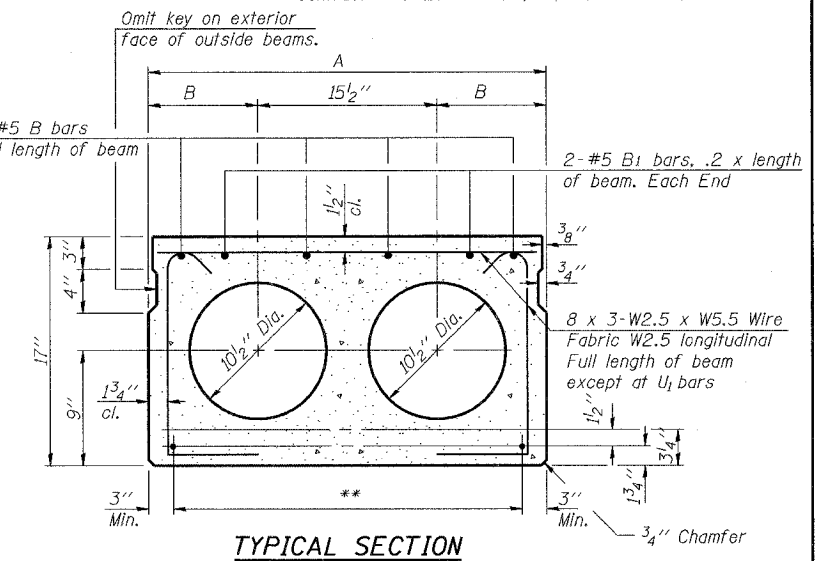
FABRIC BEARING PAD (EXPANSION)
(2 Required)



TRANSVERSE TIE ASSEMBLY



SECTION A-A

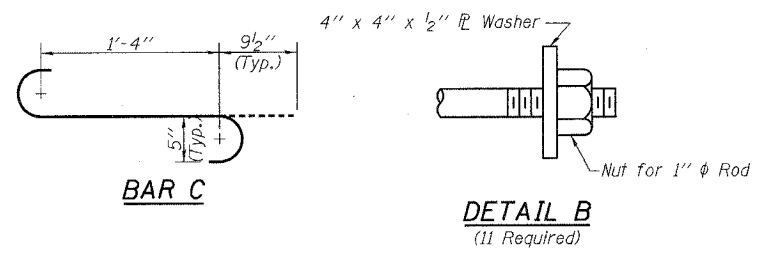


TYPICAL SECTION

- ** Transverse Strand Placement Guidelines**
1. Place strands symmetrically about centerline of beam.
 2. The minimum distance from center to center of strands in all directions shall be 2".
 3. The minimum clearance from strand to dowel hole shall be 1/2".
 4. The minimum clearance from strand to void shall be 1 1/2".

DIMENSION TABLE

BEAM	LOCATION	LENGTH
6	A	35"
	B	9'-3 1/4"
	C	11 1/2"
	D	1'-0 3/4"
	E	2'-4"
	E'	2'-6 3/4"
	F	16'-0"
12, 15 & 21	F'	16'-10 1/2"
	G	1'-7 3/8"
	A	35"
	B	9'-3 1/4"
	C	11 1/2"
	D	1'-0 3/4"
	E	1'-6"
E'	2'-6 3/4"	
F	16'-10"	
F'	16'-10 1/2"	
G	9"	

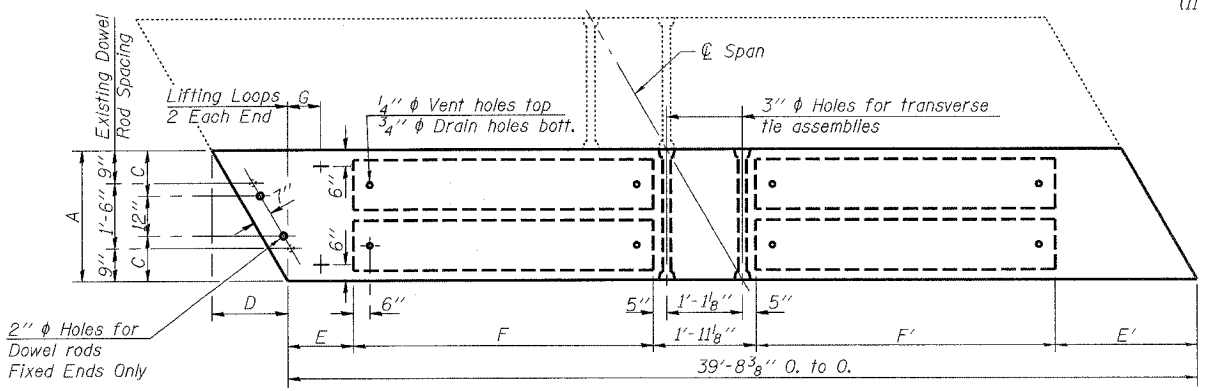


BAR C

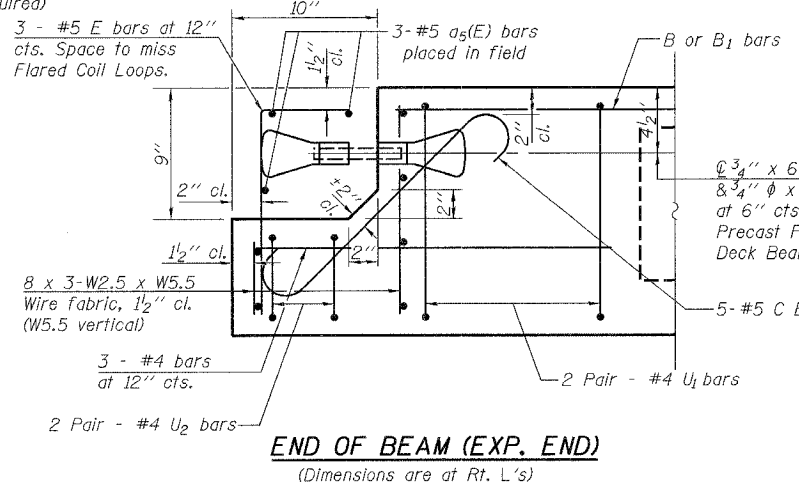
DETAIL B
(11 Required)

PLATE A
(11 Required)

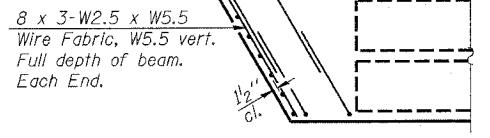
DETAIL A
(11 Required)



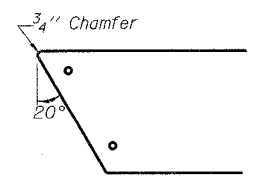
GENERAL BEAM PLAN



END OF BEAM (EXP. END)
(Dimensions are at Rt. L's)

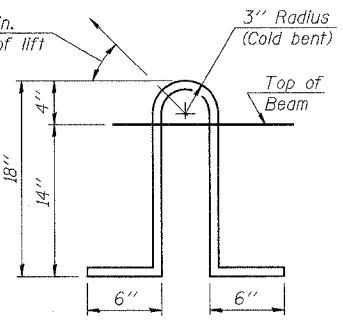


END PLAN



AT FIXED END

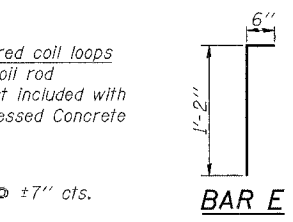
Note: Transverse tie rods are not required at block-out end of beams.



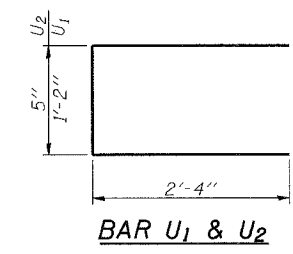
LIFTING LOOP DETAIL

NOTES

Prestressing steel shall be uncoated high strength, low relaxation 7-wire strand, Grade 270. The nominal diameter shall be 1/2" and the nominal cross-sectional area shall be 0.153 sq. in. Lifting loops shall be 2 - 1/2" phi-270 ksi strands, as shown. The 1" phi rods in the transverse tie assembly shall be tightened to a snug fit and the threads set. Pockets that receive transverse tie bar on outside shall be filled with grout after transverse tie assembly is in place. Non prestressing steel shall conform to ASTM A 706 (1L MOD), Grade 60. The bearing seat surfaces shall be adjusted by shimming to assure firm and even bearing. Two 1/8" fabric adjusting shims of the dimensions of the Exterior Bearing Pad shall be provided for each bearing. Keyway surfaces shall be cleaned to remove form oil or other bond breaking material prior to shipment of the beams. Cleaning shall be done by sandblasting the keyway areas between top of the beam and the bottom edge of the key. Corrosion Inhibitor, per Article 1020.05(b)(12) and 1021.06 of the Standard Specifications, shall be used in the concrete for precast prestressed concrete deck beams. Required Release Strength, 1'cl, shall be 4000 p.s.i.



BAR E



BAR U1 & U2

BILL OF MATERIAL

Precast Prestressed Conc. Deck Bms.	Sq. Ft.
17x35	463.1

rjngroup
Excellence through Ownership
200 West Front Street
Wheaton, IL 60187

ILLINOIS DEPARTMENT OF TRANSPORTATION
BEAM DETAILS - BEAMS 6, 12, 15 & 21
U.S. ROUTE 52 OVER ELKHORN CREEK
FAS RTE 2079 - OGLE COUNTY
SECTION (16, 17, 18) RS-3 & (16BR)M-1
STATION 971+50.04
STRUCTURE NO. 071-0070
DATE: 9/18/2007
DRAWN BY: JMT
CHECKED BY: BLB