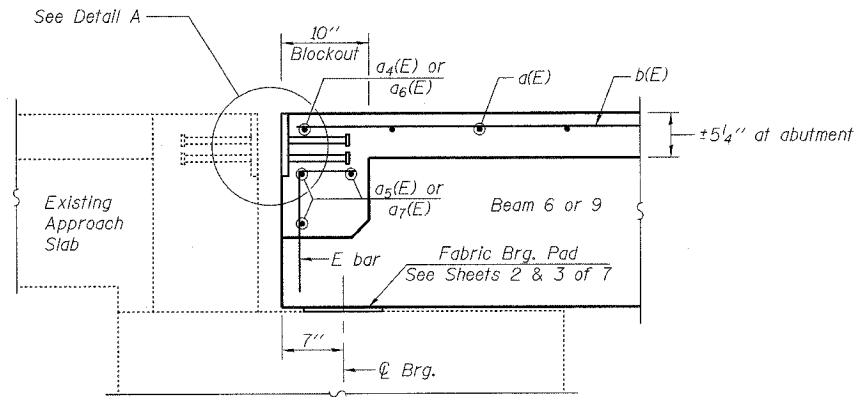
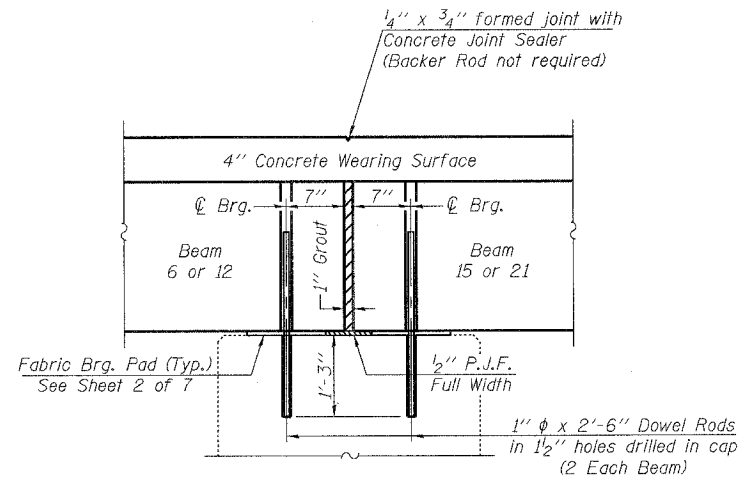


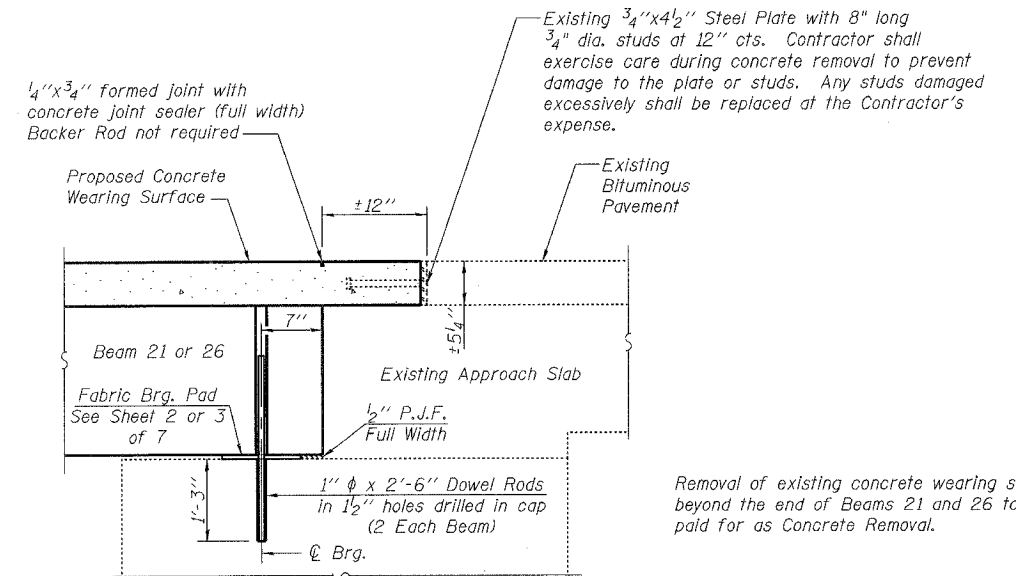
ROUTE NO.	SECTION	ESTIMATE	TOTAL SHEETS	SHEET NO.	SHEET NO. 6
FAS 2079	*	OGLE	232	74	7 SHEETS
FED. ROAD DIST. NO. 7	ILLINOIS	FED. AID PROJECT	Contract # 64237 * (16, 17, 18) RS-3 & (16BR) M-1		



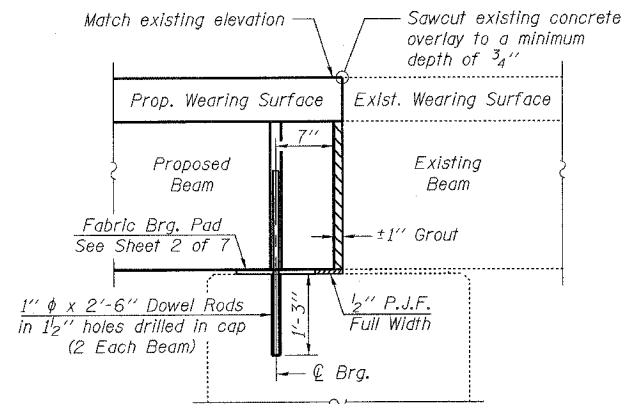
SECTION THRU WEST ABUTMENT
Dimensions at right angles



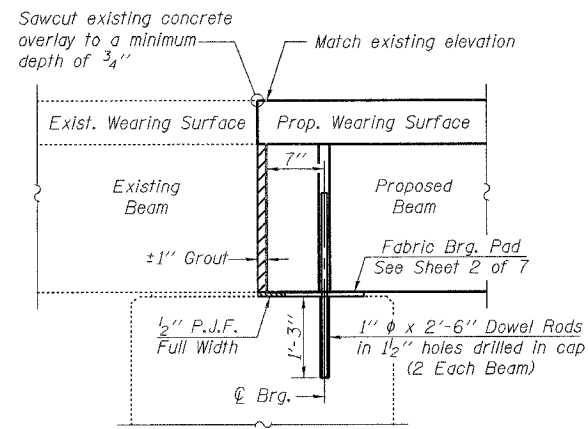
SECTION THRU PIER AT BEAM 6/15 & 12/21
Dimensions at right angles



SECTION THRU EAST ABUTMENT
Dimensions at right angles



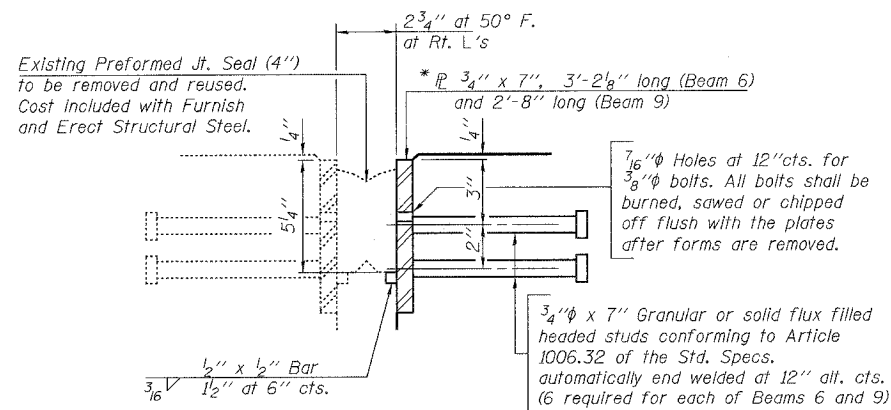
SECTION THRU PIER AT BEAM 9/18 & 15/24
Dimensions at right angles



SECTION THRU PIER AT BEAM 3/12 & 17/26
Dimensions at right angles

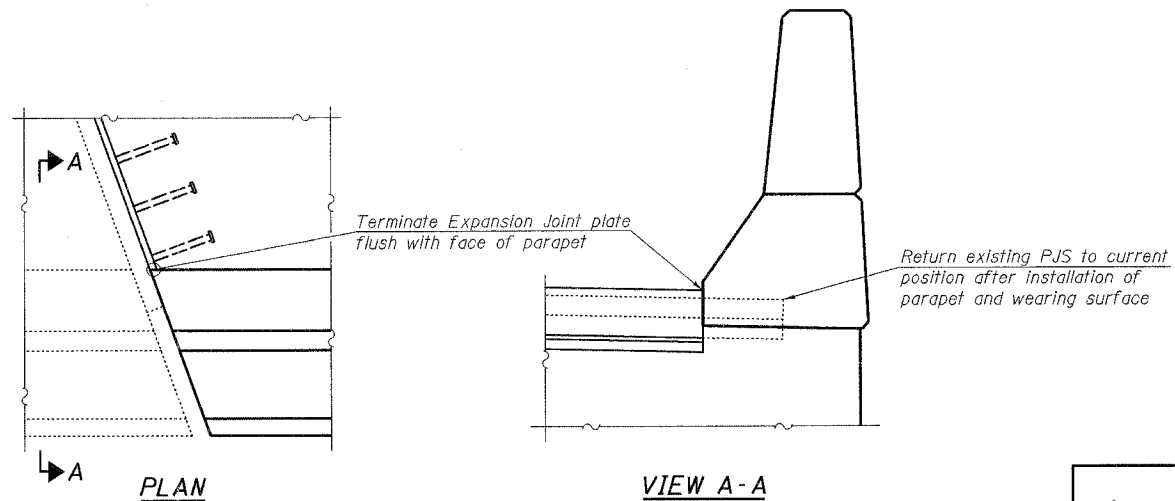
Existing dowel rods are to be burned off, ground flush, and sealed with epoxy prior to placement of new beams. Cost included in Removal of Existing PPC Deck Beams. After beams have been erected holes shall be drilled into cap and dowel rods placed. Dowel rods shall be filled with non-shrink grout to top of beam and allowed to cure a minimum of 24 hours prior to grouting the shear keys.

Removal of existing concrete wearing surface beyond the end of Beams 21 and 26 to be paid for as Concrete Removal.



DETAIL A

*Cut the existing plate at the joints between existing beams and beams to be removed. Seal space between existing and new plates with Silicone Sealant suitable for Structural Steel. Cost included with Furnishing and Erecting Structural Steel.



EXPANSION JOINT DETAIL AT PARAPET

BILL OF MATERIAL

ITEM	UNIT	TOTAL
Furnishing and Erecting Structural Steel	Pound	116

rjngroup
Excellence through Ownership

200 West Front Street
Wheaton, IL 60187

ILLINOIS DEPARTMENT OF TRANSPORTATION

SECTIONS AND DETAILS
U.S. ROUTE 52 OVER ELKHORN CREEK
FAS RTE 2079 - OGLE COUNTY
SECTION (16, 17, 18) RS-3 & (16BR)M-1
STATION 971+50.04
STRUCTURE NO. 071-0070

DATE: 9/18/2007

DRAWN BY JMT
CHECKED BY BLB