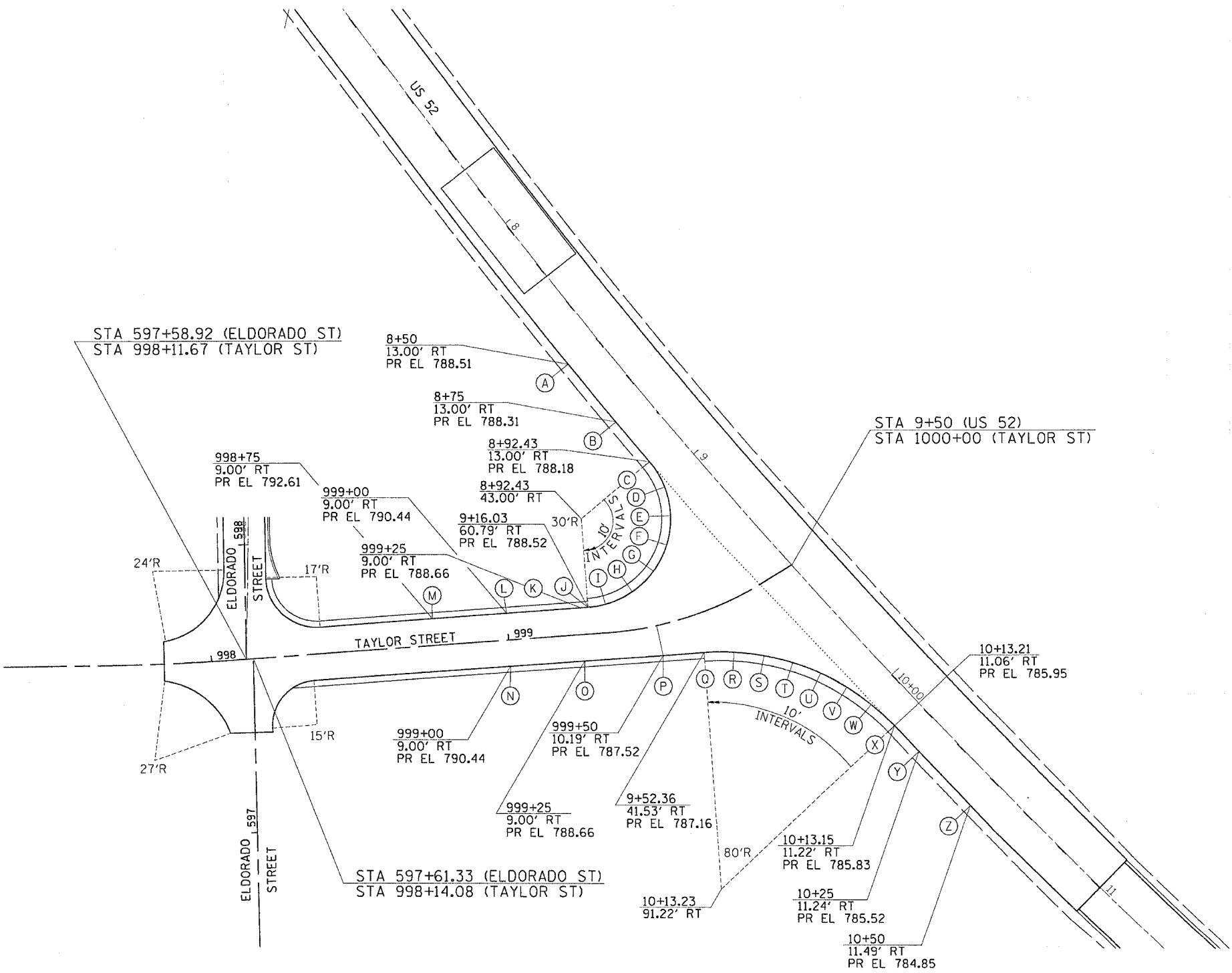


F.A.S. RTE.	SECTION	COUNTY	TOTAL SHEETS	SHEET NO.
2079	**	CARROLL & OGLE	232	83
STA.	TO STA.			
FED. ROAD DIST. NO.	ILLINOIS	FED. AID PROJECT		
•(US 52)	** (16,17,18)RS-3 & (16BRM-1)			

PAVEMENT ELEVATION DETAILS PROPOSED TAYLOR STREET



	STATION US 52	OFFSET US 52	PROPOSED EDGE OF PAVEMENT ELEVATION
A	8+50.00	13.00' RT	788.51
B	8+75.00	13.00' RT	788.31
C	8+92.43	13.00' RT	788.18
D	9+02.18	14.67' RT	788.00
E	9+10.82	19.50' RT	787.50
F	9+17.37	26.93' RT	786.81
G	9+21.12	36.13' RT	788.20
H	9+21.68	46.07' RT	787.68
I	9+19.04	55.65' RT	788.20
J	9+16.03	60.79' RT	788.52
	STATION PROPOSED TAYLOR STREET	OFFSET PROPOSED TAYLOR STREET	PROPOSED EDGE OF PAVEMENT ELEVATION
K	999+25.00	9.00' LT	788.66
L	999+00.00	9.00' LT	790.44
M	998+75.00	9.00' RT	792.61
N	999+00.00	9.00' RT	790.44
O	999+25.00	9.00' RT	788.66
P	999+50.00	10.19' RT	787.52
	STATION US 52	OFFSET US 52	PROPOSED EDGE OF PAVEMENT ELEVATION
Q	9+52.36	41.53' RT	787.16
R	9+58.84	34.02' RT	786.86
S	9+66.38	27.30' RT	786.55
T	9+74.58	21.73' RT	786.42
U	9+83.44	17.27' RT	786.40
V	9+92.82	14.00' RT	786.27
W	10+02.55	11.97' RT	786.08
X	10+13.15	11.22' RT	785.83
Y	10+25.00	11.24' RT	785.52
Z	10+50.00	11.49' RT	784.85

PLOT DATE = Wed Nov 07 15:37:11 2007
 FILE NAME = c:\projects\2079\2079RS-3\2079RS-3.dgn
 USER NAME = scanda

REVISIONS	
NAME	DATE

ILLINOIS DEPARTMENT OF TRANSPORTATION
 FAS ROUTE 2079 (US 52)
 SECTION (16,17,18)RS-3
 CARROLL & OGLE COUNTIES

SCALE: VERT. / HORIZ.
 DATE / DRAWN BY / CHECKED BY