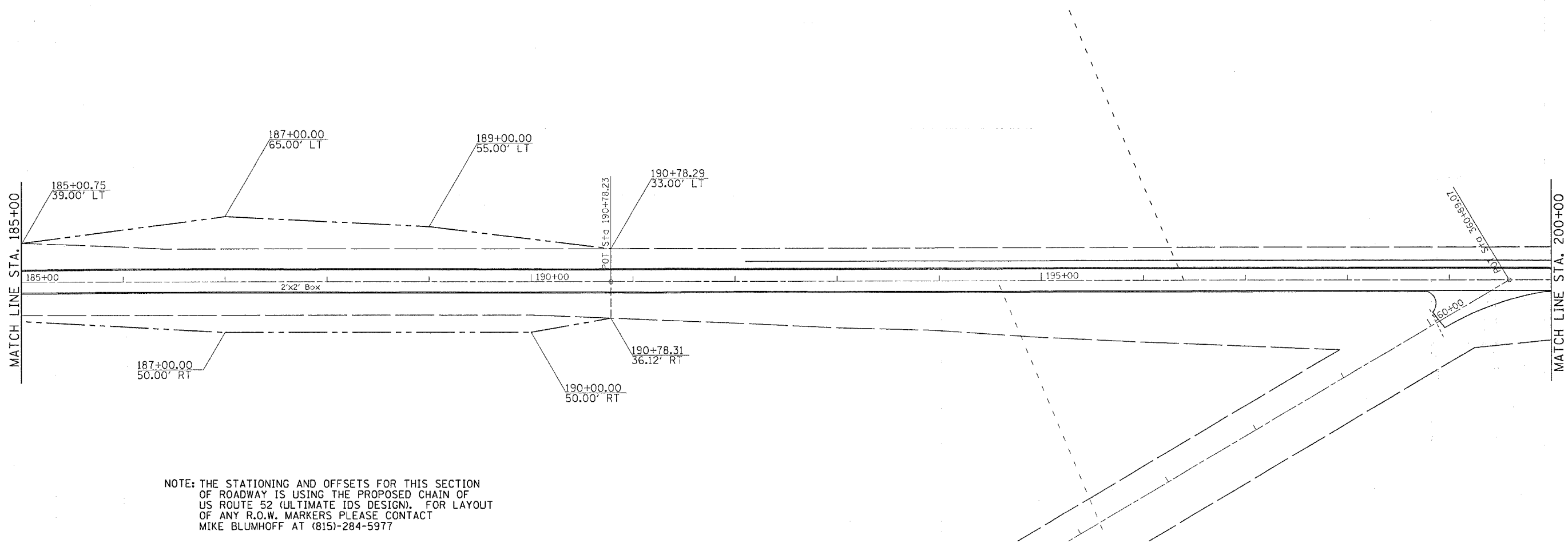


R.O.W. & EASEMENT DETAILS

CONTRACT NO. 64237

F.A.S. RTE.	SECTION	COUNTY	TOTAL SHEETS	SHEET NO.
2079	**	CARROLL & OGLE	232	89
STA.		TO STA.		
FED. ROAD DIST. NO.		ILLINOIS FED. AID PROJECT		
*(US 52)		** (16,17,18)RS-3 & (16BRM-1)		



NOTE: THE STATIONING AND OFFSETS FOR THIS SECTION OF ROADWAY IS USING THE PROPOSED CHAIN OF US ROUTE 52 (ULTIMATE IDS DESIGN). FOR LAYOUT OF ANY R.O.W. MARKERS PLEASE CONTACT MIKE BLUMHOFF AT (815)-284-5977

PLOT DATE = 11/05/07 15:25:58 2007
 FILE NAME = 11/05/07 15:25:58 2007
 PLOT SCALE = 50.0000 / IN.
 USER NAME = dmsdd

REVISIONS	
NAME	DATE

ILLINOIS DEPARTMENT OF TRANSPORTATION
FAS ROUTE 2079 (US 52)
SECTION (16, 17, 18)RS-3
CARROLL & OGLE COUNTIES

SCALE: VERT. / HORIZ. / DATE
 DRAWN BY / CHECKED BY

R.O.W. & EASEMENT DETAILS