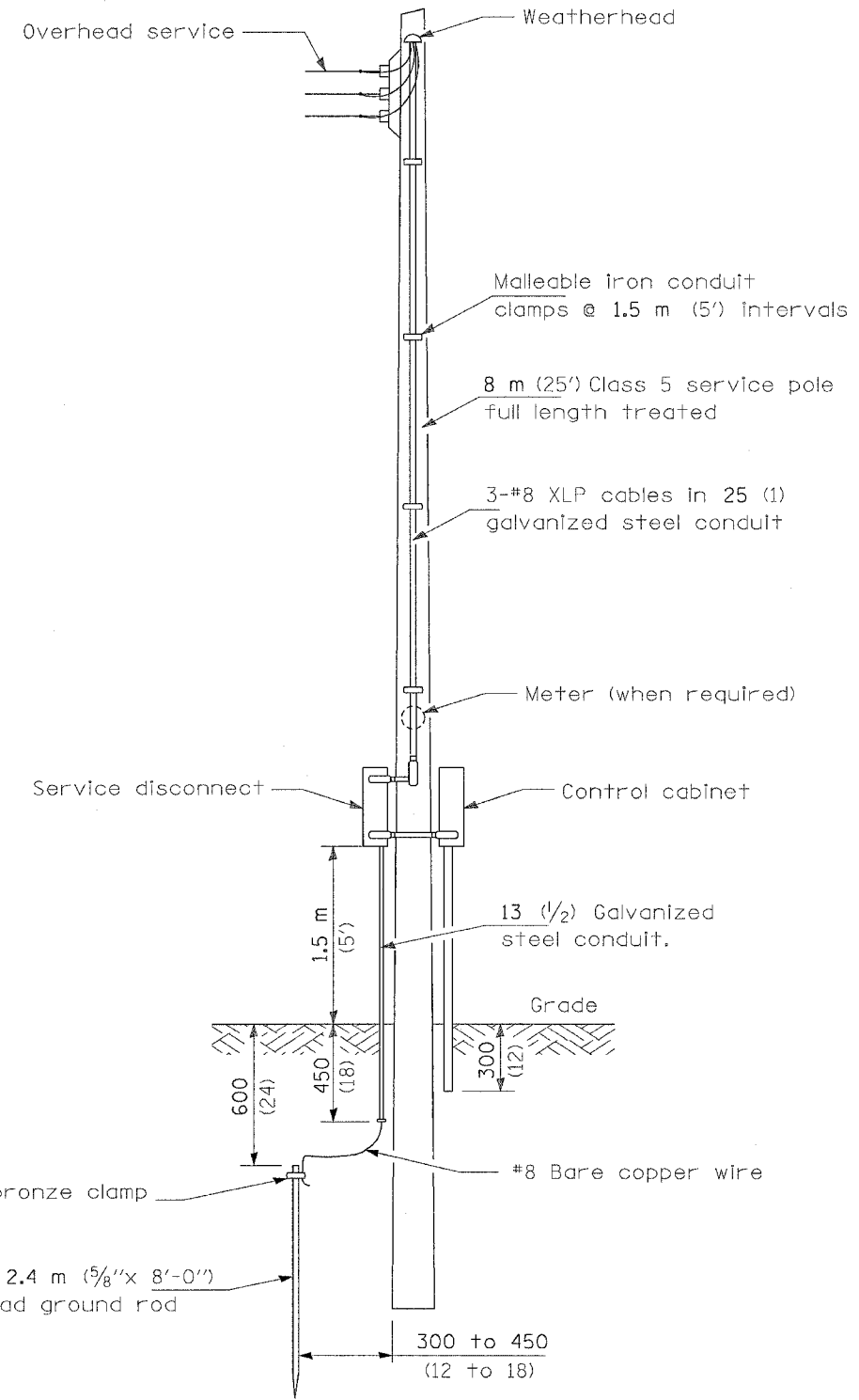
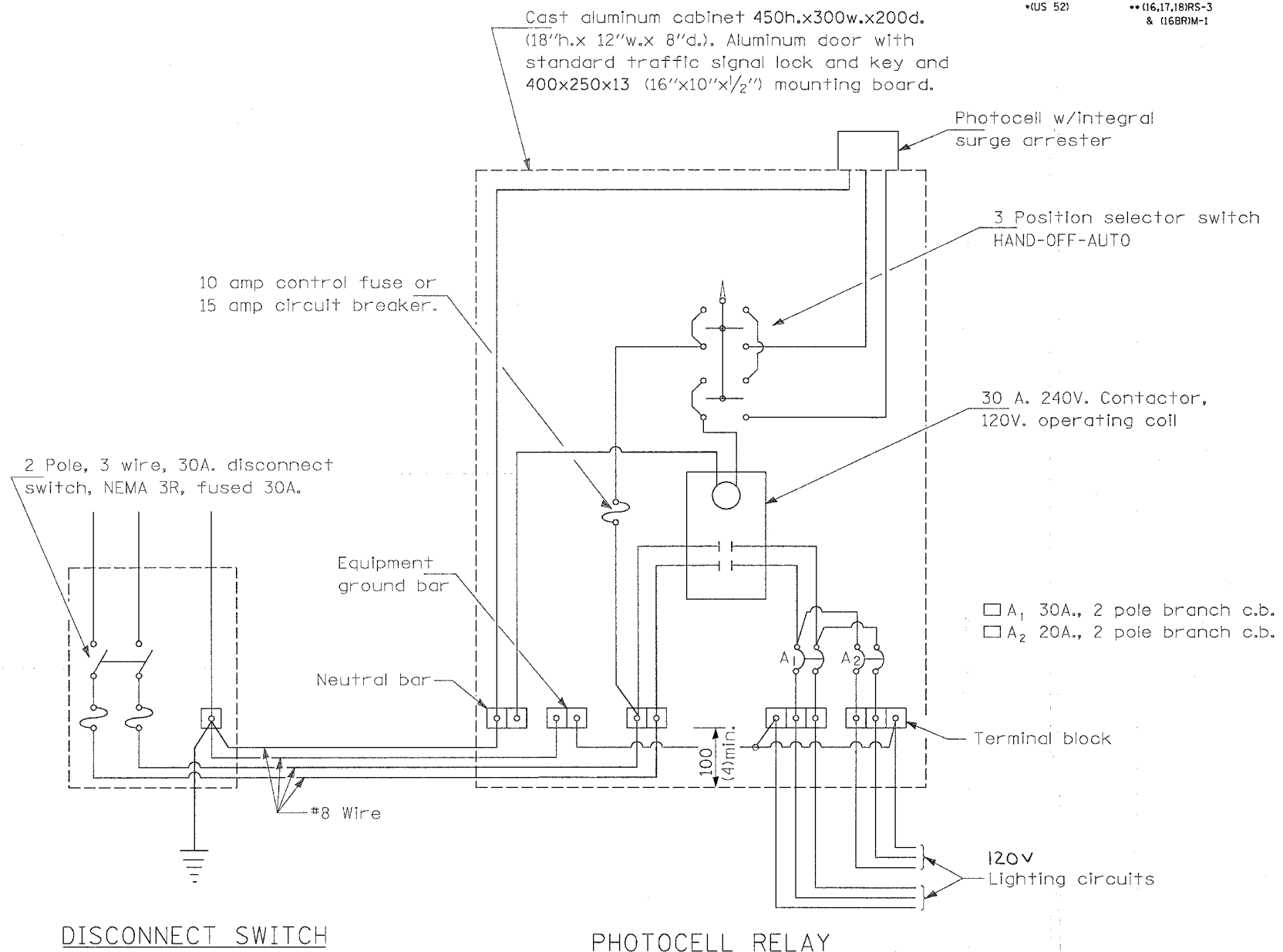


F.A.S. RTE.	SECTION	COUNTY	TOTAL SHEETS	SHEET NO.
*2079	**	CARROLL & OGLE	232	112
STA.		TO STA.		
FED. ROAD DIST. NO.	ILLINOIS FED. AID PROJECT			
*US 52	** (16,17,18)RS-3 & (16BR)M-1			



SERVICE POLE
(OVERHEAD OR UNDERGROUND MAY BE USED)



DISCONNECT SWITCH

PHOTOCELL RELAY

GENERAL NOTES

All equipment shall be U.L. Listed.
All dimensions are in millimeters unless otherwise shown.

PASSED	January 1, 1997
ENGINEER OF POLICY AND PROCEDURES	
APPROVED	January 1, 1997
ENGINEER OF DESIGN AND ENVIRONMENT	

DATE	REVISIONS

CONTROL INSTALLATION
SERVICE POLE MOUNTED
120/240V., 1 PHASE, 3 WIRE SERVICE
LGT003.M32