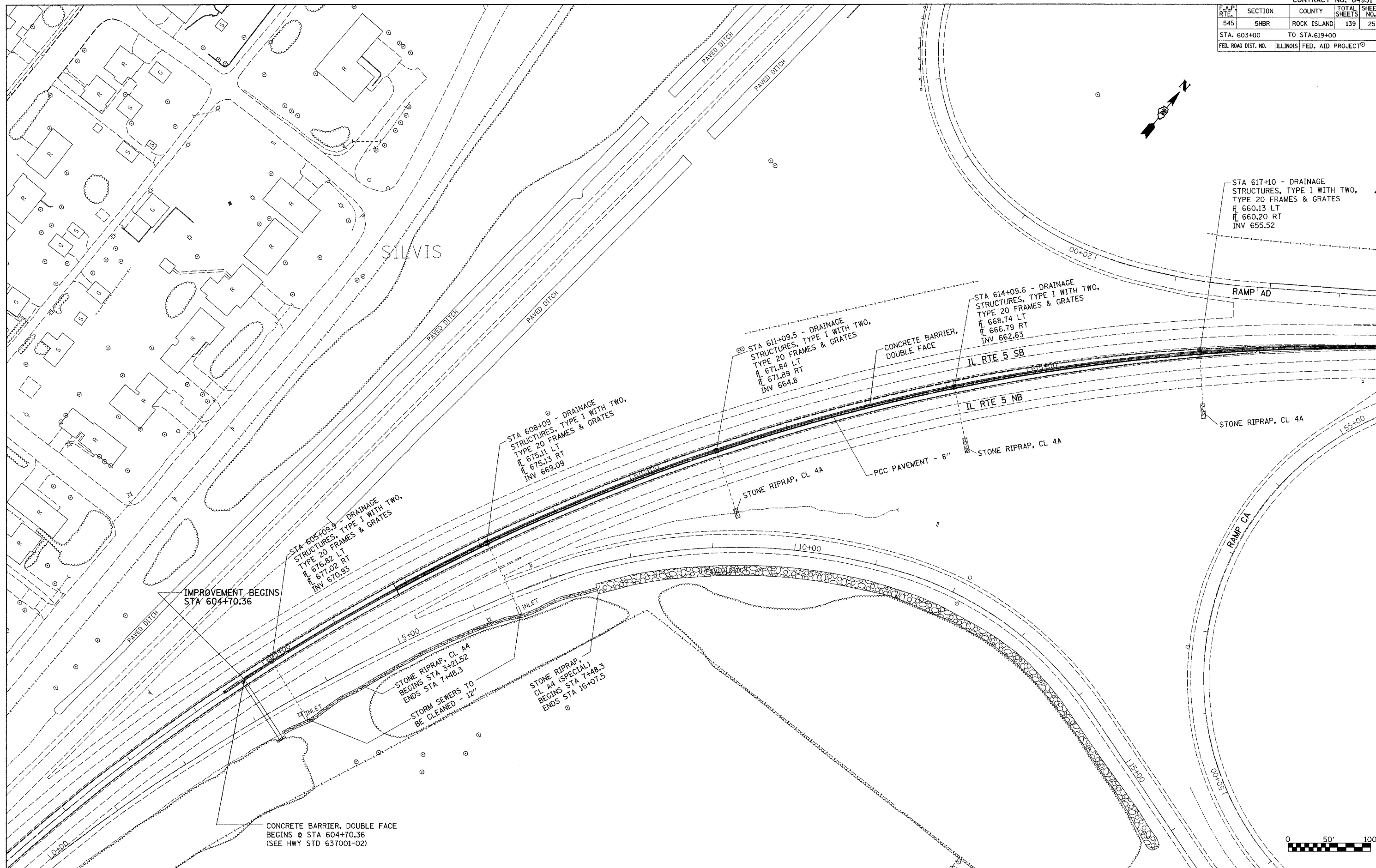


F.A.P. RTE.	SECTION	COUNTY	TOTAL SHEETS	SHEET NO.
545	5HBR	ROCK ISLAND	139	25
STA. 603+00		TO STA. 619+00		
FED. ROAD DIST. NO.		ILLINOIS FED. AID PROJECT		



STA 617+10 - DRAINAGE STRUCTURES, TYPE I WITH TWO, TYPE 20 FRAMES & GRATES  
 ELEV 660.13 LT  
 ELEV 660.20 RT  
 INV 655.52

STA 614+09.6 - DRAINAGE STRUCTURES, TYPE I WITH TWO, TYPE 20 FRAMES & GRATES  
 ELEV 668.74 LT  
 ELEV 666.79 RT  
 INV 662.63

STA 611+09.5 - DRAINAGE STRUCTURES, TYPE I WITH TWO, TYPE 20 FRAMES & GRATES  
 ELEV 671.84 LT  
 ELEV 671.89 RT  
 INV 664.8

STA 608+09 - DRAINAGE STRUCTURES, TYPE I WITH TWO, TYPE 20 FRAMES & GRATES  
 ELEV 675.11 LT  
 ELEV 675.13 RT  
 INV 669.09

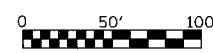
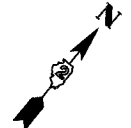
STA 605+09.3 - DRAINAGE STRUCTURES, TYPE I WITH TWO, TYPE 20 FRAMES & GRATES  
 ELEV 676.82 LT  
 ELEV 677.02 RT  
 INV 670.93

IMPROVEMENT BEGINS STA 604+70.36

STONE RIPRAP, CL 4A BEGINS STA 3+21.52 ENDS STA 7+48.3  
 STORM SEWERS TO BE CLEANED - 12"

STONE RIPRAP, CL 4A (SPECIAL) BEGINS STA 7+48.3 ENDS STA 16+07.5

CONCRETE BARRIER, DOUBLE FACE BEGINS @ STA 604+70.36 (SEE HWY STD 637001-02)



PLOT DATE = Wed Aug 22 13:44:59 2007  
 FILE NAME = n:\projects\p282823\882823pln1.dgn  
 PLOT SCALE = 5/8"=1'-0"  
 USER NAME = dmsdd