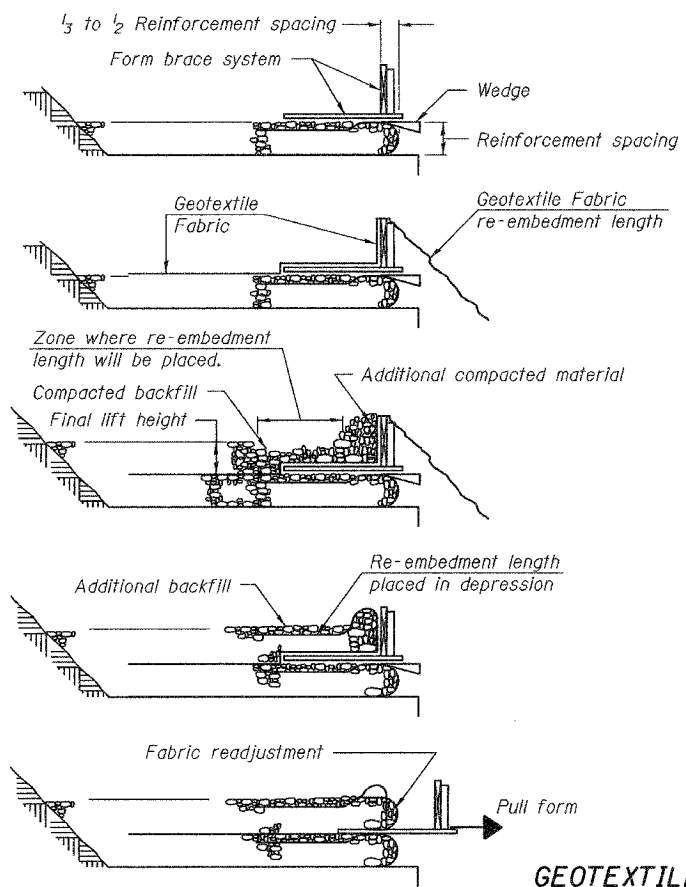


STATE OF ILLINOIS  
DEPARTMENT OF TRANSPORTATION

ROUTE NO.	SECTION	COUNTY	TOTAL SHEETS	SHEET NO.	SHEET NO. 3
F.A.P. 595	5HBR	Rock Island	139	53	33 SHEETS
FED. ROAD DIST. NO. 7	ILLINOIS	FED. AID PROJECT-			

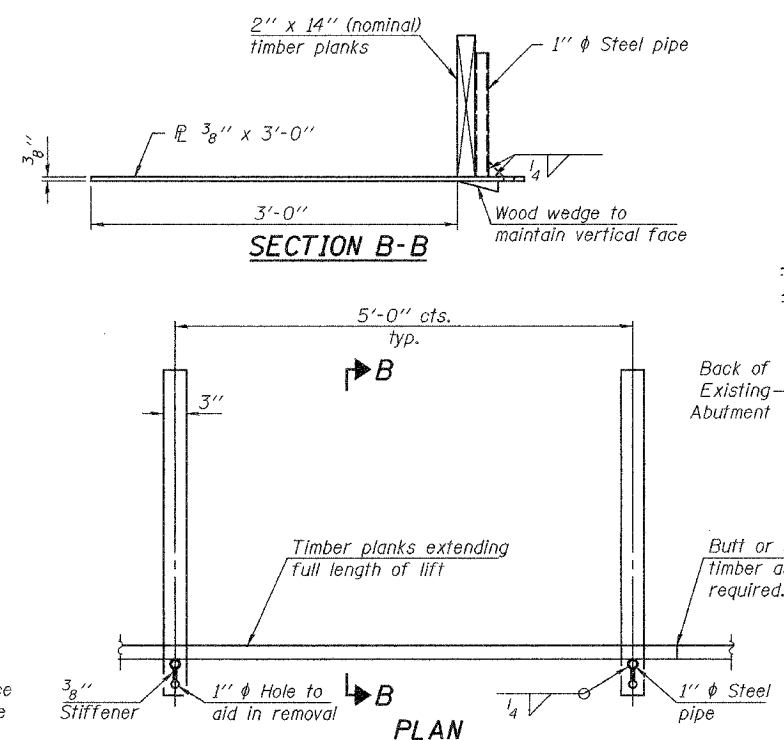
Contract #64931



- Place form brace system on completed reinforcement level; back from the finished fabric face a distance of  $\frac{1}{3}$  to  $\frac{1}{2}$  the reinforcement spacing.
- Position fabric so that the required re-embedment length extends over the top of the form brace and the design reinforcement width is placed with no slack against the previous level.
- Compact backfill material in lifts to final lift height, create (+3') depression in zone where re-embedment length will be located and place additional height of compacted material against form brace.
- Fold fabric re-embedment length back over form brace into zone where depression was made in backfill and place additional compacted backfill, (+3') to embed fabric and bring to final lift height.
- Pull form brace outward allowing fabric face to slightly readjust to form tight round face and level with plan reinforcement spacing.

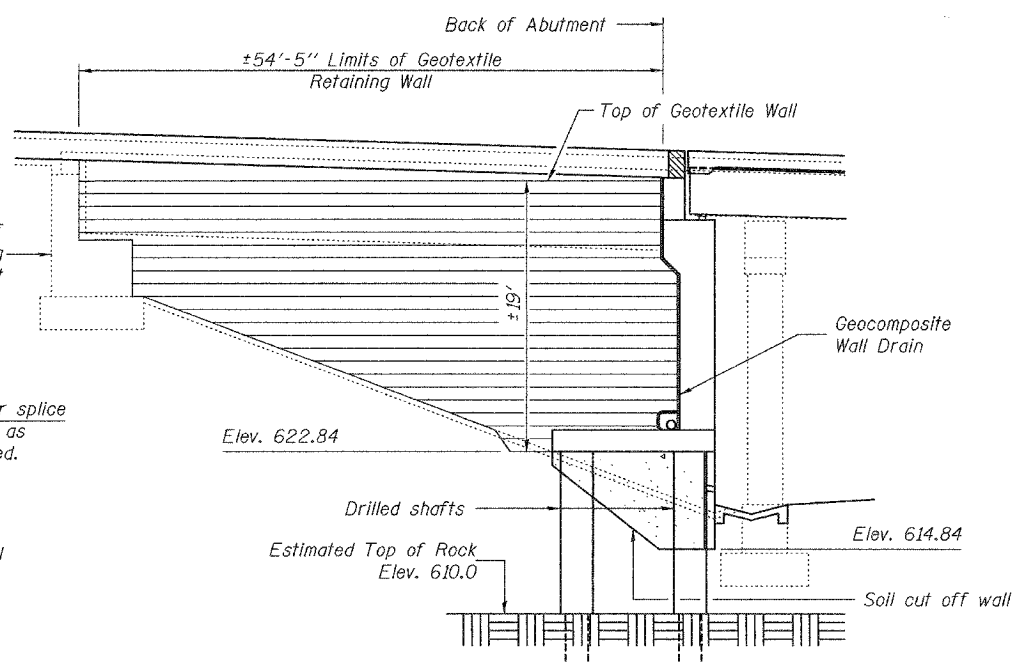
**GEOTEXTILE WALL  
CONSTRUCTION PROCEDURE**

Notes: The geotextile fabric shall have a minimum allowable tensile strength (T min.) of 84 lb./in. as determined by the procedure stated in the Special Provisions. The computations supporting the determination of (T min.) shall be submitted to the engineer for approval.

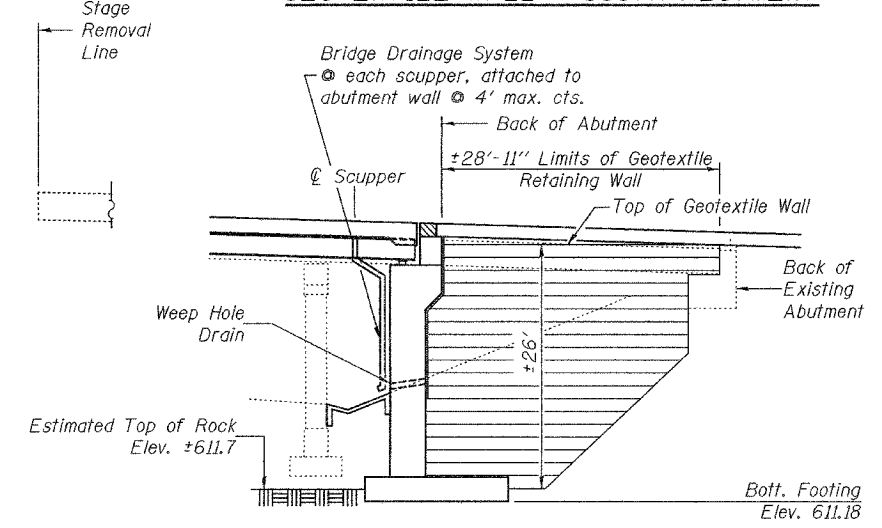


**REMOVABLE FORM BRACE DETAIL**

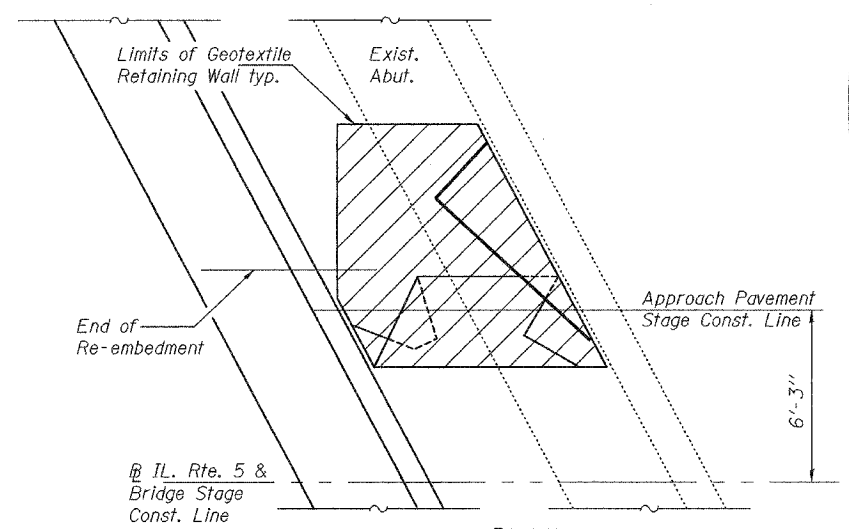
The temporary form brace detail is provided as a guide. The contractor is responsible for the design and performance of the form system used.



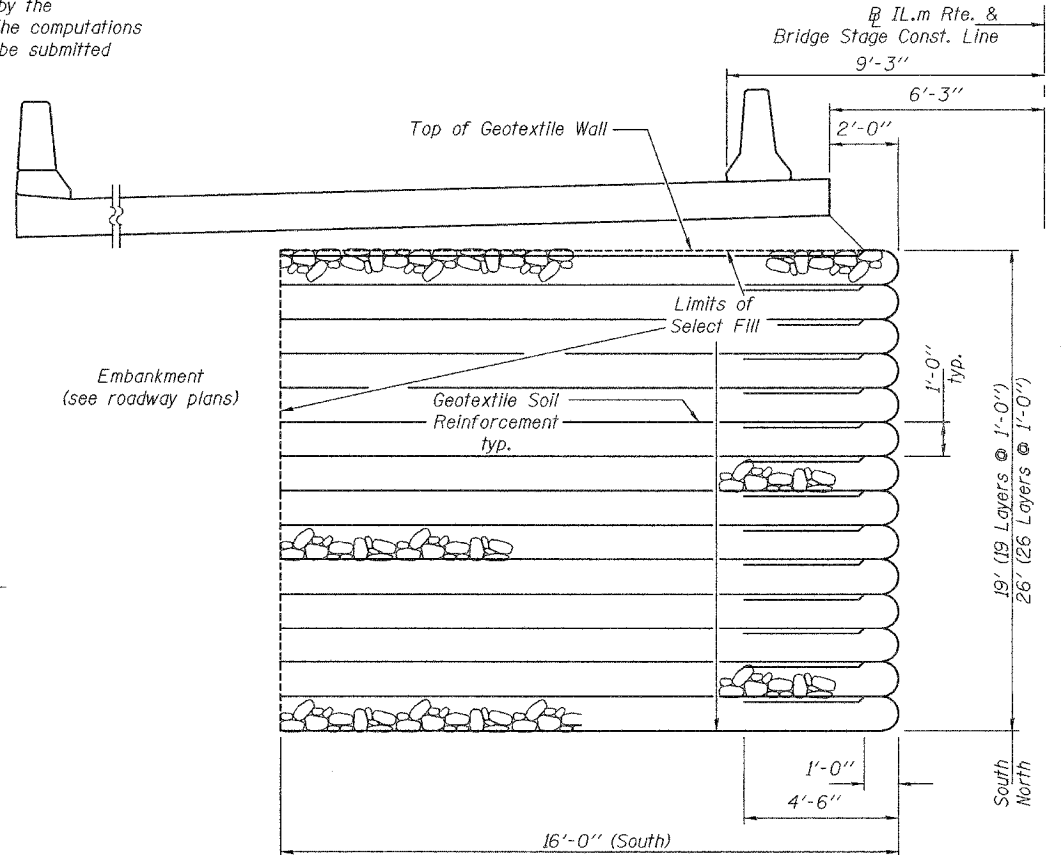
**GEOTEXTILE WALL - SOUTH ABUTMENT**



**GEOTEXTILE WALL - NORTH ABUTMENT**



**PLAN**  
(North Abutment shown, South Abutment similar)



**GEOTEXTILE WALL - TYPICAL SECTION**  
(Looking North)

**BILL OF MATERIAL**

ITEM	UNIT	QUANTITY
Geotextile Retaining Wall	Sq. Ft.	1362
Bridge Drainage System	L.S.	1

**GEOTEXTILE RETAINING WALL  
IL. RTE. 5 OVER IL. RTE. 84  
F.A.P. RTE. 595 - SECTION 5HBR  
ROCK ISLAND COUNTY  
STATION 623+65.69  
S.N. 081-0169**

DESIGNED	Dewey H. Coultas
CHECKED	Chad E. Hodel
DRAWN	W.D. Collins
CHECKED	D.H.C./C.E.H.

October 5, 2007  
EXAMINED *Thomas J. Romagosa*  
PASSED *Ralph E. Anderson*  
ENGINEER OF BRIDGES AND STRUCTURES