

STATE OF ILLINOIS
DEPARTMENT OF TRANSPORTATION

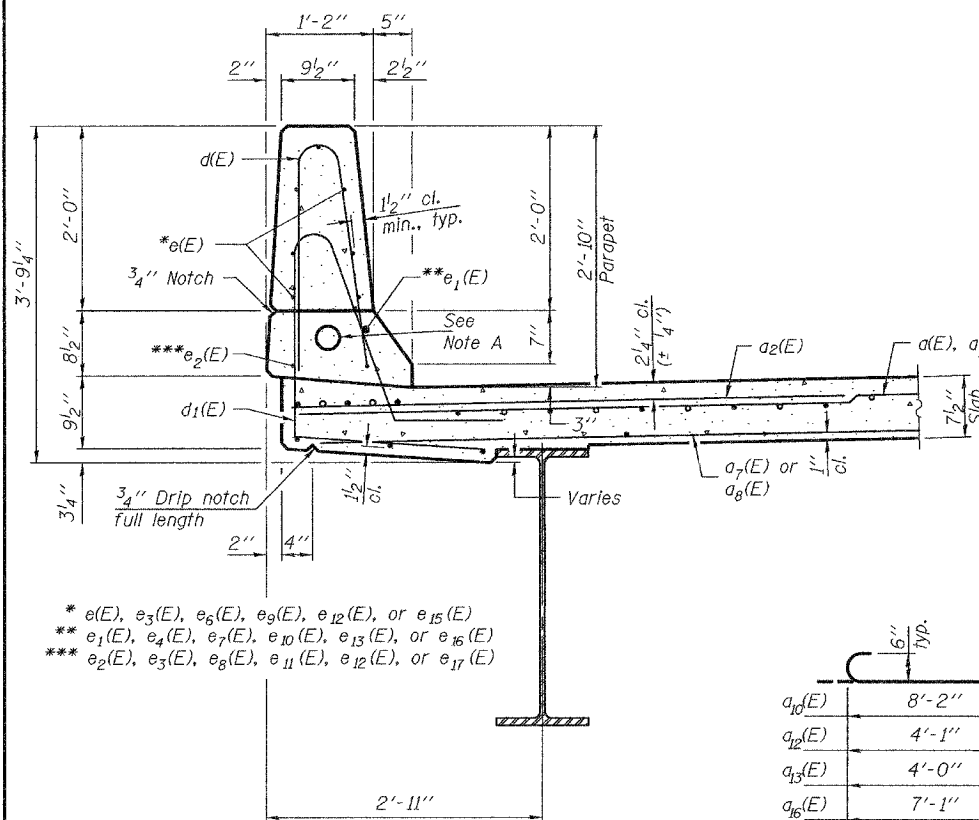
ROUTE NO.	SECTION	COUNTY	POST MILES	SHEET	SHEET NO. 16 33 SHEETS
F.A.P. 595	5HBR	Rock Island	139	66	
FED. ROAD DIST. NO. 7		ILLINOIS		FED. AID PROJECT	

Contract #64931

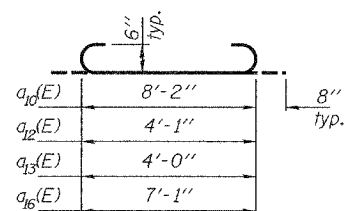
Note A: Conduit embedded in structure, 2" Dia., PVC, west side only. Provide minimum clearance of 1" to reinforcement bars and locate to miss locking rail of expansion joint.

Hatched area to be poured after superstructure forms have been removed. Quantity of concrete included with Concrete Superstructure.

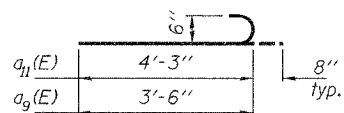
For details of expansion joint See sheet 17 of 33.



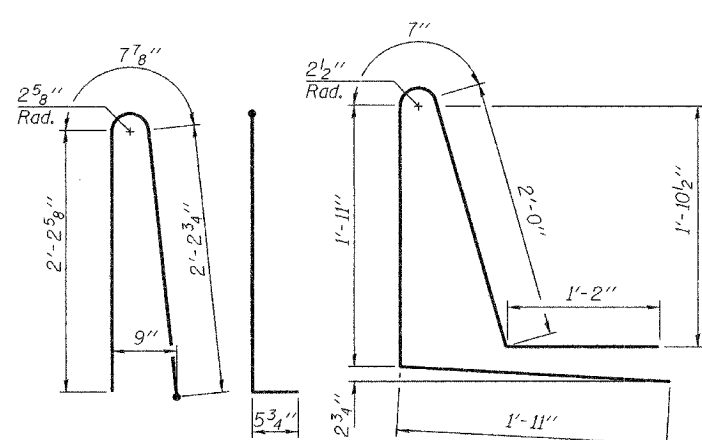
SECTION THRU PARAPET
(Dims. are at Rt. L to bk. of parapet)



BAR a_{10,12,13,16}(E)

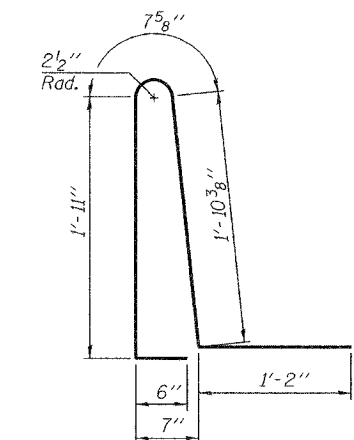


BAR a_{9,11}(E)

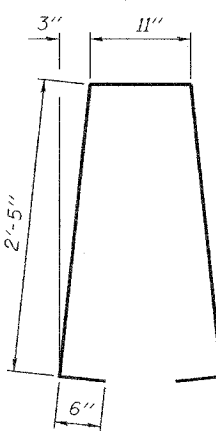


BAR d(E)

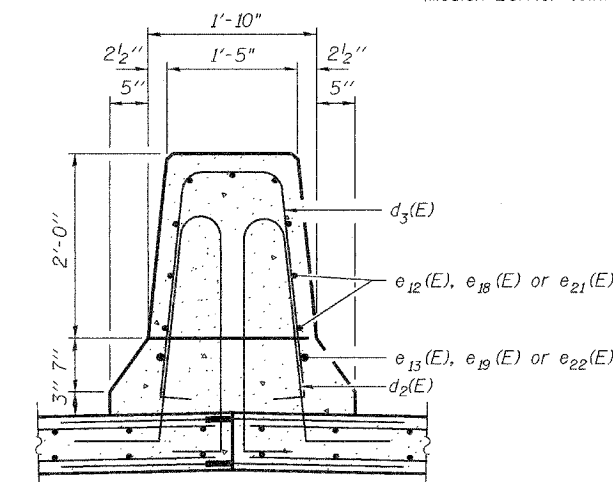
BAR d₁(E)



BAR d₂(E)

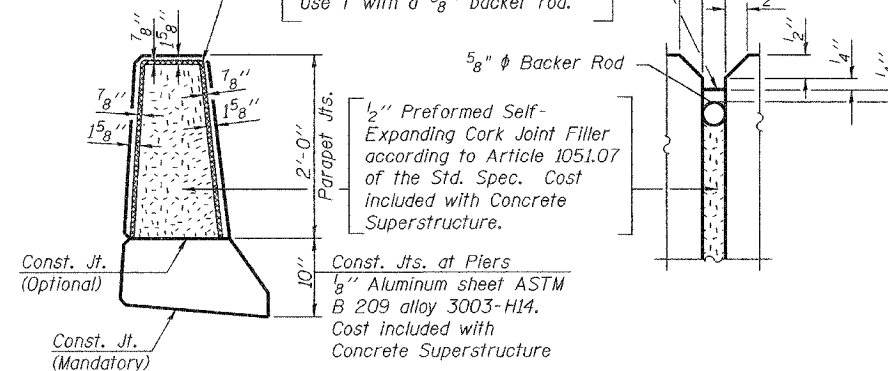


BAR d₃(E)



SECTION THRU MEDIAN BARRIER

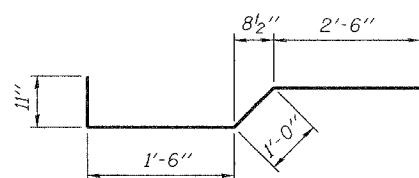
Non-staining gray one component non-sag elastomeric gun grade polyurethane sealant meeting the requirements of ASTM C-920, Type S, Grade NS, Class 25, Use T with a 5/8" backer rod.



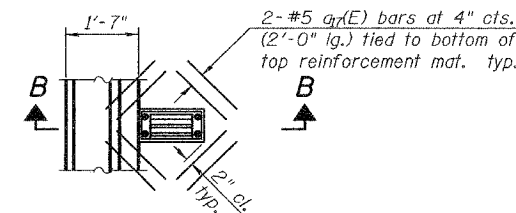
PARAPET JOINT DETAILS
(Median Barrier Joint Details similar)

END OF BEAM
TO BACK WALL

Beam	S. Abut.	N. Abut.
1	10 1/2"	11 3/8"
2	10 1/4"	10 5/8"
3-13	10"	10 5/8"
14	9 7/8"	10 5/8"



BAR x(E)



PLAN

SUPERSTRUCTURE
BILL OF MATERIAL

Bar	No.	Size	Length	Shape
a(E)	305	#5	28'-0"	—
a ₁ (E)	538	#5	23'-6"	—
a ₂ (E)	272	#6	6'-0"	—
a ₃ (E)	16	#7	31'-7"	—
a ₄ (E)	16	#7	29'-0"	—
a ₅ (E)	123	#5	25'-3"	—
a ₆ (E)	117	#5	26'-3"	—
a ₇ (E)	939	#5	17'-8"	—
a ₈ (E)	73	#5	48'-0"	—
a ₉ (E)	6	#6	4'-2"	—
a ₁₀ (E)	54	#6	9'-6"	—
a ₁₁ (E)	6	#6	4'-11"	—
a ₁₂ (E)	6	#6	5'-5"	—
a ₁₃ (E)	3	#6	5'-4"	—
a ₁₄ (E)	4	#6	28'-9"	—
a ₁₅ (E)	4	#6	26'-4"	—
a ₁₆ (E)	3	#6	8'-5"	—
a ₁₇ (E)	16	#5	2'-0"	—
b(E)	435	#5	28'-6"	—
b ₁ (E)	90	#5	29'-3"	—
b ₂ (E)	546	#5	24'-0"	—
b ₃ (E)	114	#5	24'-8"	—
b ₄ (E)	105	#6	42'-0"	—
d(E)	298	#5	5'-7"	—
d ₁ (E)	298	#5	7'-7"	—
d ₂ (E)	296	#5	6'-1"	—
d ₃ (E)	147	#5	6'-9"	—
e(E)	28	#4	16'-4"	—
e ₁ (E)	2	#8	35'-3"	—
e ₂ (E)	3	#4	23'-3"	—
e ₃ (E)	16	#4	10'-2"	—
e ₄ (E)	2	#8	10'-2"	—
e ₅ (E)	21	#4	17'-1"	—
e ₆ (E)	2	#8	27'-10"	—
e ₇ (E)	2	#4	26'-10"	—
e ₈ (E)	28	#4	15'-8"	—
e ₉ (E)	2	#8	33'-6"	—
e ₁₀ (E)	3	#4	22'-1"	—
e ₁₁ (E)	34	#4	9'-8"	—
e ₁₂ (E)	6	#8	9'-8"	—
e ₁₃ (E)	21	#4	16'-10"	—
e ₁₄ (E)	2	#8	27'-3"	—
e ₁₅ (E)	2	#4	26'-2"	—
e ₁₆ (E)	36	#4	16'-0"	—
e ₁₇ (E)	4	#8	34'-3"	—
e ₁₈ (E)	27	#4	17'-0"	—
e ₁₉ (E)	4	#8	27'-6"	—
e ₂₀ (E)	169	#5	5'-11"	—
e ₂₁ (E)				
e ₂₂ (E)				
x(E)				
Reinforcement Bars, Epoxy Coated	Pound		105,980	
Concrete Superstructure	Cu. Yds.		391.8	

Bars indicated thus 1 x 2 - #5 etc. indicates 1 line of bars with 2 lengths per line.

SUPERSTRUCTURE DETAILS
IL. RTE. 5 OVER IL. RTE. 84
F.A.P. RTE. 595 - SECTION 5HBR
ROCK ISLAND COUNTY
STATION 623+65.69
S.N. 081-0169

DESIGNED	Dewey H. Coultas
CHECKED	Chad E. Hodel
DRAWN	W.D. Collins
CHECKED	D.H.C./C.E.H.

EXAMINED	Thomas J. Demagala	October 5, 2007
PASSED	Ralph E. Anderson	

S-2-D 10-22-04