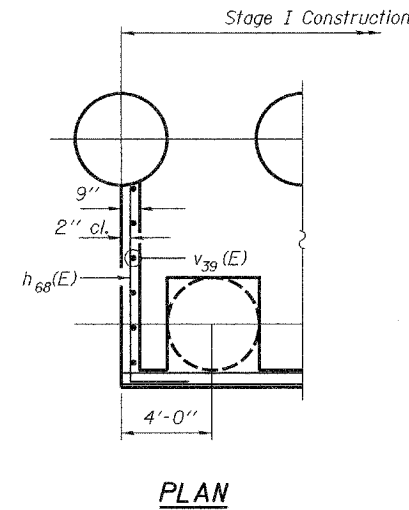
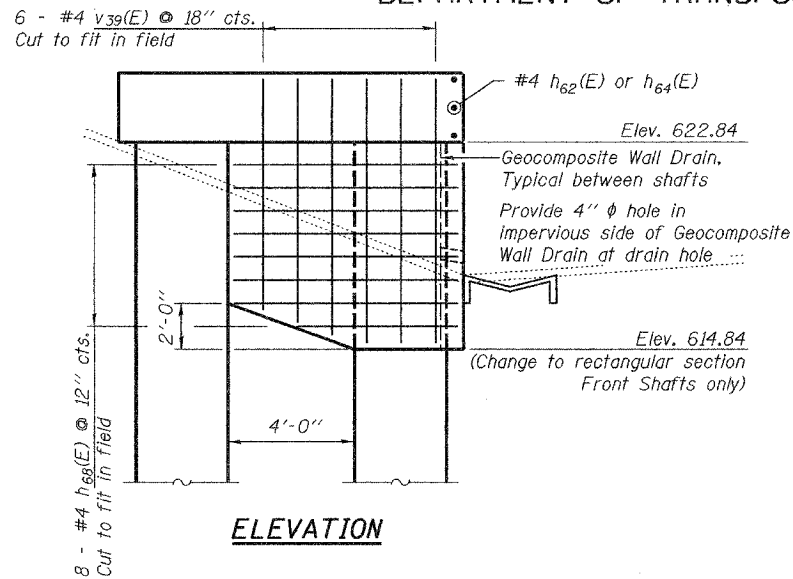


STATE OF ILLINOIS
DEPARTMENT OF TRANSPORTATION

ROUTE NO.	SECTION	COUNTY	TOTAL SHEETS	SHEET NO.
F.A.P. 595	5HBR	Rock Island	139	75
FED. ROAD DIST. NO. 7	ILLINOIS	FED. AID PROJECT		

SHEET NO. 25
33 SHEETS
Contract #64931

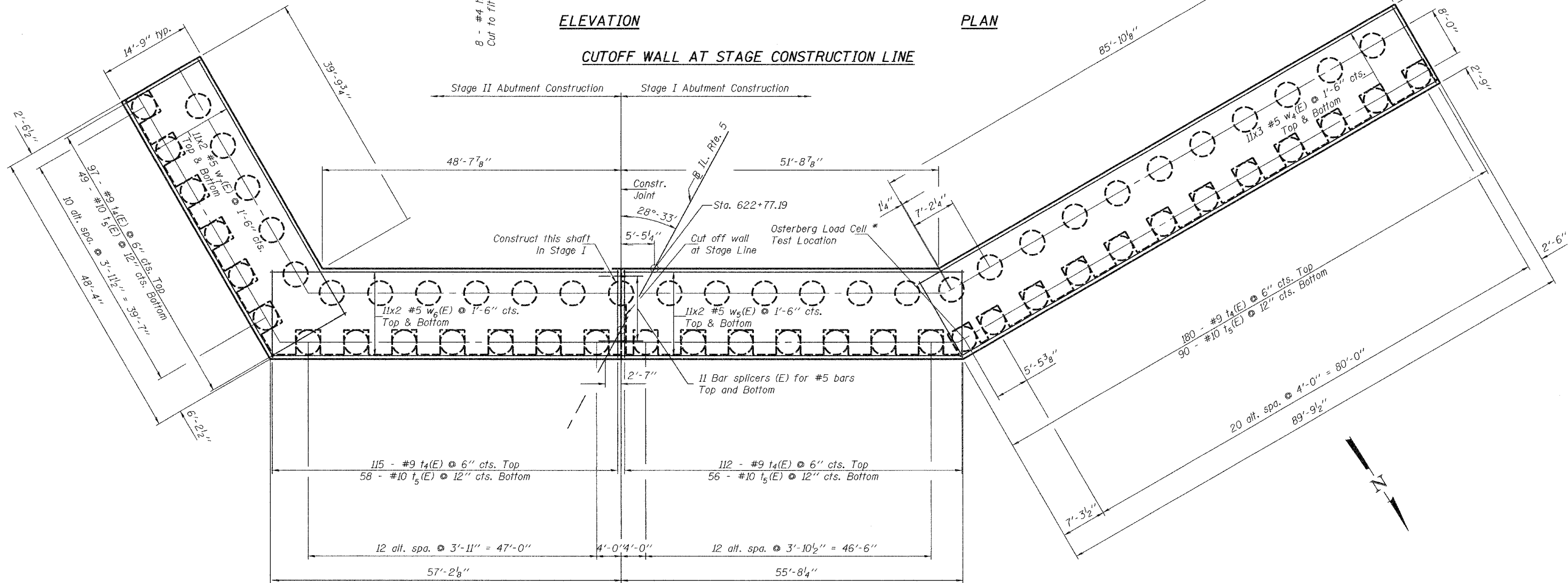
Notes:
Where the mat of footing reinforcement for the wingwalls intersects the mat of footing reinforcement for the abutment, the mat of reinforcement for the wingwalls shall be tied inside the mat of reinforcement for the abutment.



ELEVATION

PLAN

CUTOFF WALL AT STAGE CONSTRUCTION LINE



FOOTING PLAN
(Drilled Shafts)

*The Osterberg Cell (O-Cell) shall have a minimum capacity of 1600 kips in each direction.

SOUTH ABUTMENT - FOOTING PLAN
IL. RTE. 5 OVER IL. RTE. 84
F.A.P. RTE. 595 - SECTION 5HBR
ROCK ISLAND COUNTY
STATION 623+65.69
S.N. 081-0169

DESIGNED	Dewey H. Coultas
CHECKED	Chad E. Hodel
DRAWN	W.D. Collins
CHECKED	D.H.C./C.E.H.

EXAMINED	Thomas J. Damagala ENGINEER OF BRIDGE DESIGN
PASSED	Ralph E. Anderson ENGINEER OF BRIDGES AND STRUCTURES

October 5, 2007