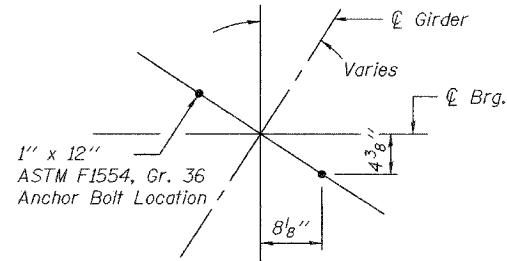


STATE OF ILLINOIS
DEPARTMENT OF TRANSPORTATION

Contract #64931

ROUTE NO.	SECTION	COUNTY	TOTAL SHEETS	SHEET	NO.
F.A.P. 595	5HBR	Rock Island	139	78	33 SHEETS
FED. ROAD DIST. NO. 7	ILLINOIS	FED. AID PROJECT			

Notes:
Work this sheet with Sheets 29 & 30 of 33.
Where the mat of footing reinforcement for the wingwalls intersects the mat of footing reinforcement for the abutment, the mat of reinforcement for the wingwalls shall be tied inside the mat of reinforcement for the abutment.

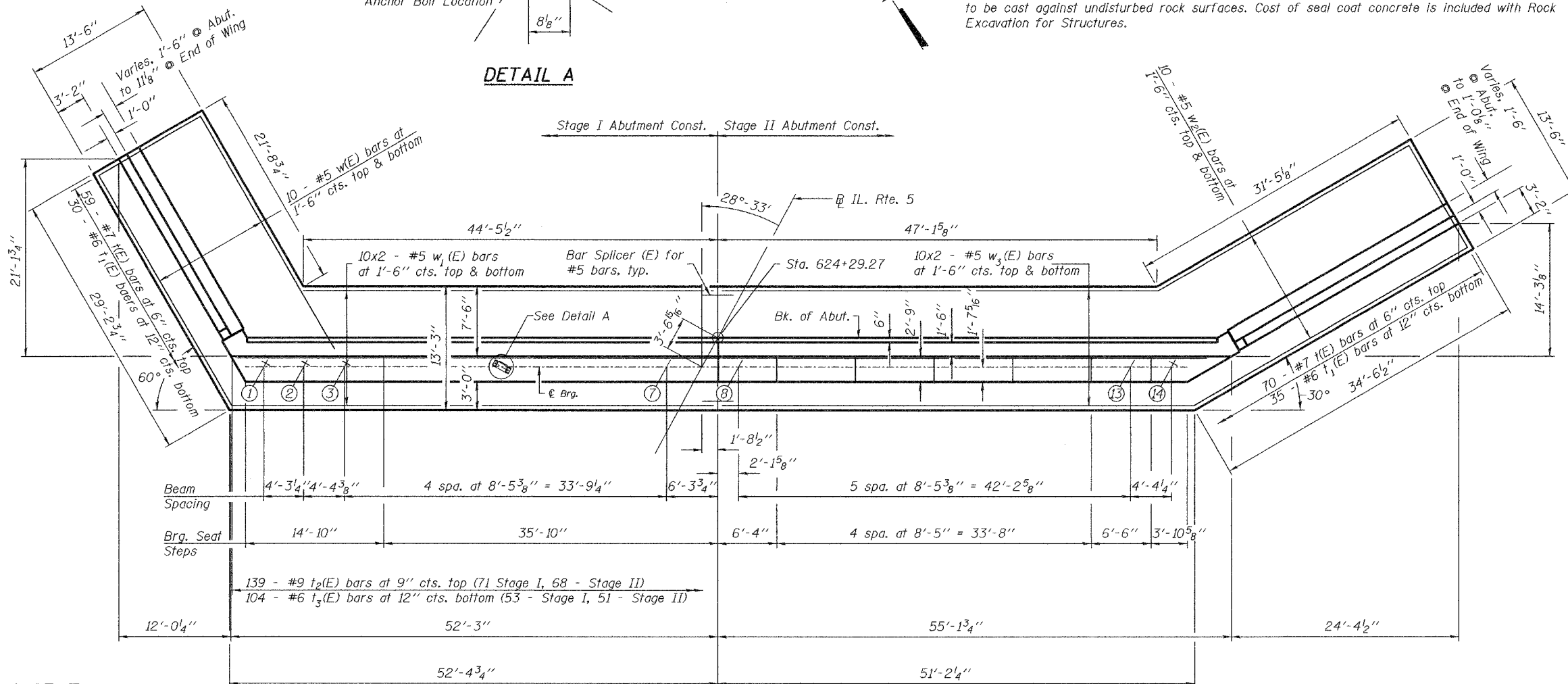


Note: The bottom of the proposed footing elevation shall be adjusted to ensure a minimum embedment of 6 in. below the bottom of existing Pier 3 footing. The footing excavation shall be undercut by 6 in. and immediately filled with 6\" seal coat concrete to prevent degradation of the exposed foundation material surface. The rock excavation shall be made with near-vertical sides at the plan dimensions to allow the sides and base of the embedded portion of the footing to be cast against undisturbed rock surfaces. Cost of seal coat concrete is included with Rock Excavation for Structures.

BILL OF MATERIAL

Bar	No.	Size	Length	Shape
h(E)	46	#5	24'-5"	
h ₁ (E)	48	#5	29'-8"	
h ₂ (E)	84	#5	27'-4"	
h ₃ (E)	21	#5	8'-9"	
h ₄ (E)	21	#5	7'-9"	
h ₅ (E)	3	#5	9'-1"	
h ₆ (E)	23	#5	7'-3"	
h ₇ (E)	3	#5	9'-7"	
h ₈ (E)	5	#4	9'-9"	
h ₁₀ (E)	5	#4	14'-5"	
h ₁₃ (E)	6	#5	24'-5"	
h ₁₄ (E)	12	#5	29'-8"	
h ₁₅ (E)	6	#5	27'-4"	
h ₁₆ (E)	5	#6	24'-10"	
h ₁₇ (E)	10	#6	29'-8"	
h ₁₈ (E)	5	#6	27'-9"	
h ₁₉ (E)	23	#5	5'-10"	
h ₂₀ (E)	39	#4	22'-1"	
h ₂₁ (E)	2	#4	23'-10"	
h ₂₂ (E)	40	#4	26'-10"	
h ₂₃ (E)	2	#4	27'-5"	
n(E)	146	#10	10'-0"	
n ₁ (E)	124	#6	6'-3"	
n ₂ (E)	99	#9	9'-10"	
s(E)	27	#4	8'-5"	
t(E)	129	#7	13'-2"	
t ₁ (E)	65	#6	13'-2"	
t ₂ (E)	139	#9	12'-11"	
t ₃ (E)	104	#6	12'-11"	
v(E)	146	#7	18'-1"	
v ₁ (E)	124	#6	20'-3"	
v ₂ (E)	102	#5	12'-10"	
v ₃ (E)	105	#5	2'-0"	
v ₄ (E)	105	#4	3'-7"	
v ₅ (E)	204	#5	4'-0"	
v ₆ (E)	108	#5	5'-0"	
v ₇ (E)	17	#5	7'-7"	
v ₈ (E)	10	#7	15'-5"	
v ₉ (E)	10	#7	17'-7"	
v ₁₀ (E)	10	#7	19'-11"	
v ₁₁ (E)	10	#7	22'-3"	
v ₁₂ (E)	5	#7	23'-1"	
v ₁₃ (E)	16	#7	15'-11"	
v ₁₄ (E)	16	#7	18'-5"	
v ₁₅ (E)	16	#7	20'-10"	
v ₁₆ (E)	6	#7	21'-8"	
v ₁₇ (E)	30	#4	13'-7"	
w(E)	20	#5	28'-10"	
w ₁ (E)	20	#5	34'-2"	
w ₂ (E)	40	#5	27'-3"	
w ₃ (E)	40	#5	26'-8"	
Concrete Structures	Cu. Yd.		584.7	
Reinforcement Bars, Epoxy Coated	Pound		52,780	
Rock Excavation for Structures	Cu. Yd.		77.1	
Structure Excavation	Cu. Yd.		1173	
Concrete Sealer	Sq. Ft.		2,136	

NORTH ABUTMENT PLAN
IL. RTE. 5 OVER IL. RTE. 84
F.A.P. RTE. 595 - SECTION 5HBR
ROCK ISLAND COUNTY
STATION 623+65.69
S.N. 081-0169

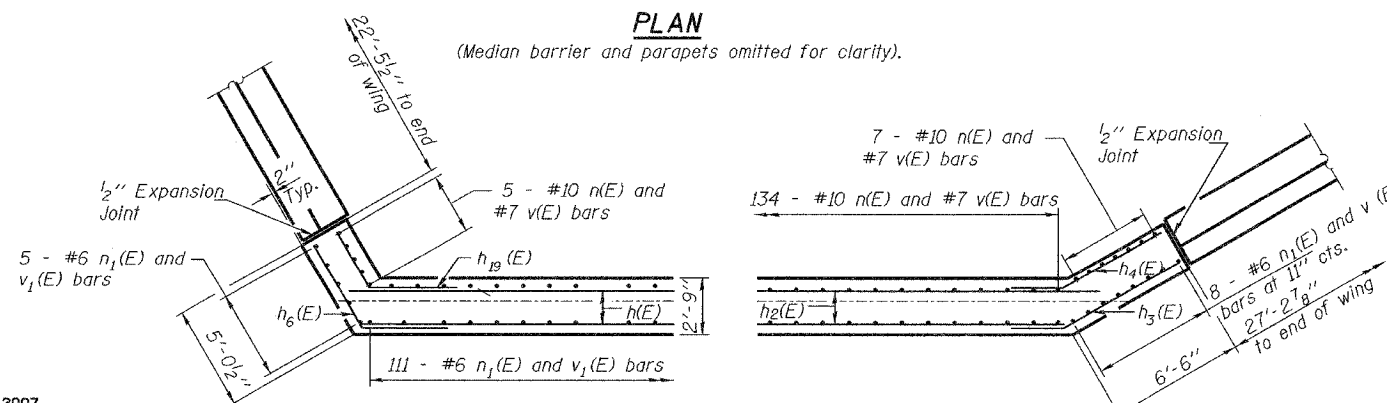


BEARING SEAT ELEVATIONS

Location	N. Abut.
Bm. 1	636.16
Bm. 2	636.16
Bm. 3	636.16
Bm. 4	636.23
Bm. 5	636.23
Bm. 6	636.23
Bm. 7	636.23
Bm. 8	636.13
Bm. 9	635.90
Bm. 10	635.68
Bm. 11	635.45
Bm. 12	635.19
Bm. 13	634.93
Bm. 14	634.80

DESIGNED Dewey H. Coultas
CHECKED Chad E. Hodel
DRAWN W.D. Collins
CHECKED D.H.C./C.E.H.

October 5, 2007
EXAMINED Thomas J. Demagalibi
PASSED Ralph E. Anderson



Note: Concrete Sealer shall be applied to the vertical front face of the back wall, the horizontal area of the bearing seats, and the exposed vertical face of the abutment wall. See sheet 27 of 33 for Expansion Joint and Construction Joint Details.

See Sheet 29 of 33 for Section locations.