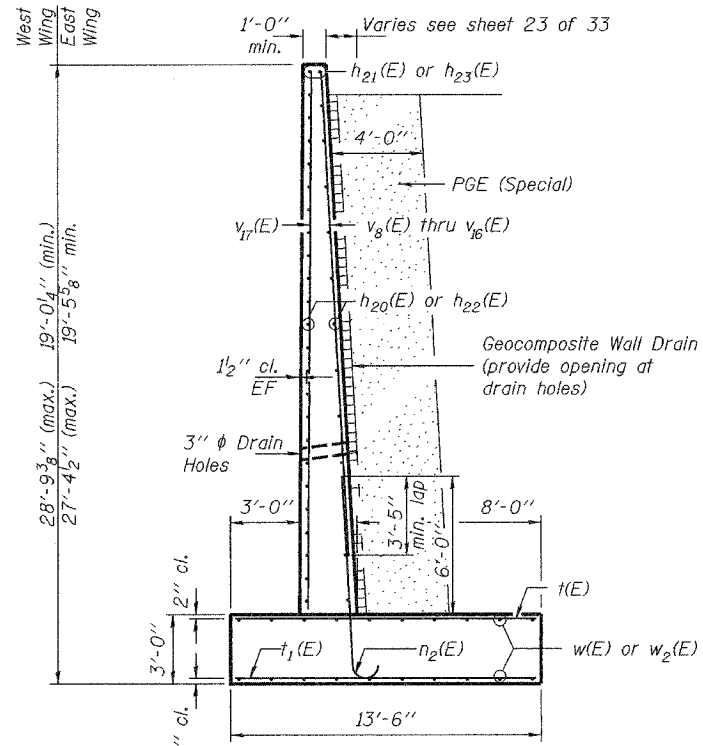


STATE OF ILLINOIS  
DEPARTMENT OF TRANSPORTATION

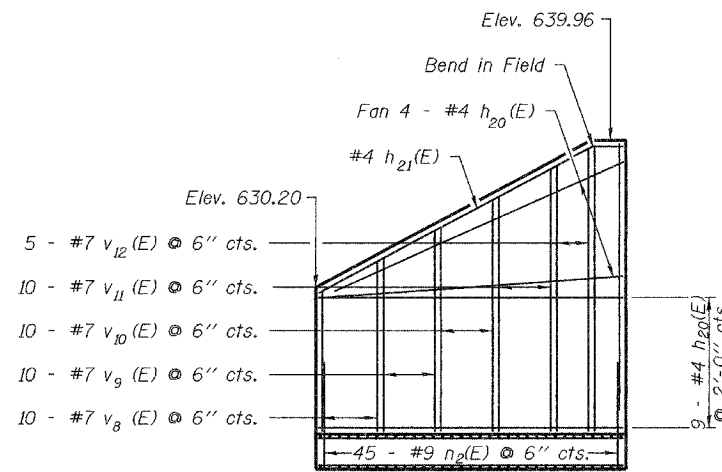
ROUTE NO.	SECTION	COUNTY	STATION	SHEET NO.
F.A.P. 595	5HBR	Rock Island	139	30
FED. ROAD DIST. NO. 7		ILLINOIS	FED. AID PROJECT-	

SHEET NO. 30  
33 SHEETS

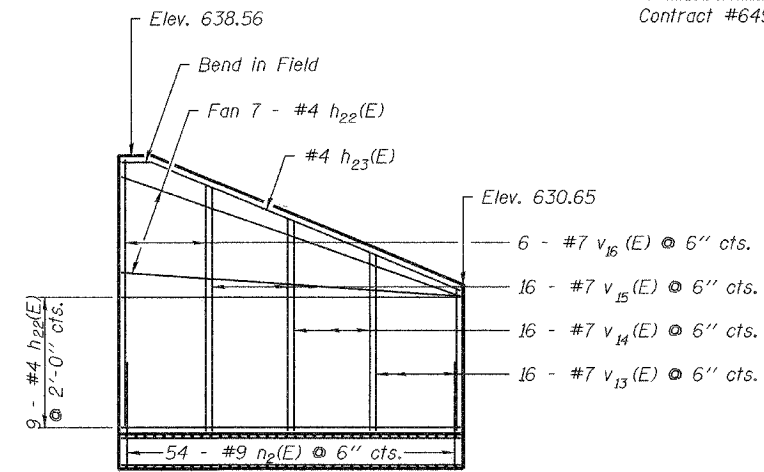
Contract #64931



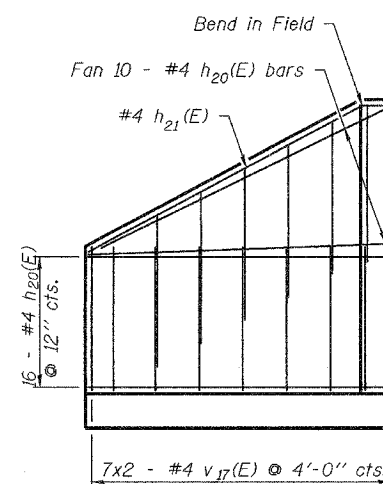
SECTION THRU WINGWALL



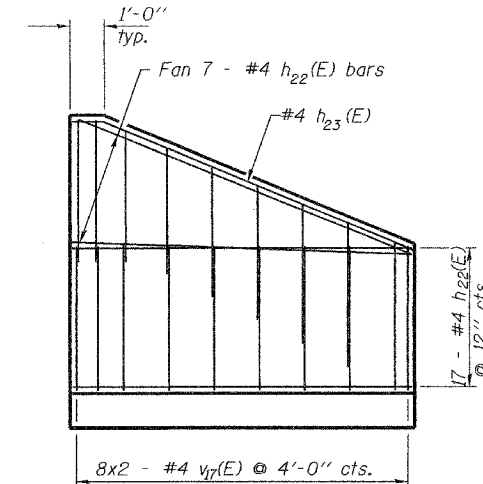
WEST WING (Back Face)



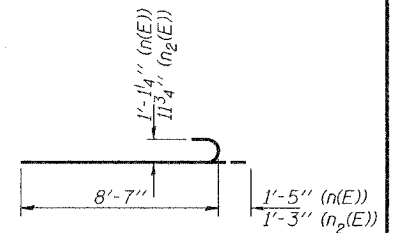
EAST WING (Back Face)



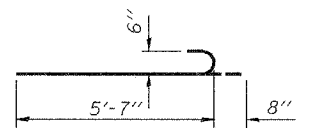
WEST WING (Front Face)



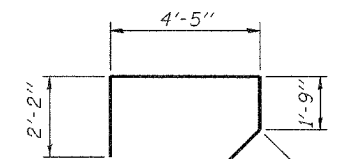
EAST WING (Front Face)



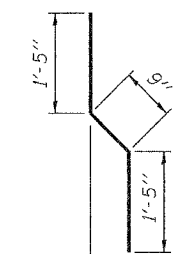
BAR  $n(E)$ ,  $n_2(E)$



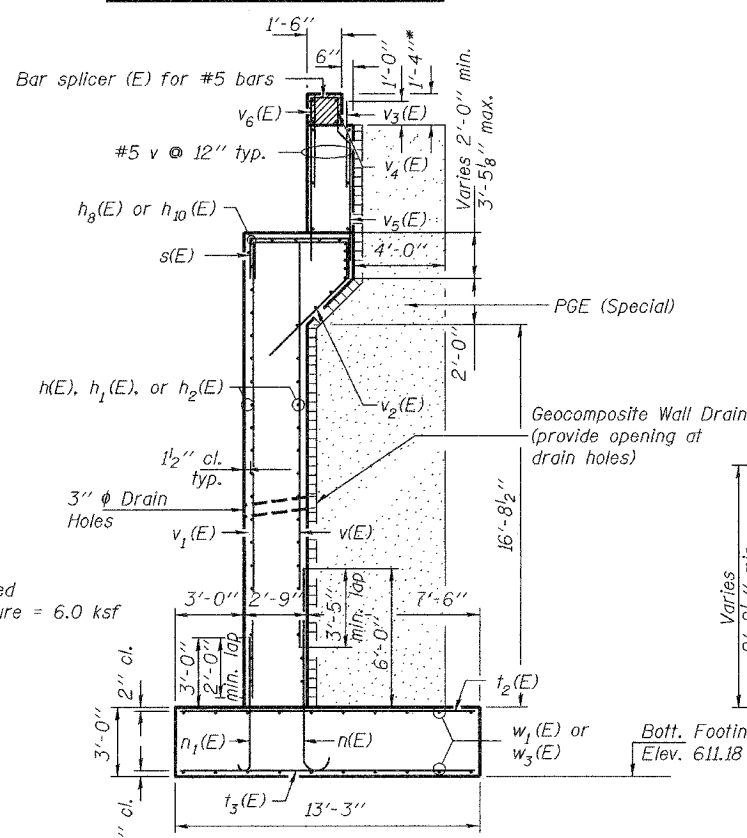
BAR  $n_1(E)$



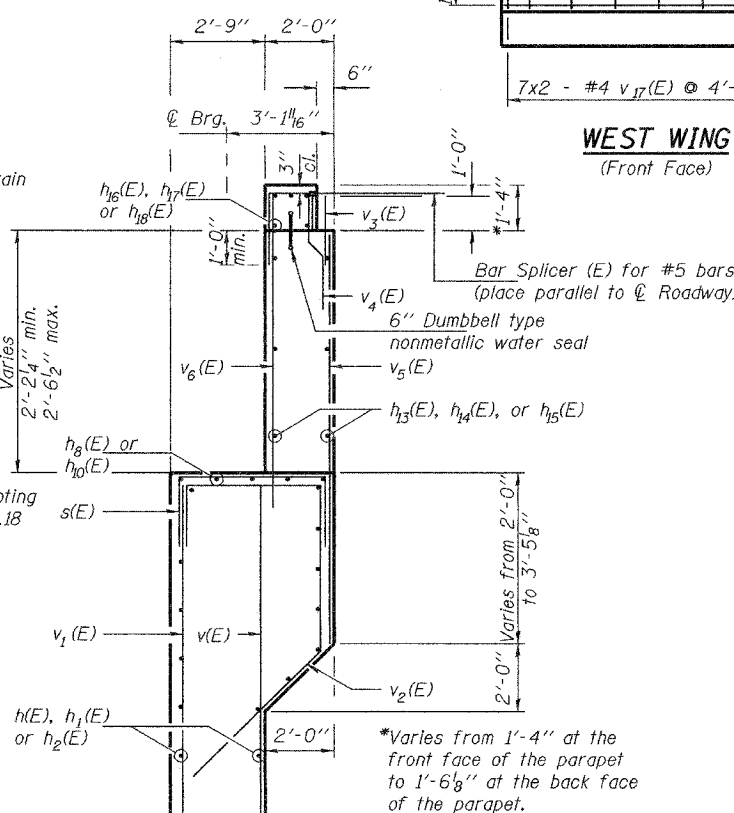
BAR  $v_2(E)$



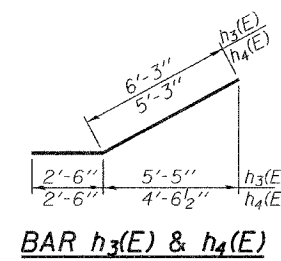
BAR  $v_4(E)$



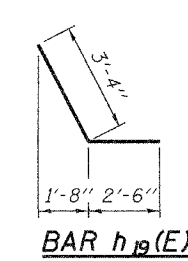
SECTION THRU ABUTMENT



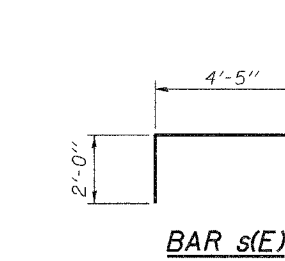
ABUTMENT REINFORCEMENT DETAIL



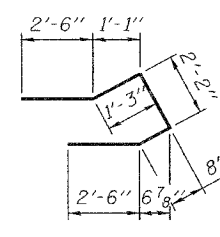
BAR  $h_3(E)$  &  $h_4(E)$



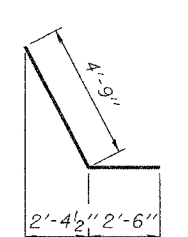
BAR  $h_{19}(E)$



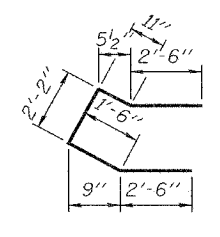
BAR  $s(E)$



BAR  $h_5(E)$



BAR  $h_6(E)$



BAR  $h_7(E)$

NORTH ABUTMENT DETAILS  
IL. 5 RTE. OVER IL. RTE. 84  
F.A.P. RTE. 595 - SECTION 5HBR  
ROCK ISLAND COUNTY  
STATION 623+65.69  
S.N. 081-0169

DESIGNED	Dewey H. Coultas
CHECKED	Chad E. Hodel
DRAWN	W.D. Collins
CHECKED	D.H.C./C.E.H.

EXAMINED	Thomas Demagali
PASSED	Ralph E. Anderson

October 5, 2007

\*Varies from 1'-4" at the front face of the parapet to 1'-6 3/8" at the back face of the parapet.

Maximum Applied Bearing Pressure = 6.0 ksf

Bot. Footing Elev. 611.18