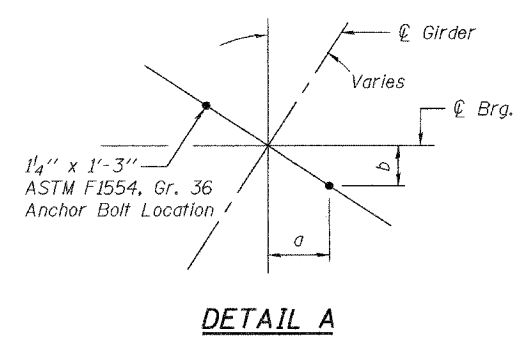
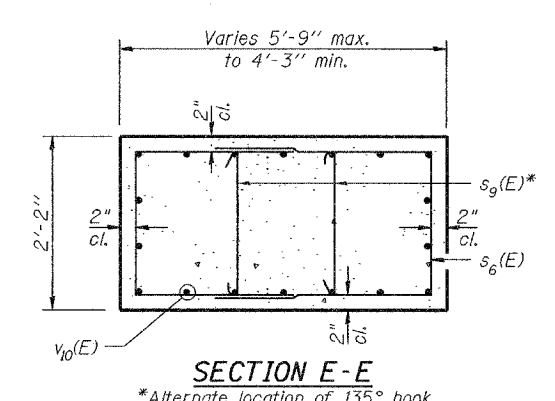
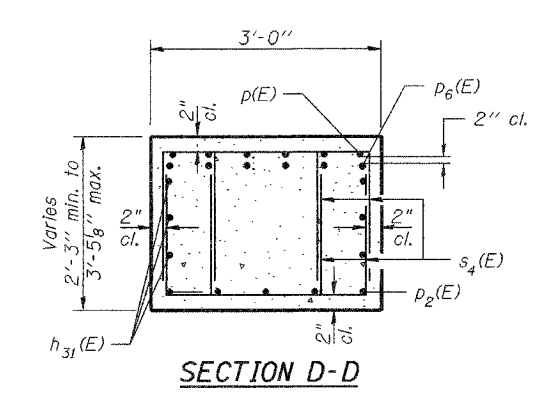
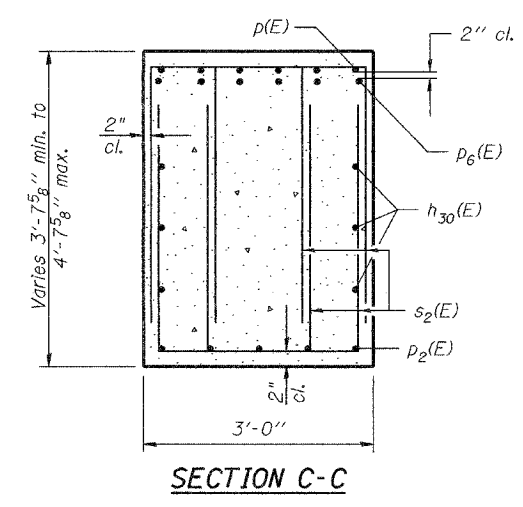
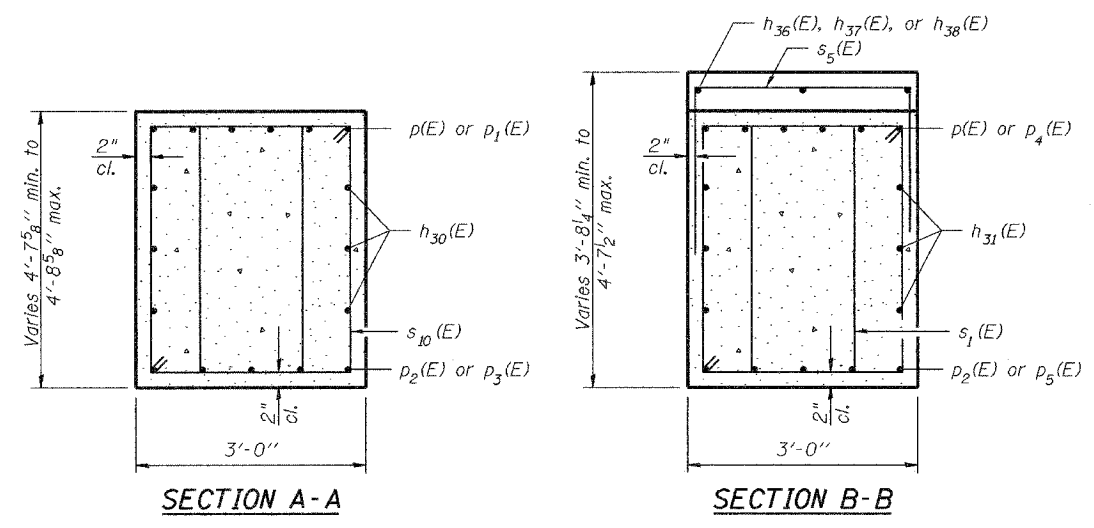


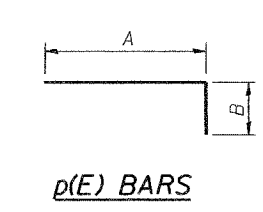
STATE OF ILLINOIS
DEPARTMENT OF TRANSPORTATION

ROUTE NO.	SECTION	COUNTY	TOTAL SHEETS	SHEET NO.
F.A.P. 595	5HBR	Rock Island	139	82
FED. ROAD DIST. NO. 7		ILLINOIS	FED. AID PROJECT-	

Contract #64931

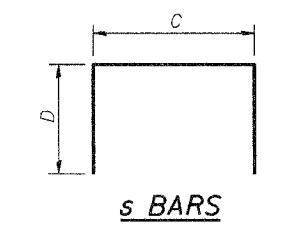


Bar	a	b
Girder 1	7"	4 3/8"
Girder 2	7 1/2"	4 1/8"
Girder 3 thru 13	7 1/4"	1'-4"
Girder 14	7 3/8"	1'-7"



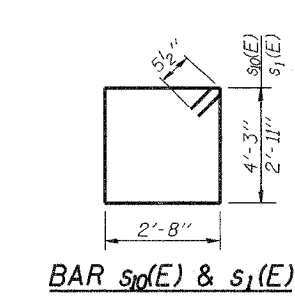
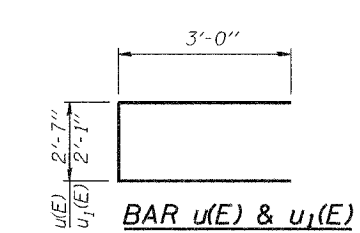
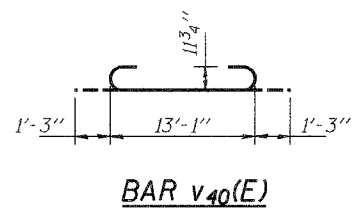
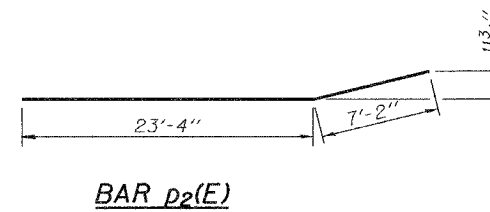
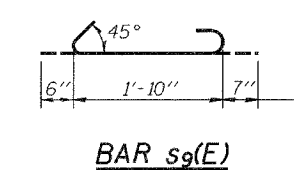
A & B DIMENSIONS

Bar	A	B
p(E)	39'-2"	1'-4"
p1(E)	19'-2"	1'-4"
p4(E)	20'-11"	1'-4"
p6(E)	13'-6"	1'-7"



C & D DIMENSIONS

Bar	C	D
s2(E)	2'-8"	3'-3"
s3(E)	2'-8"	2'-4"
s4(E)	2'-8"	1'-11"
s5(E)	2'-8"	2'-2"
s6(E)	1'-10"	3'-9"
s7(E)	2'-2"	8'-0"
s8(E)	2'-2"	4'-3"



BILL OF MATERIAL

Bar	No.	Size	Length	Shape
h30(E)	12	#5	27'-1"	
h31(E)	8	#5	28'-0"	
h32(E)	32	#5	23'-7"	
h33(E)	32	#5	24'-6"	
h34(E)	14	#8	24'-11"	
h35(E)	14	#8	25'-10"	
h36(E)	6	#4	21'-8"	
h37(E)	3	#4	24'-10"	
h38(E)	3	#4	8'-0"	
p(E)	12	#8	40'-6"	
p1(E)	6	#8	20'-6"	
p2(E)	10	#8	30'-6"	
p3(E)	5	#8	28'-0"	
p4(E)	6	#8	22'-3"	
p5(E)	5	#8	29'-9"	
p6(E)	10	#9	15'-1"	
s10(E)	90	#5	14'-9"	
s1(E)	96	#5	12'-1"	
s2(E)	32	#5	9'-2"	
s3(E)	28	#4	7'-4"	
s4(E)	16	#4	6'-6"	
s5(E)	76	#4	7'-0"	
s6(E)	120	#5	9'-4"	
s7(E)	94	#5	18'-2"	
s8(E)	94	#5	10'-8"	
s9(E)	120	#5	2'-11"	
s10(E)	96	#6	7'-2"	
u(E)	7	#6	8'-7"	
u1(E)	18	#6	8'-1"	
v40(E)	108	#9	15'-7"	
w10(E)	16	#5	24'-0"	
w11(E)	16	#5	24'-11"	
Structure Excavation		Cu. Yd.	150	
Concrete Structures		Cu. Yd.	197.6	
Reinforcement Bars, Epoxy Coated		Pound	24,010	
Rock Excavation For Structures		Cu. Yd.	26.4	
Concrete Sealer		Sq. Ft.	2888	

PIER DETAILS

IL. RTE. 5 OVER IL. RTE. 84
F.A.P. RTE. 595 - SECTION 5HBR
ROCK ISLAND COUNTY
STATION 623+65.69
S.N. 081-0169

DESIGNED	Dewey H. Coultas
CHECKED	Chad E. Hodel
DRAWN	W.D. Collins
CHECKED	D.H.C./C.E.H.

October 5, 2007
EXAMINED *Thomas J. Damagala*
PASSED *Ralph E. Anderson*

MIN. BAR LAP
#4 = 1'-8"
#5 = 2'-2"
#7 = 3'-5"
#8 = 4'-6"