

F.A.R. RTE.	SECTION	COUNTY	TOTAL SHEETS	SHEET NO.
553	1201-2	OGLE	59	26
STA.	TO STA.			
FED. ROAD DIST. NO.	ILLINOIS		FED. AID PROJECT	

PATRICIA A. BOSETTI

SN 071-1161

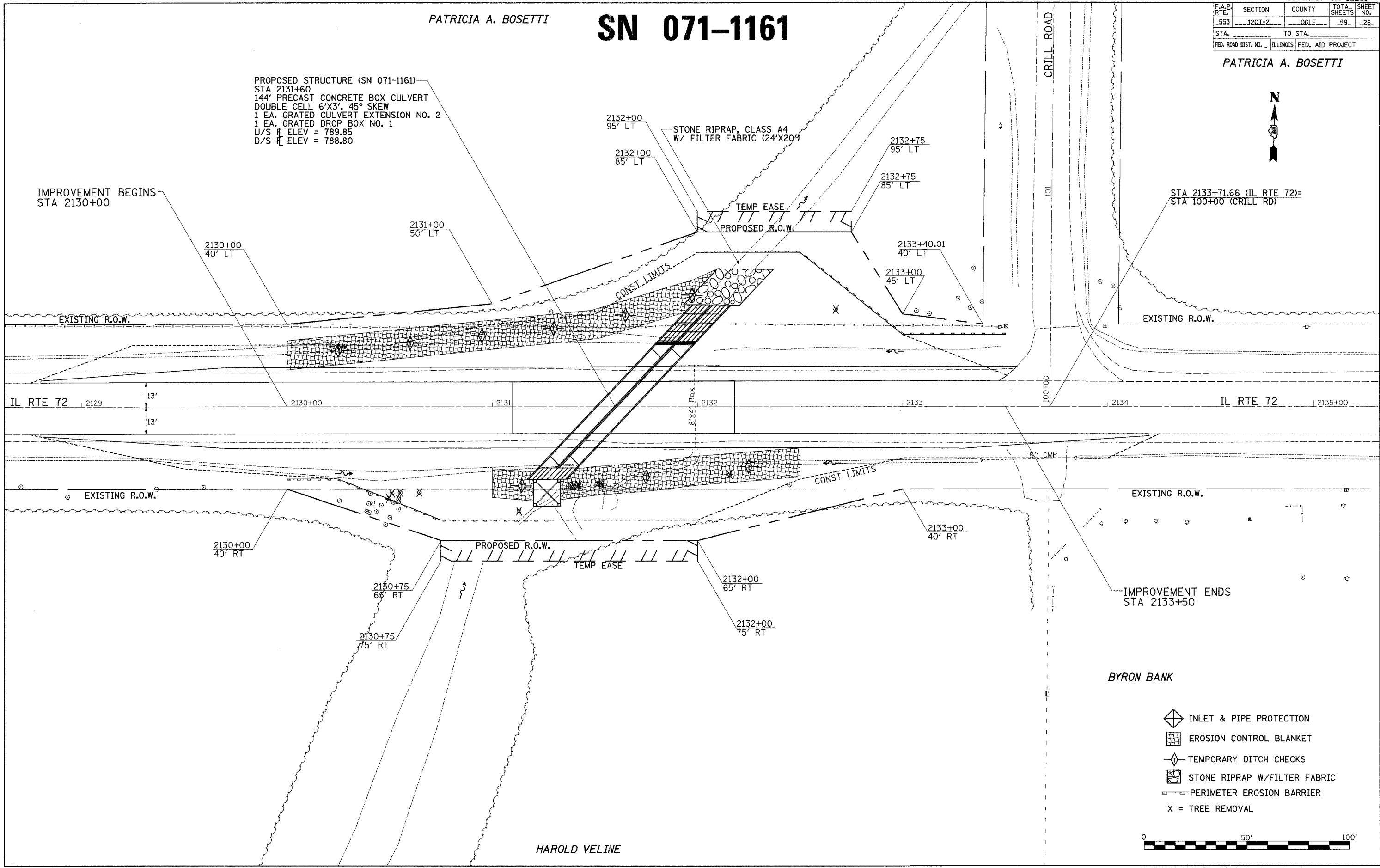
PATRICIA A. BOSETTI



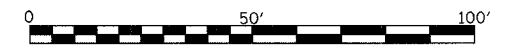
PROPOSED STRUCTURE (SN 071-1161)
 STA 2131+60
 144' PRECAST CONCRETE BOX CULVERT
 DOUBLE CELL 6'X3', 45° SKEW
 1 EA. GRATED CULVERT EXTENSION NO. 2
 1 EA. GRATED DROP BOX NO. 1
 U/S ELEV = 789.85
 D/S ELEV = 788.80

IMPROVEMENT BEGINS
STA 2130+00

STA 2133+71.66 (IL RTE 72)=
STA 100+00 (CRILL RD)



- INLET & PIPE PROTECTION
- EROSION CONTROL BLANKET
- TEMPORARY DITCH CHECKS
- STONE RIPRAP W/FILTER FABRIC
- PERIMETER EROSION BARRIER
- X = TREE REMOVAL



HAROLD VELINE

EROSION CONTROL DETAILS

PLOT DATE = Tue Aug 07 06:24:51 2007
 PLOT SCALE = 1" = 20'
 PLOT SHEET = 26
 USER NAME = dboard