

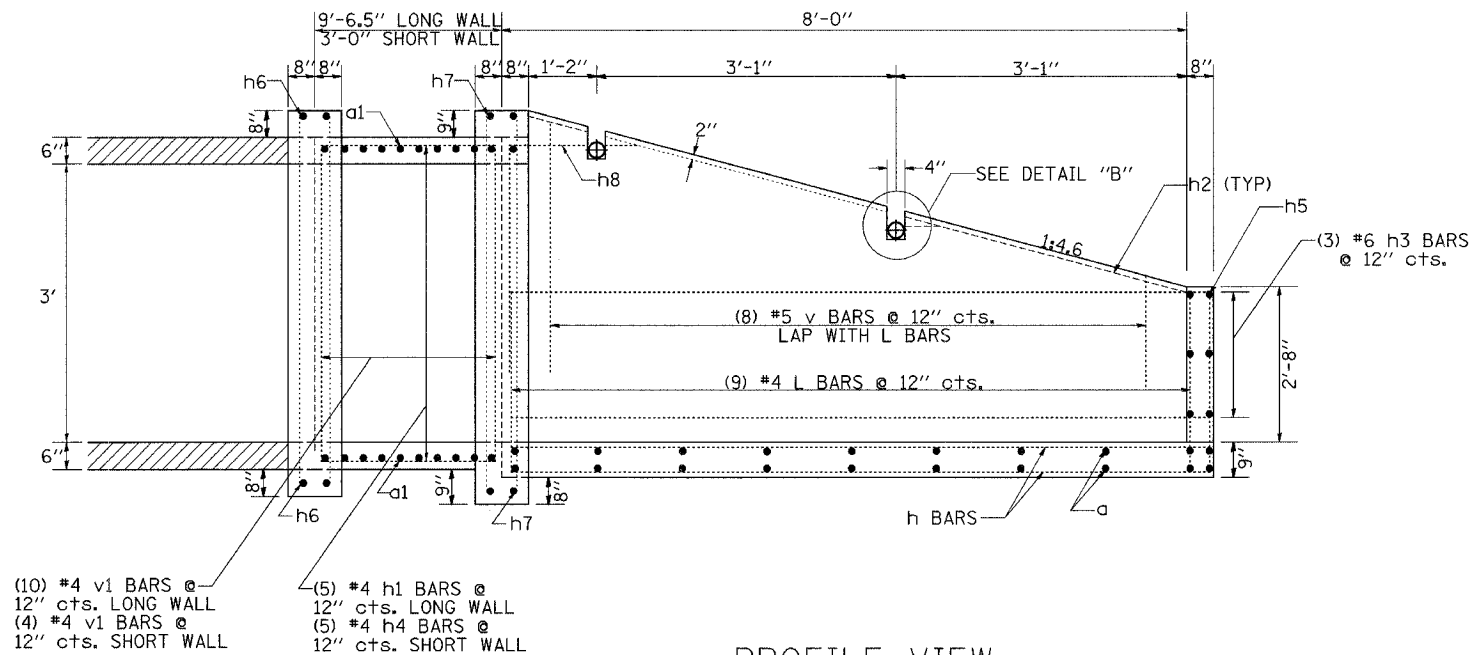
F.A.B. RTE.	SECTION	COUNTY	TOTAL SHEETS	SHEET NO.
553	120T-2	OGLE	59	35
STA.	TO STA.			
FED. ROAD DIST. NO.	ILLINOIS	FED. AID PROJECT		

# INLET BOX, SPECIAL STA 2131+29 RT

## BILL OF MATERIALS (ONE SECTION)

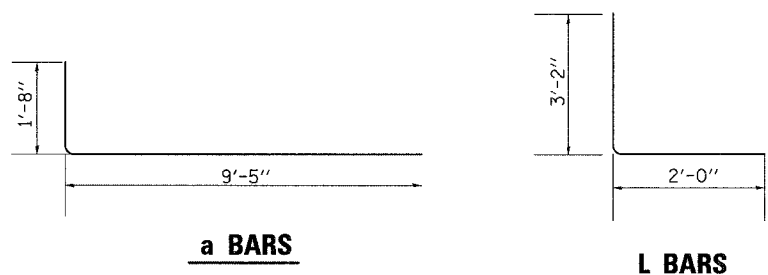
BAR	NUMBER	SIZE	LENGTH	SHAPE
a	20	#5	20'-5"	—
a1	40	#4	11'-1"	└
h	30	#7	8'-4"	—
h1	10	#4	9'-2"	—
h2	4	#6	3'-1"	—
h3	6	#6	8'-4"	—
h4	10	#4	2'-8"	—
h5	6	#6	20'-5"	—
h6	8	#6	7'-11"	—
h7	4	#6	22'-6"	—
h8	2	#6	4'-4"	—
L	33	#5	5'-2"	└
v	8	#5	5'-0"	—
v1	28	#4	3'-8"	—
v2	12	#4	5'-0"	—

DESCRIPTION	UNIT	QTY.
Class SI Concrete	CuYd	13.8
Reinforcement Bars	LBS	2161.1
3" I.D. Galv Steel Pipe	2ø	21'-1"
	7ø	8'-2"
3" Galv Pipe Caps	EACH	18
1/4" Galv Steel Plate (9" Nominal)	EACH	11
1/2"x4"x14" Galv Steel Plate	EACH	11
5/8"x9" Galv Steel Bolts	EACH	14
Expansion Bolts 1/2"	EACH	22



(10) #4 v1 BARS @ 12" cts. LONG WALL  
(4) #4 v1 BARS @ 12" cts. SHORT WALL  
(5) #4 h1 BARS @ 12" cts. LONG WALL  
(5) #4 h4 BARS @ 12" cts. SHORT WALL

PROFILE VIEW



### GENERAL NOTES:

- Slope flow line of the extension at the same rate as the flow line of the box.
- Bolts, Nuts, and Washers shall be in accordance with Article 710.11 of the standard specification and shall be galvanized.
- The contract unit price "Each" for Inlet Box, Special shall be of precast construction. It shall also include the Class SI Concrete for the Collar, Galvanized Pipe, Bolts, Nuts, Washers, Steel Plates.
- Steel pipes shall conform to A.S.T.M. A-53 (Type E or S) Grade B, Schedule 40, and shall be galvanized conforming to A.S.T.M. A-120. Contractor shall field verify pipe length.
- Steel Plates shall conform to AASHTO M-183 and shall be galvanized conforming to AASHTO M-111.
- SEE PLAN AND PROFILE SHEET FOR MORE INFORMATION  
SEE CULVERT LOCATION PLANS FOR MORE INFORMATION
- U-BOLTS WILL NOT BE USED IN PLACE OF THE GALVANIZED STEEL BOLTS.
- GALVANIZED STEEL PLATE AND GALVANIZED PIPE CAPS ARE REQUIRED.

## INLET BOX, SPECIAL