

F.A.P. RTE.	SECTION	COUNTY	TOTAL SHEETS	SHEET NO.
311	5 BR-1	LASALLE	32	1

STATE OF ILLINOIS
 DEPARTMENT OF TRANSPORTATION
 DIVISION OF HIGHWAYS
**PROPOSED
 HIGHWAY PLANS**

FAP ROUTE 311 (IL 71)
 SECTION 5 BR-1
 PROJECT ACBRF-0311(033)
 LASALLE COUNTY

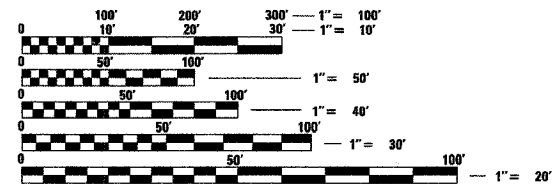
C - 93 - 053 - 04
 STRUCTURE REPLACEMENT

FOR INDEX OF SHEETS, SEE SHEET NO. 2
 FOR LIST OF HIGHWAY STANDARDS, SEE SHEET NO. 2

P93-018-04
 D93-050-04



TRAFFIC DATA
 ADT: IL 71
 2003 = 6400 PV = 85.9%
 2007 = 7400 SU = 4.7%
 MU = 9.4%
 FUNCTIONAL CLASSIFICATION
 OTHER PRINCIPAL ARTERIAL



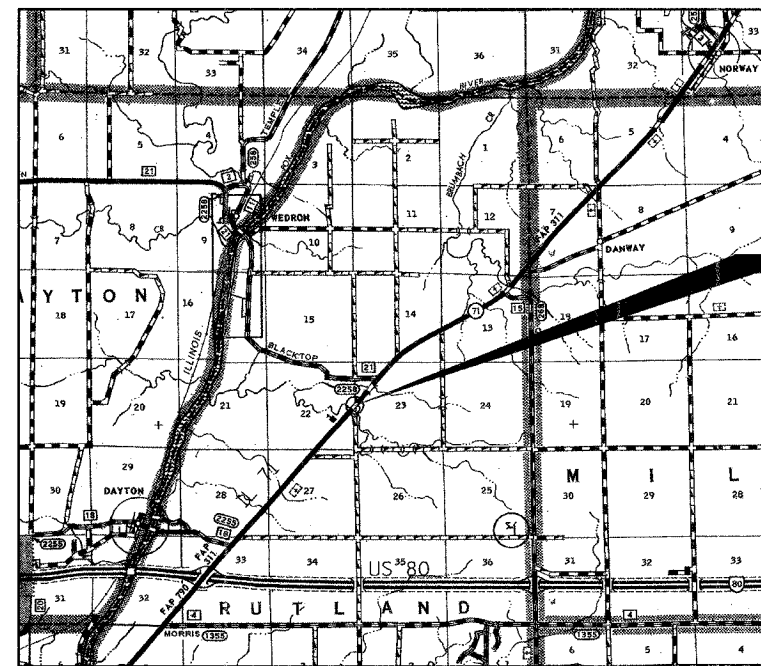
FULL SIZE PLANS HAVE BEEN PREPARED USING STANDARD ENGINEERING SCALES. REDUCED SIZED PLANS WILL NOT CONFORM TO STANDARD SCALES. IN MAKING MEASUREMENTS ON REDUCED PLANS, THE ABOVE SCALES MAY BE USED.

MICROFILMED _____
 REEL NUMBER _____
 AWARDED _____
 RESIDENT ENGINEER _____
 AS BUILT CHANGES WERE MADE
 ON THE FOLLOWING SHEETS _____

J.U.L.I.E.
 JOINT UTILITY LOCATION INFORMATION FOR EXCAVATION
 1-800-892-0123

DISTRICT 3 NO. (815) 434-6131

PROJECT ENGINEER: DAVE BRWIAK
 UNIT CHIEF: BRAD DUNCAN
 TOWNSHIP: RUTLAND

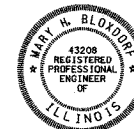


LOCATION MAP
 NOT TO SCALE

GROSS LENGTH = 1082 FT. = 0.20 MI.
 NET LENGTH = 1082 FT. = 0.20 MI.

PROPOSED CULVERT

SECTION 5BR-1 INCLUDES:
 BRIDGE REPLACEMENT:
 REPLACE SN 050-0067 WITH
 TRIPLE 11'x9'x100' BOX CULVERT
 W/ CAST-IN-PLACE HEADWALLS
 PR SN 050-2043 (STA 260+23)
 RESURFACING FROM STA 255+74
 TO STA 265+05 AND TR 366 (E 22ND
 ROAD) STA 8+49 TO STA 10+00



Mary H. Bloyde
 Illinois-Professional No. 43208
 Expires 11-30-2007
 Date: 4/12/06

STATE OF ILLINOIS
 DEPARTMENT OF TRANSPORTATION
 DIVISION OF HIGHWAYS
 SUBMITTED August 13 20 07
Eric E. Harshbarger
 DEPUTY DIRECTOR OF HIGHWAYS, REGION ENGINEER
 October 12, 20 07
Eric E. Harshbarger
 ENGINEER OF DESIGN AND ENVIRONMENT
 October 12, 20 07
Milton R. Seas P.E.
 DIRECTOR OF HIGHWAYS, CHIEF ENGINEER

PRINTED BY THE AUTHORITY
 OF THE STATE OF ILLINOIS