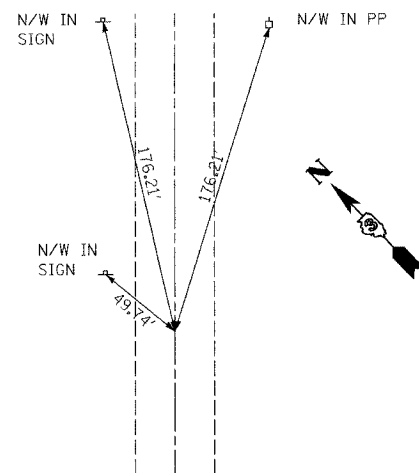
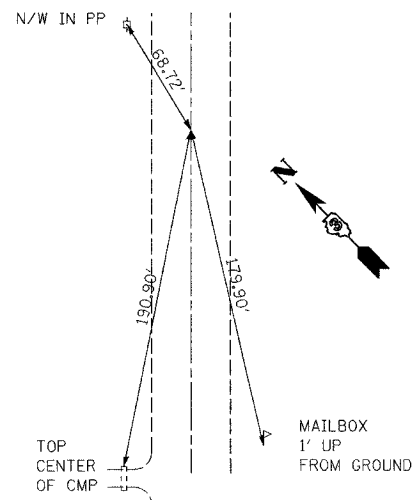


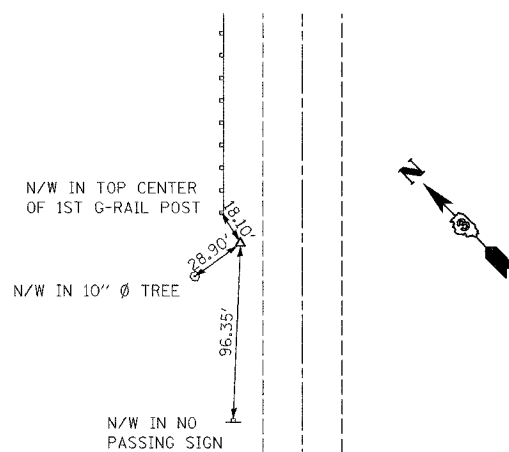
F.A.P. RTE.	SECTION	COUNTY	TOTAL SHEETS	SHEET NO.
311	5BR-1	LASALLE	32	9
STA.		TO STA.		
FED. ROAD DIST. NO.		ILLINOIS FED. AID PROJECT		



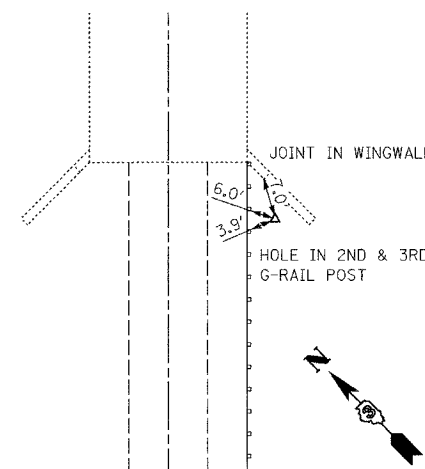
POT STA 255+04.63
FA 97 = IL RT 71



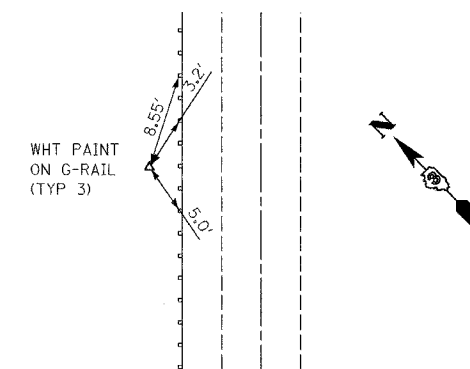
POT STA 265+97.46
FA 97 = IL RT 71



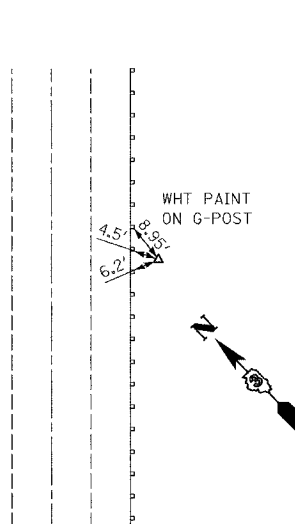
POINT NO 1001
FA 97 (IL 71) STA 257+75.71
20.9' LT



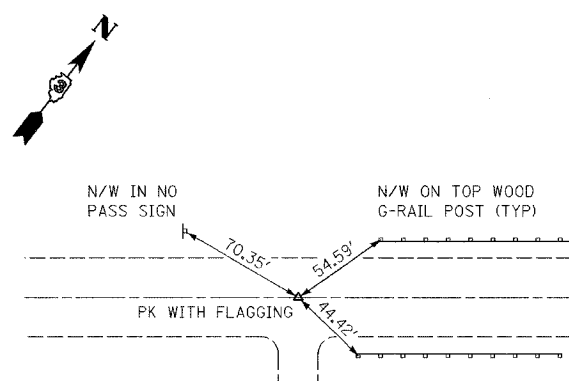
POINT NO 1002
FA 97 (IL 71) STA 259+96.87
21.6' RT



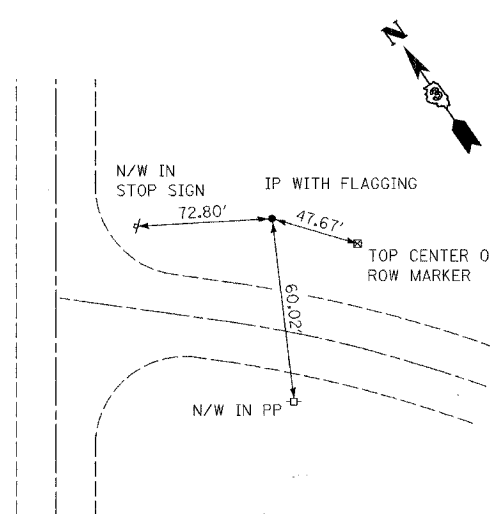
POINT NO 1003
FA 97 (IL 71) STA 260+70.02
21.7' LT



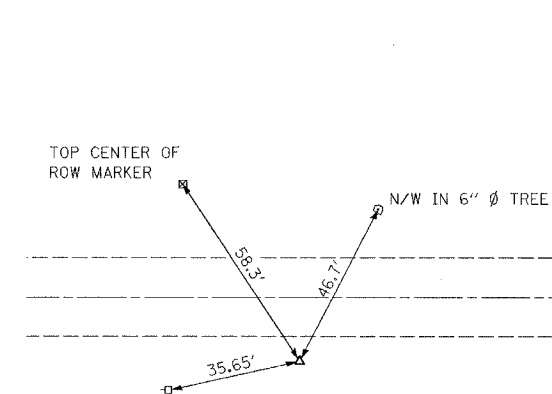
POINT NO 1004
FA 97 (IL 71) STA 261+52.94
22.4' RT



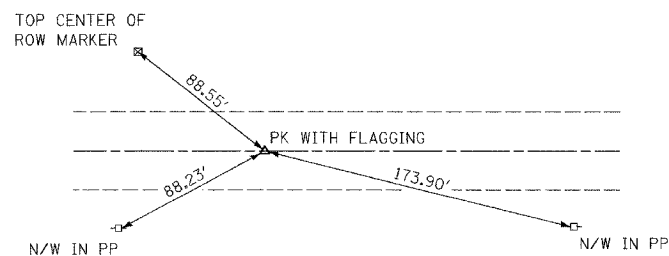
PC STA 0+00.00 (SURVEY) = PC STA 10+00.00 (DESIGN)
CR 22 E (TR 366/E 22ND ST)



PI STA 1+21.65 (SURVEY) = PI STA 8+78.35 (DESIGN)
CR 22 E (TR 366/E 22ND ST)



POINT NO 1000
CR 22 E (TR 366/E 22ND ST)
STA 1+80.51, 15.7' RT (SURVEY) =
STA 8+19.49, 15.7' LT (DESIGN)



PT STA 2+33.00 (SURVEY) = PT STA 7+77.00 (DESIGN)
CR 22 E (TR 366/E 22ND ST)

REVISIONS	
NAME	DATE

COOMBE-BLOXDORF P.C.
Engineers / Land Surveyors
Springfield, Illinois
Design Firm License No. 184-002703

ILLINOIS DEPARTMENT OF TRANSPORTATION

TIES
IL ROUTE 71 OVER UNNAMED STREAM
FAP RT 311, SECTION 5BR-1
LASALLE COUNTY

SCALE: VERT.
HORIZ.
DATE: 01/13/06

DRAWN BY
CHECKED BY