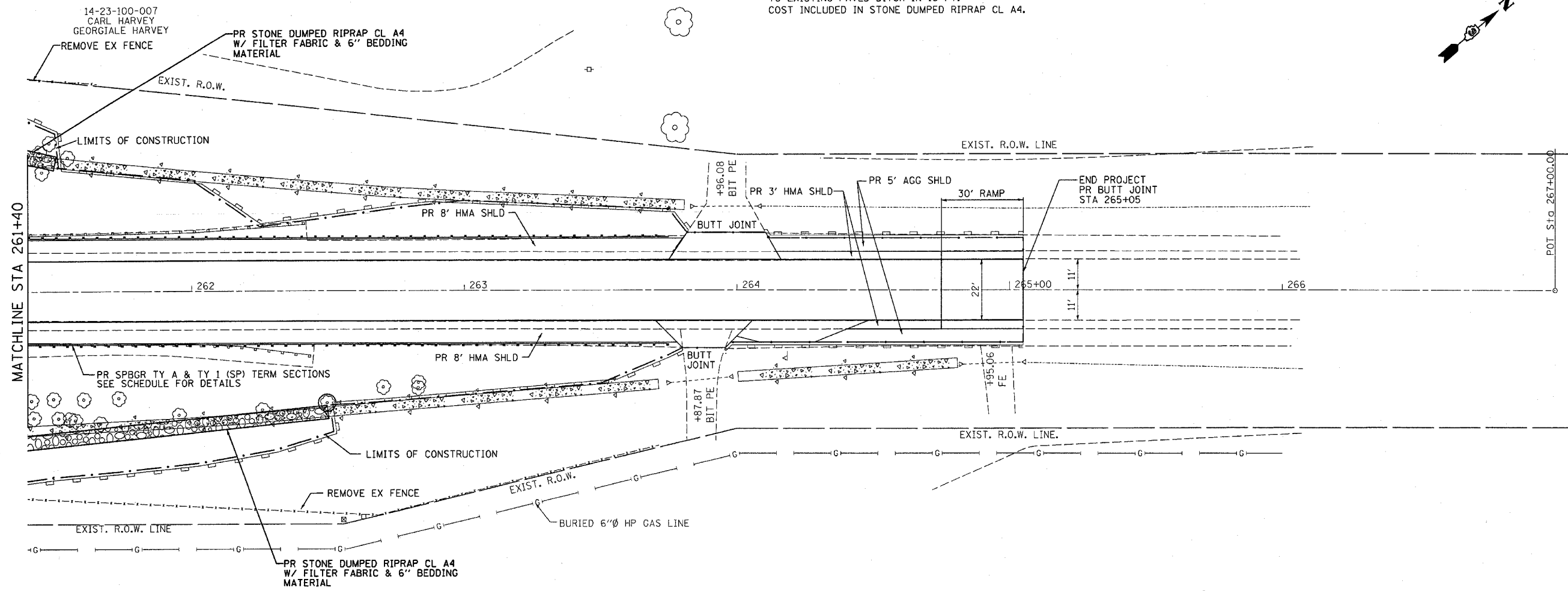
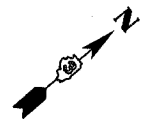
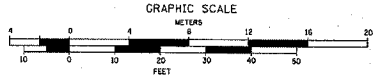


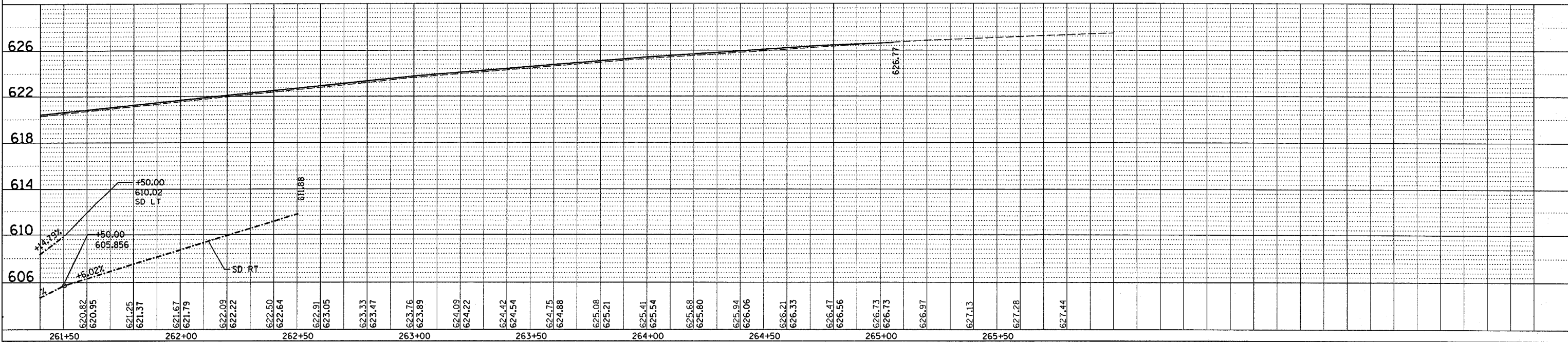
F.A.P. RTE.	SECTION	COUNTY	TOTAL SHEETS	SHEET NO.
311	5 BR-1	LASALLE	32	13
STA. 261+40.00 TO STA. 266+00.00				
FED. ROAD DIST. NO. ILLINOIS FED. AID PROJECT				

NOTE B:  
CONSTRUCT TRANSITION OF STONE DUMPED RIPRAP  
TO EXISTING PAVED DITCH IN 10 FT.  
COST INCLUDED IN STONE DUMPED RIPRAP CL A4.



DATE	
BY	
PLAN	
SURVEYED	
ALIGNED	
GRADES CHECKED	
RT. OF WAY CHECKED	
ADD FILE NAME	

DATE	
BY	
PROFILE	
SURVEYED	
GRADES CHECKED	
RT. NOTED	
STRUCTURE NOTATIONS CHECKED	



STA 261+40 TO STA 266+00

\*DATE: TIME:  
c:\pwworkspace\1804\consul1\1\roadway\13\plan\prof11e.dgn