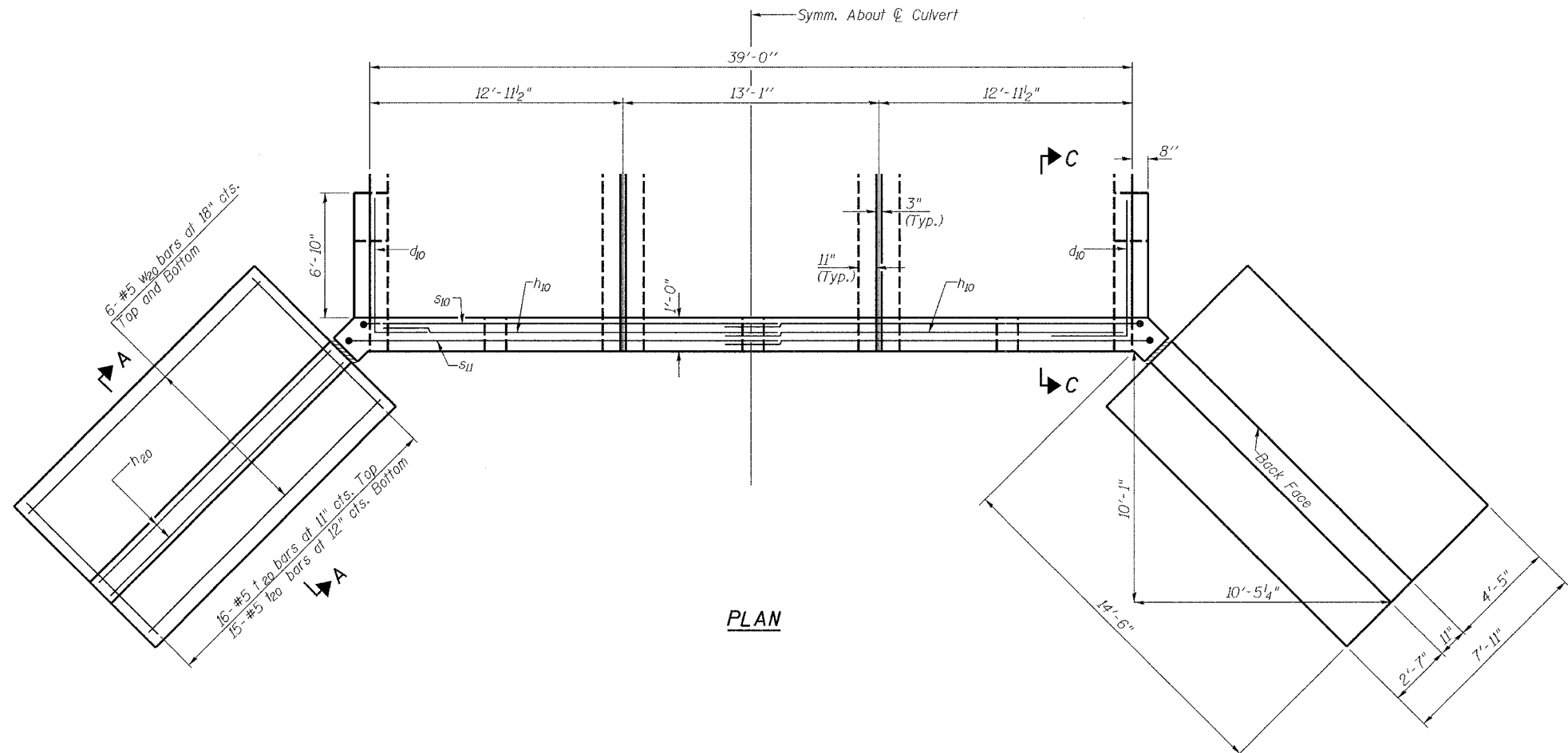
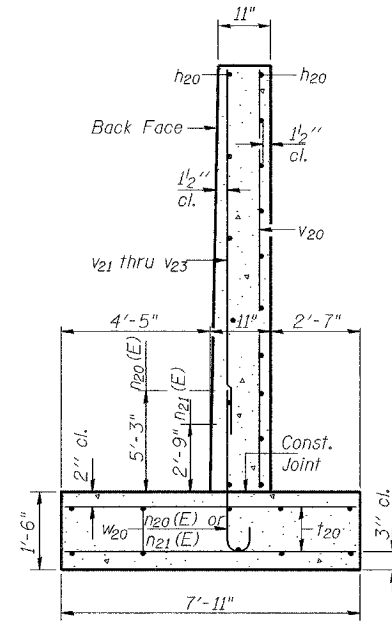


ROUTE NO.	SECTION	COUNTY	TOTAL SHEETS	SHEET NO.	SHEET NO. 5 8 SHEETS
FAP 311 (IL 71)	5BR-1	LASALLE	32	20	
FED. ROAD DIST. NO. 7		ILLINOIS		FED. AID PROJECT	

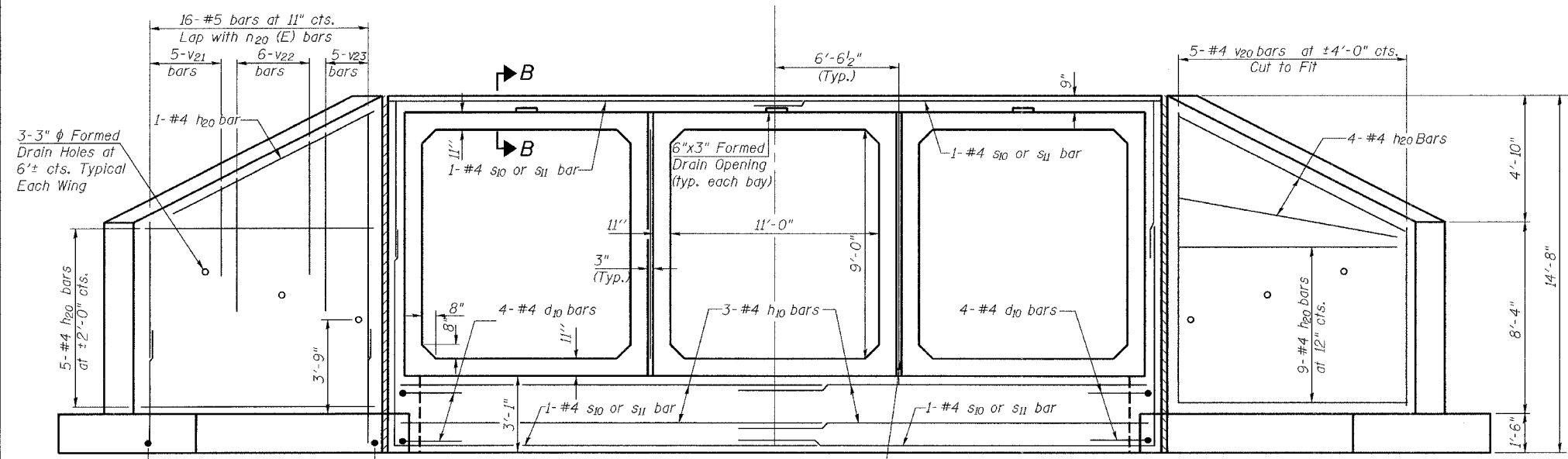
Contract #66449



PLAN



SECTION A-A
Maximum Soil Pressure = 1.8 tsf
(at toe of wingwall)



END ELEVATION

REINFORCEMENT
BACK FACE

REINFORCEMENT
FRONT FACE

Min. Bar Laps
#4 = 1'-4"
#5 = 1'-8"

Work this sheet with sheet 6 of 8.

ILLINOIS DEPARTMENT OF TRANSPORTATION	
SHEET TITLE TRIPLE 11'-0" x 9'-0" BOX CULVERT ELEVATION & SECTIONS	
PROJECT IL ROUTE 71 OVER UNNAMED STREAM FAP ROUTE 311 SECTION 5BR-1 LASALLE COUNTY STATION 260+23 STRUCTURE NUMBER 050-2043	PROJECT NO. 05025-2 SCALE DATE 01/13/06 DRAWN BY CFC CHECKED BY KPS/MCB DRAWING NO.
COOMBE-BLOXDORF P.C. Engineers / Land Surveyors Springfield, Illinois	
Design Firm License No. 184-002703	5 OF 8 SHTS

FILE NAME = ...sheet-5-elevation-sections.dgn
PLT0000 11/17/06
USER NAME = DFC