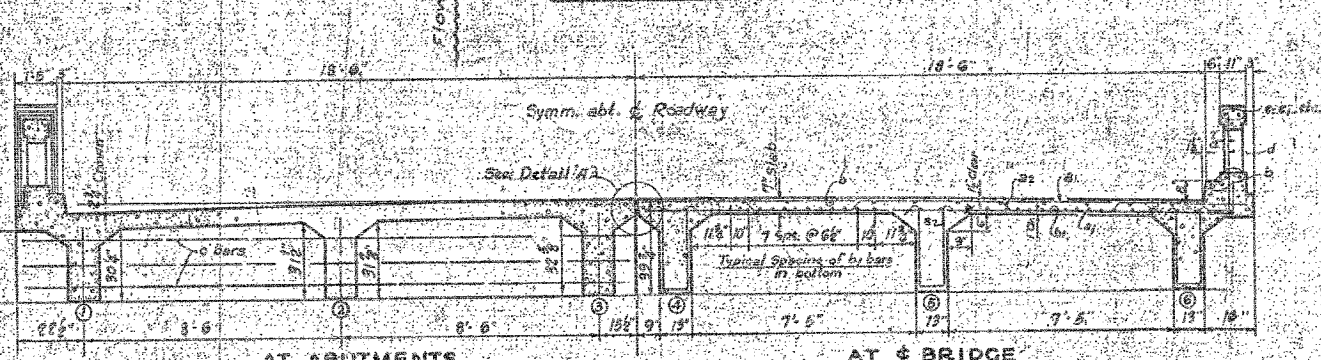
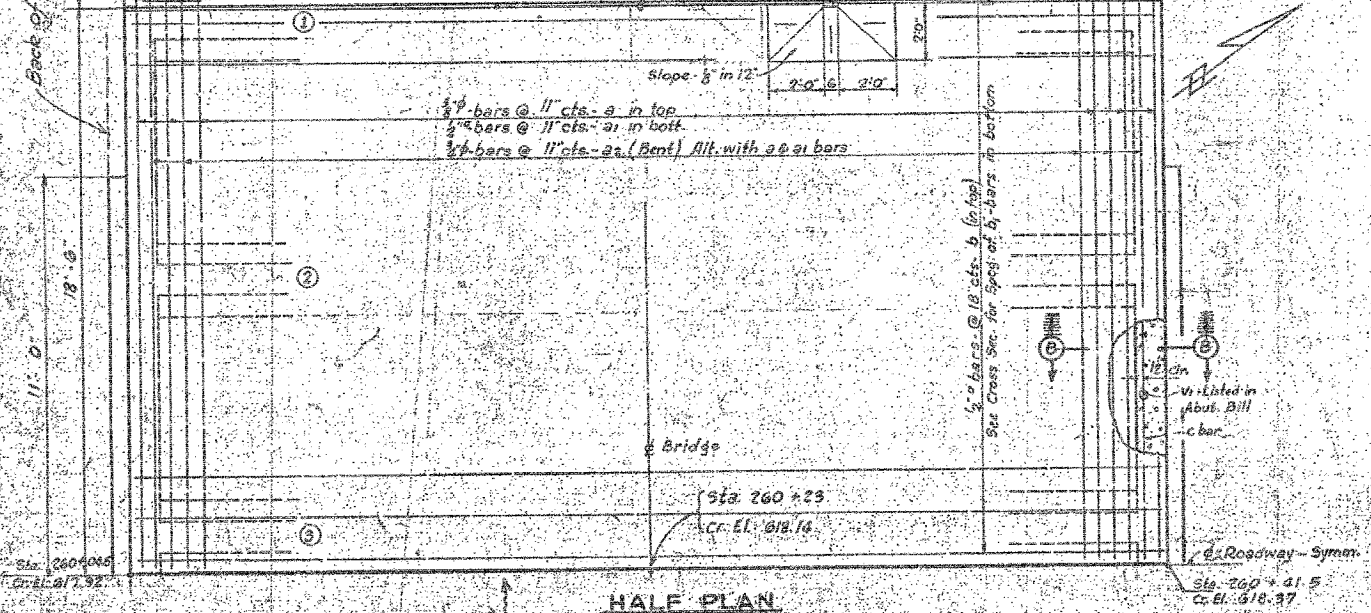
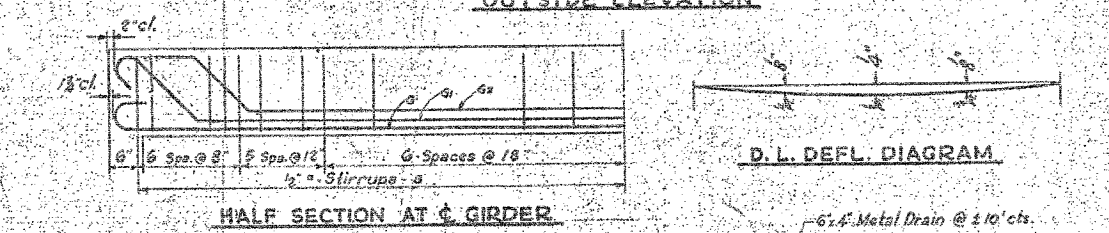
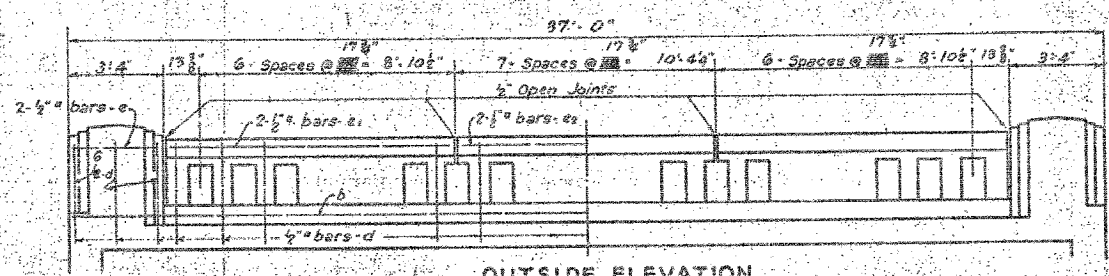


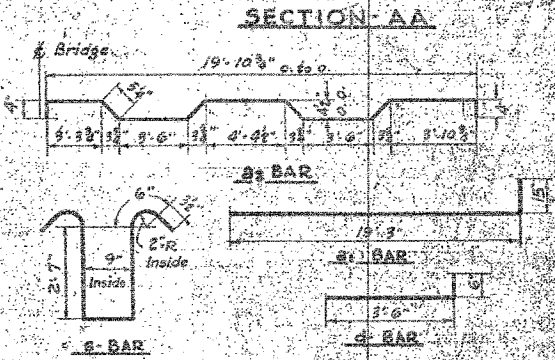
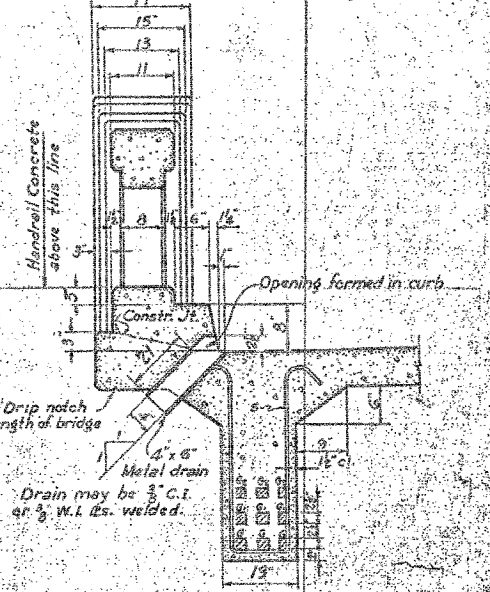
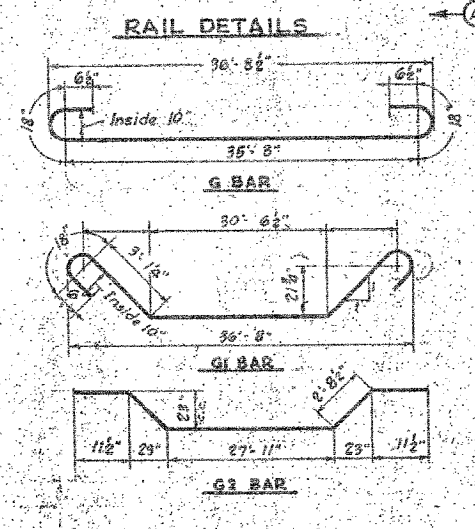
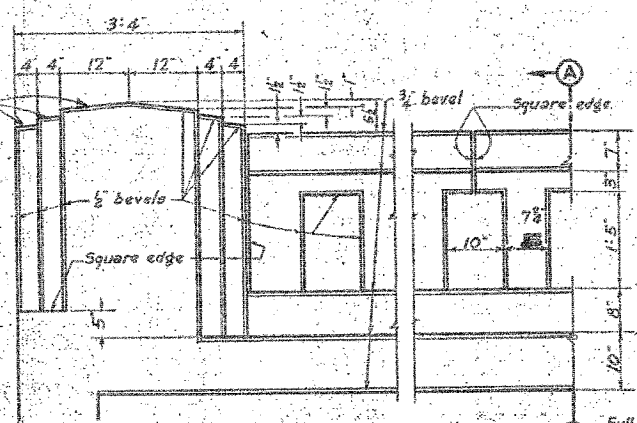
STATE OF ILLINOIS  
DEPARTMENT OF PUBLIC WORKS & BUILDINGS  
DIVISION OF HIGHWAYS

ROAD DISTRICT NO.	SECTION	COUNTY	TOTAL SHEETS	SHEET NO.
FA 97	5B-1	La Salle	7	4
FED. ROAD DIST. NO. 7	ILLINOIS	FED. AID PROJECT	1975	SHEET NO.
				3 SHEETS

Sheet 24 of 32



COMPUTED	J. H. Alexander	EXAMINED	7-27-40
CHECKED	R. C. Brown	DRAWN	J. H. G. J. P. Fisher
CHECKED	J. H. G. J. P. Fisher	CHECKED	J. H. G. J. P. Fisher
SPECIAL	ASSEMBLED	APPROVED	J. H. G. J. P. Fisher



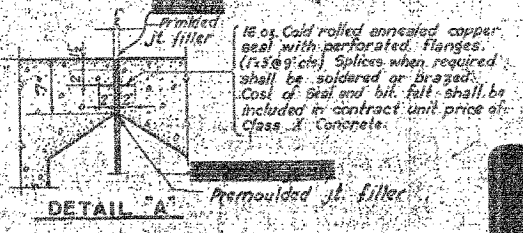
BILL OF MATERIAL

BAR NO.	SIZE	LENGTH
a	82	19'-9"
a1	82	20'-6"
a2	80	21'-0"
b	64	19'-3"
b1	112	19'-3"
c	12	20'-0"
d	66	4'-0"
e	8	3'-0"
e1	8	3'-3"
e2	4	10'-0"
G	18	39'-9"
G1	18	40'-9"
G2	18	35'-3"
G	210	7'-6"

Handrail Concrete	Cu. Yds.	4.2
Class X Concrete	Cu. Yds.	67.9
Reinforcement Bars	Lbs.	20680
Floor Drains	Each	8

**-GENERAL NOTES-**  
Class X Concrete shall be used thruout.  
The concrete floor shall be finished in accordance with Art 57.3(a) of the Std. Specifications.  
Bridge Camber is indicated by the crown elevations shown.  
Premeolded joint filler shall conform to Art. 105.65 to 105.69 inclusive of the Supplemental Specifications.  
The hubguard and handrail shall not be poured until after the falsework has been removed.  
The exposed surfaces of floor drains shall receive two field coats of white lead paint. The Contractor shall furnish and apply the paint.



FOR INFORMATION ONLY

PROJECT 197  
FA: RTE. 97 - SEC. 5B-1  
LA SALLE COUNTY  
STA. 260+23