

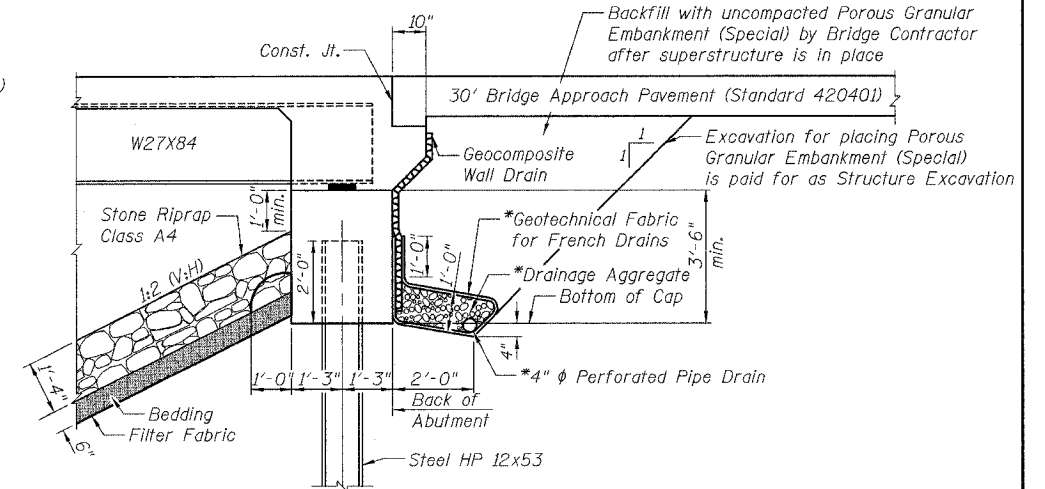
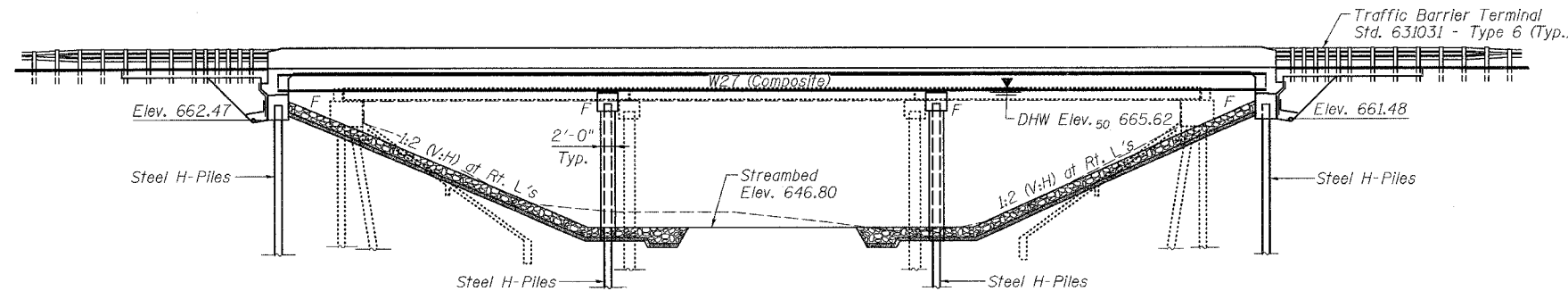
Bench Mark: Brass monument on top of N.W. wingwall Sta. 285+25.78, 18.5' Lt. Elev. 666.03

Existing Structure: Structure No. 038-0181, built in 1982 and rehabilitated in 1996, is a three span PPC Deck Beam bridge, 120'-11" bk. to bk. abutments by 36'-0" out to out. To be replaced with three span continuous steel beam bridge with reinforced concrete deck on pile bent piers and integral abutments. Existing structure to be removed in stages while maintaining one lane of traffic.

No Salvage.

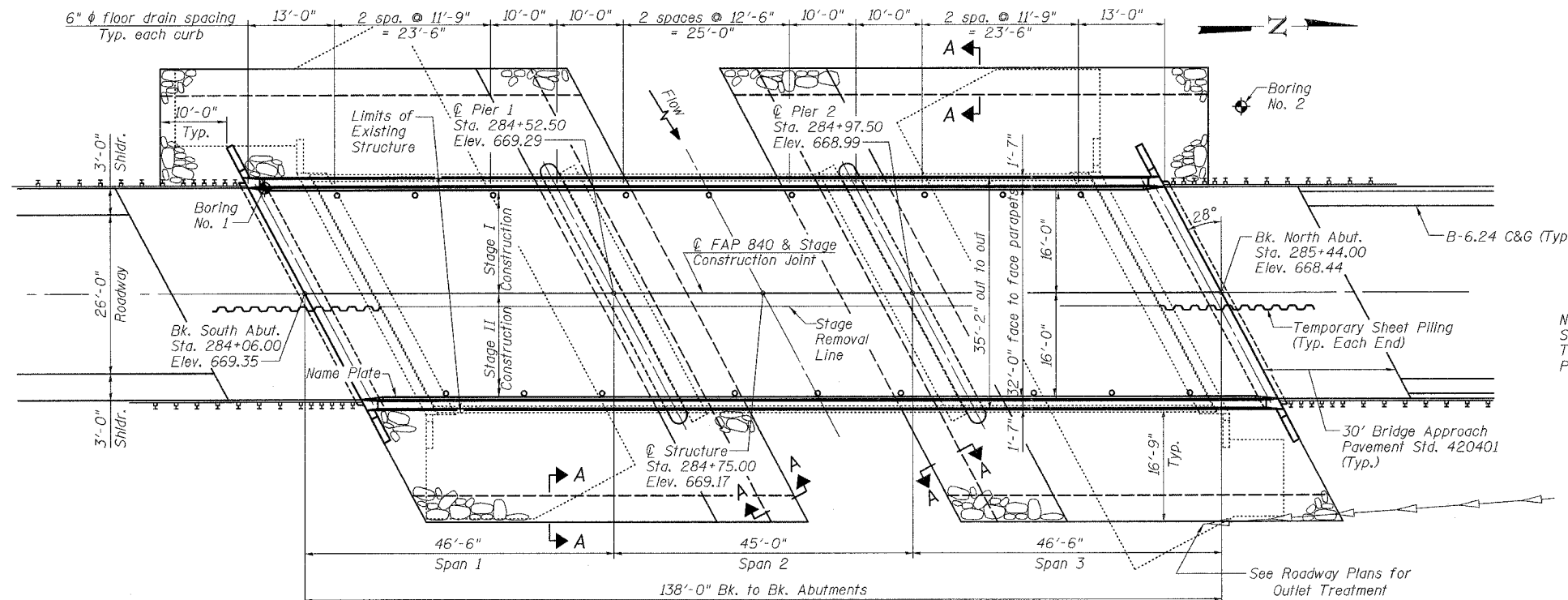
ROUTE NO.	SECTION	COUNTY	TOTAL SHEETS	SHEET NO.	SHEET NO. 1
FAP 840	123BR-2	IROQUOIS	67	18	20 SHEETS
FED. ROAD DIST. NO. 7	ILLINOIS	FED. AID PROJECT			

Contract #66612

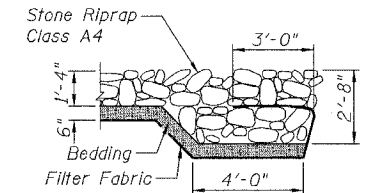


PIPE UNDERDRAIN AND RIPRAP DETAIL
*Included in the cost of Pipe Underdrains for Structures.

All drainage system components shall extend to 2'-0" from the end of each wingwall except an outlet pipe shall extend until intersecting with the side slopes. Pipes at the north abutment shall be turned toward the channel and shall exit the slope within the riprap area. The pipes shall drain into concrete headwalls. (See Article 601.05 of the Standard Specifications and Highway Standard 601101)



NOTE: See Roadway Plans for Curb & Gutter, Traffic Barrier Terminals, and Approach Pavement details.

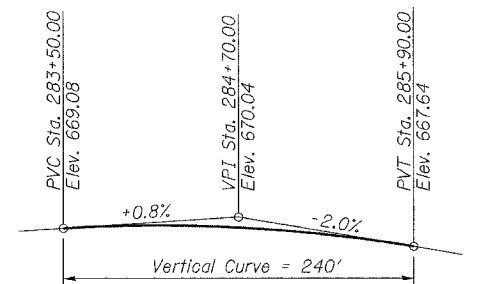


STATION 284+75.00
BUILT 2008 BY
STATE OF ILLINOIS
F.A.P. RT. 840 SEC. 123 BR-2
LOADING HS20
STRUCTURE NO. 038-0217

APPROVED
FOR STRUCTURAL ADEQUACY ONLY

Ralph E. Anderson (TJD)
ENGINEER OF BRIDGES AND STRUCTURES

NAME PLATE
See Std. 515001



DESIGN SCOUR ELEVATION TABLE

Design Scour Elevation (ft.)	South Abut.	Pier 1	Pier 2	North Abut.
	662.4	628.8	628.8	661.4

DESIGN STRESSES

FIELD UNITS
 $f_c = 3,500$ psi
 $f_y = 60,000$ psi (Reinforcement)
 $f_y = 50,000$ psi (AASHTO M270 Gr. 50W)

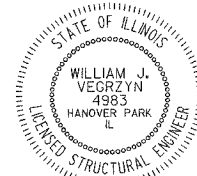
SEISMIC DATA

Seismic Performance Category (SPC) = A
 Bedrock Acceleration Coefficient (A) = 0.033 g
 Site Coefficient (S) = 1.2

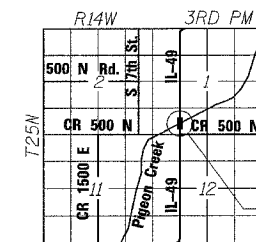
LOADING HS20-44

Allow 50#/sq. ft. for future wearing surface.

DESIGN SPECIFICATIONS
2002 AASHTO



William J. Vegrzyn 8/7/2007
Expires 11-30-08



rjngroup
Excellence through Ownership

200 West Front Street
Wheaton, IL 60187

ILLINOIS DEPARTMENT OF TRANSPORTATION

GENERAL PLAN AND ELEVATION
 IL RT. 49 OVER PIGEON CREEK
 FAP RTE 840 - SECTION 123 BR-2
 IROQUOIS COUNTY
 STATION 284+75.00
 STRUCTURE NO. 038-0217

DATE: 8/7/2007

DRAWN BY JMT
 CHECKED BY WJV