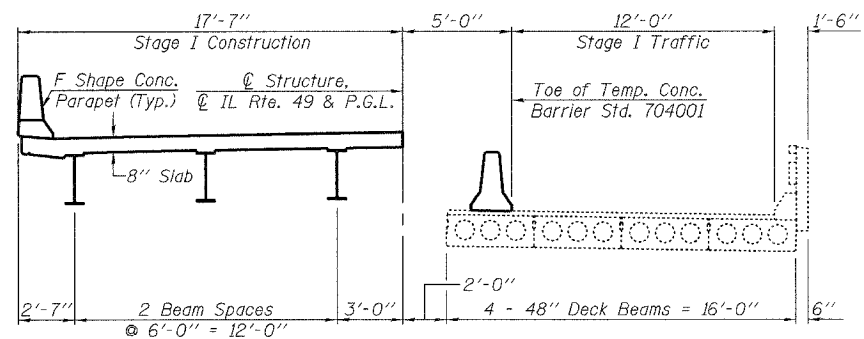
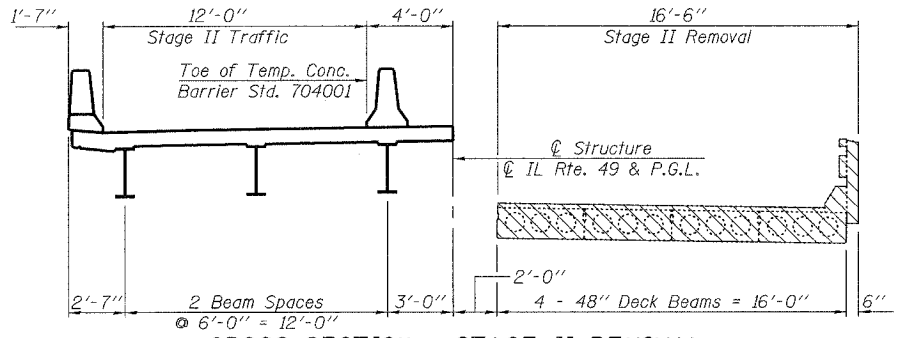


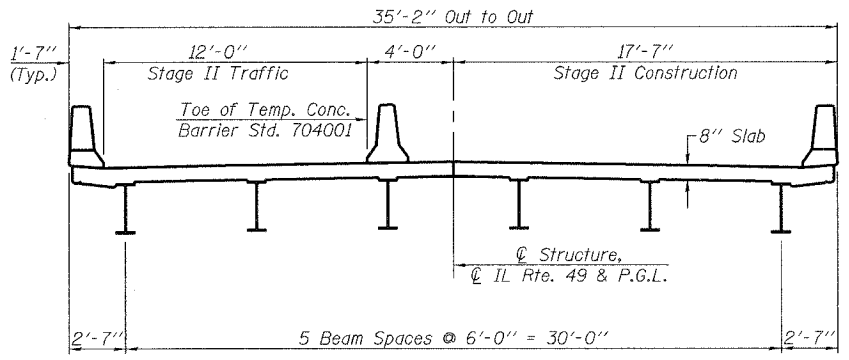
CROSS SECTION - STAGE I REMOVAL
(Looking North)



CROSS SECTION - STAGE I CONSTRUCTION
(Looking North)



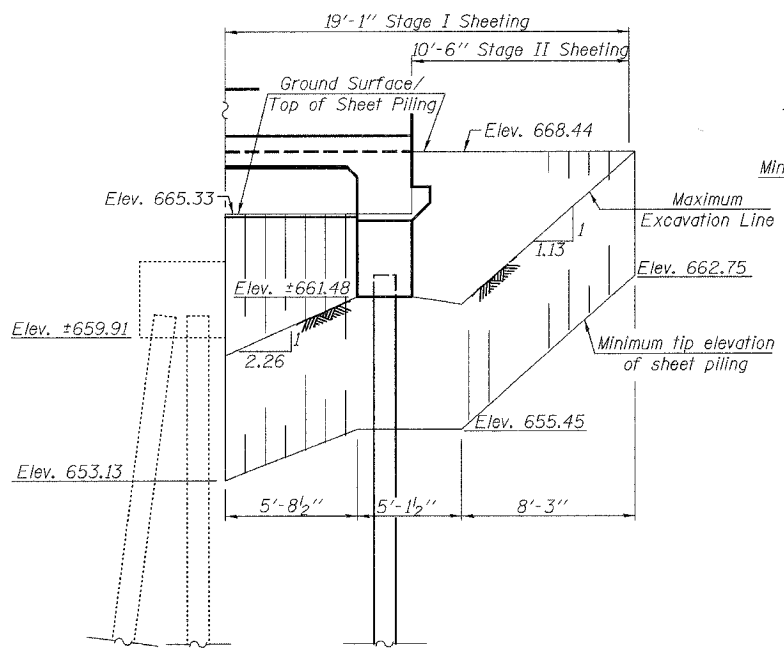
CROSS SECTION - STAGE II REMOVAL
(Looking North)



CROSS SECTION - STAGE II CONSTRUCTION
(Looking North)

SEQUENCE OF STAGE REMOVAL AND CONSTRUCTION OF TEMPORARY SHEET PILING:

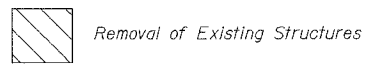
1. Install Temporary Sheet Piling for Stage I Construction.
2. Remove Stage I Superstructure.
3. Sawcut abutments and piers at Stage Removal Line.
4. Remove Stage I portions of abutments and piers.
5. Proceed with Stage I Construction.
6. Adjust Temporary Sheet Piling for Stage II Construction.
7. Remove Stage II Superstructure.
8. Remove Stage II portions of abutments and piers.
9. Proceed with Stage II Construction.
10. Remove Temporary Sheet Piling when Stage II Construction is complete.



TEMPORARY SHEET PILING - NORTH ABUTMENT

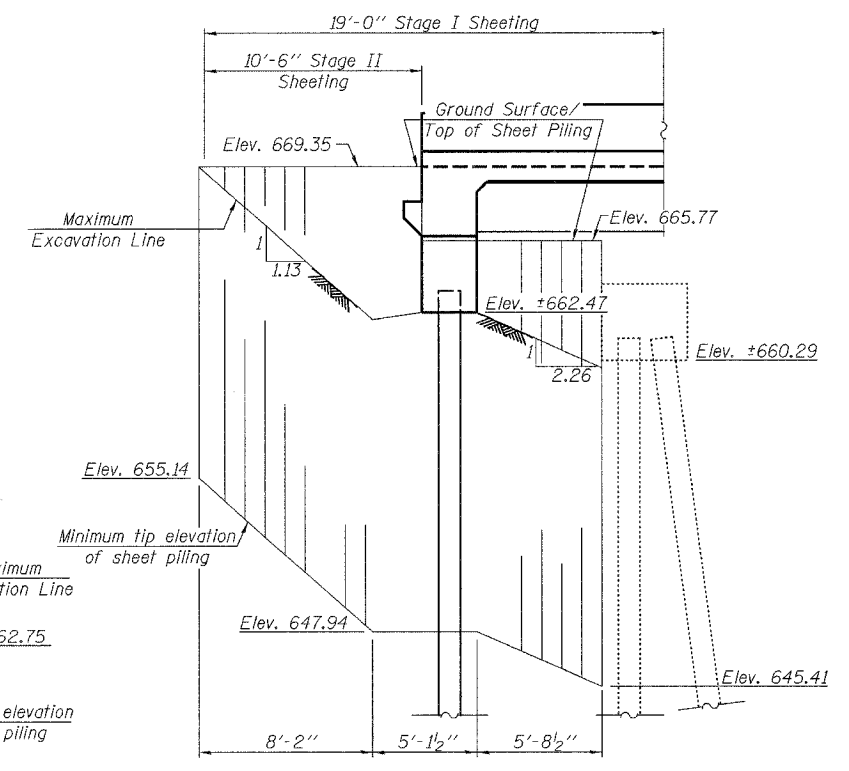
Slopes and Distances shown parallel to roadway centerline. Required Section Modulus for Temporary Sheet Piling must be greater than or equal to 3.0 in³/ft.

LEGEND:



NOTES:

Removal of existing Bituminous Wearing Surface, Bridge Rail, and Slope Wall is included with Removal of Existing Structures.
See Sheet 17 of 20 for Temporary Concrete Barrier Details.
Pay Item for Temporary Concrete Barrier is included with Roadway Plans.
If the Contractor chooses to alter the temporary cantilevered sheet piling design requirements shown on the plans, a design submittal including plan details and calculations will be required for review and acceptance by the Engineer.



TEMPORARY SHEET PILING - SOUTH ABUTMENT

Slopes and Distances shown parallel to roadway centerline. Required Section Modulus for Temporary Sheet Piling must be greater than or equal to 10.0 in³/ft.

BILL OF MATERIAL

Item	Unit	Total
Temporary Sheet Piling	Sq. Ft.	560
Removal of Existing Structures	Each	1

rjngroup
Excellence through Ownership
200 West Front Street
Wheaton, IL 60187

ILLINOIS DEPARTMENT OF TRANSPORTATION
CONSTRUCTION STAGING AND
TEMPORARY SHEET PILE DESIGN
IL RT. 49 OVER PIGEON CREEK
FAP RTE 840 - SECTION 123 BR-2
IROQUOIS COUNTY
STATION 284+75.00
STRUCTURE NO. 038-0217
DATE: 8/7/2007
DRAWN BY: JMT
CHECKED BY: BLB