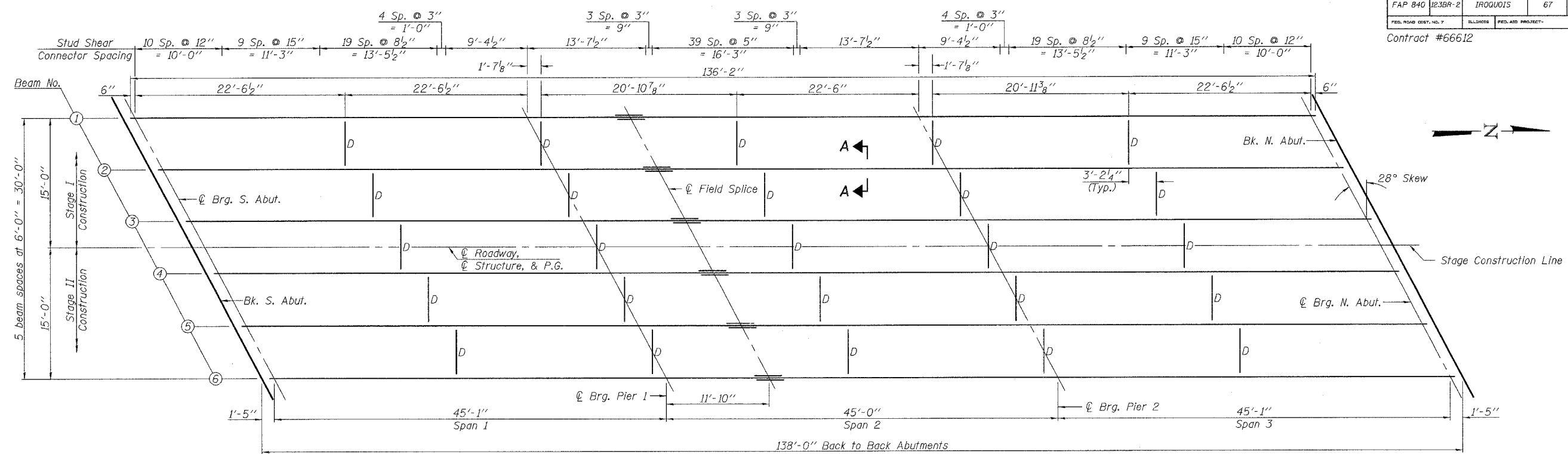
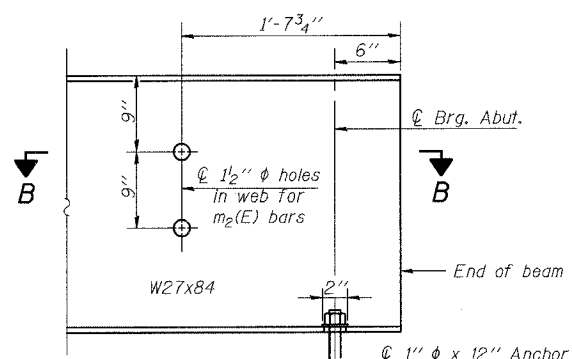


Contract #66612

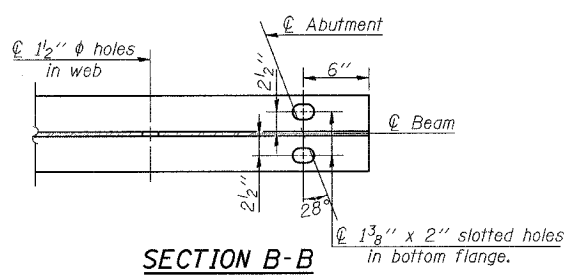


**FRAMING PLAN**

All beams shall be W27x84 AASHTO M 270, Grade 50W (NTR).



**TYP. END OF BEAM ELEVATION**

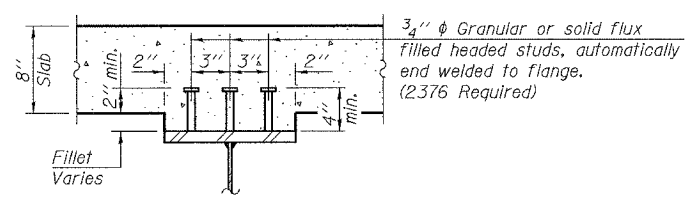


**SECTION B-B**

**TOP OF BEAM ELEVATIONS\*\***

Beam	Location	℄ Brg. S. Abut.	℄ Brg. Pier 1	℄ Splice	℄ Brg. Pier 2	℄ Brg. N. Abut.
Beam #1 Elev.		668.37	668.29	668.26	667.99	667.61
Beam #2 Elev.		668.49	668.38	668.35	668.07	667.67
Beam #3 Elev.		668.59	668.47	668.43	668.13	667.73
Beam #4 Elev.		668.59	668.46	668.42	668.11	667.68
Beam #5 Elev.		668.50	668.35	668.31	667.99	667.54
Beam #6 Elev.		668.39	668.23	668.18	667.85	667.38

\*\* Elevations are before any deflections and are to be used for fabrication only.



**SECTION A-A**

**NOTES**

- D denotes interior diaphragm.
- See Sheet 12 of 20 for Field Splice, Bearings, Diaphragm Details, and Moment and Reaction Tables.
- All diaphragms shall be installed as steel is erected and secured with erection pins and bolts except as otherwise noted. Individual cross frames or diaphragms at supports may be temporarily disconnected to install bearing anchor rods.
- Load carrying components designated "NTR" shall conform to the Supplemental Requirements for Notch Toughness, Zone 2.

<p>Excellence through Ownership</p> <p>200 West Front Street Wheaton, IL 60187</p>	<p>ILLINOIS DEPARTMENT OF TRANSPORTATION</p> <p>FRAMING PLAN IL RT. 49 OVER PIGEON CREEK FAP RTE 840 - SECTION 123 BR-2 IROQUOIS COUNTY STATION 284+75.00 STRUCTURE NO. 038-0217</p>
	<p>DATE: 8/7/2007</p> <p>DRAWN BY: JMT CHECKED BY: WJV</p>