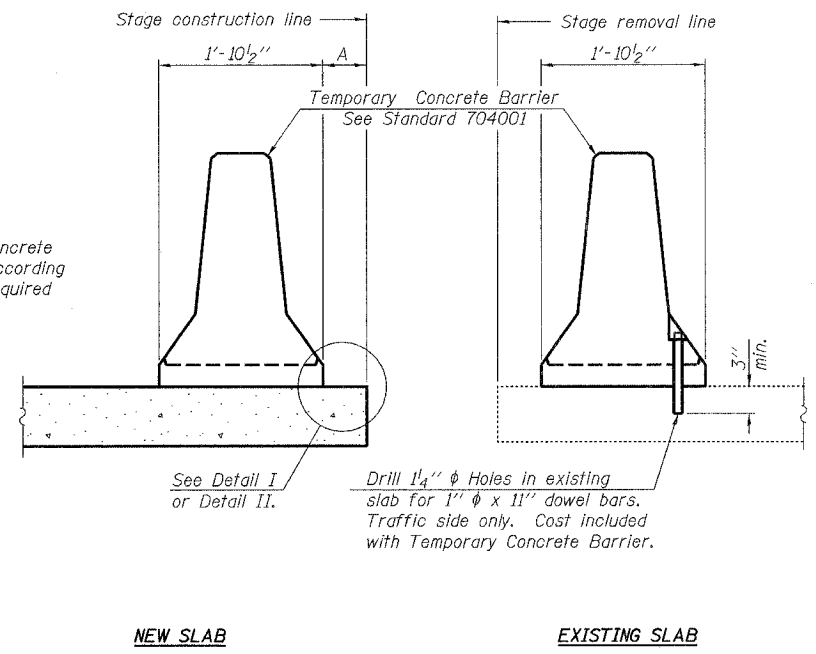


ROUTE NO.	SECTION	COUNTY	SHEET NO.	SHEET	SHEET
FAP 840	123BR-2	IROQUOIS	67	34	
FED. ROAD DIST. NO. 7	ILLINOIS	FED. AID PROJECT			

Contract #66612

SHEET NO. 17
20 SHEETS



When "A" is 3'-6" or less, the temporary concrete barrier shall be anchored to the new slab according to Detail I or Detail II. No anchorage is required when "A" is greater than 3'-6".

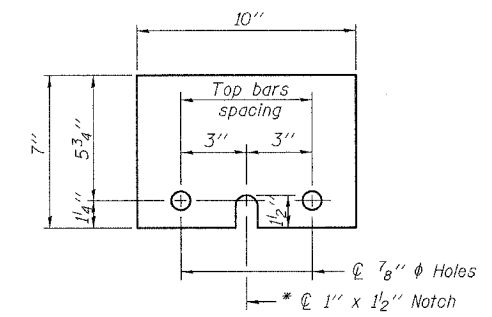
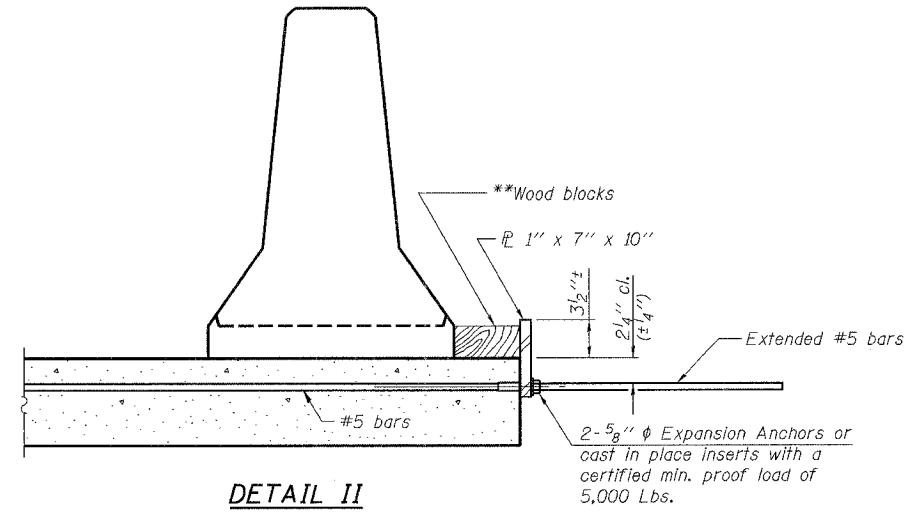
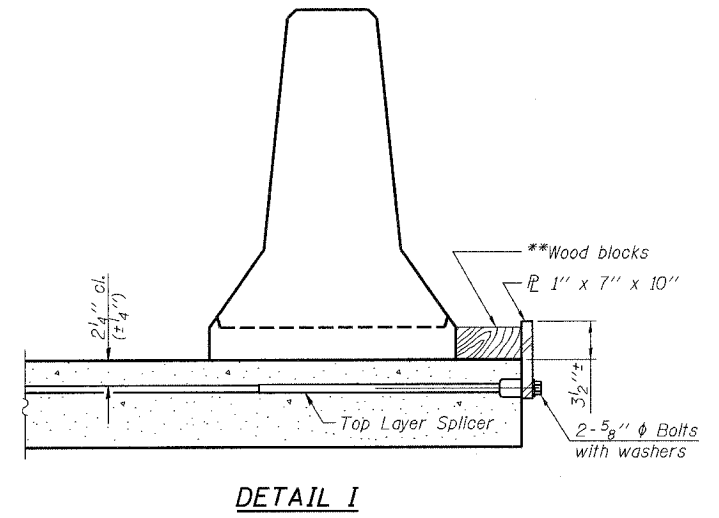
NOTES

Detail I - With Bar Splicer or Couplers:
Connect one (1) 1"x7"x10" steel PL to the top layer of couplers with 2-5/8" φ bolts screwed to coupler at approximate C of each barrier panel.

Detail II - With Extended Reinforcement Bars:
Connect one (1) 1"x7"x10" steel PL to the concrete slab with 2-5/8" φ Expansion Anchors or cast in place inserts spaced between the top layer of reinforcement at approximate C of each barrier panel.

Cost of anchorage is included with Temporary Concrete Barrier. The 1" x 7" x 10" plate shall not be removed until stage II construction forms and all reinforcement bars are in place and the concrete is ready to be placed.

SECTIONS THRU SLAB



STEEL RETAINER PL 1" x 7" x 10"
* Required only with Detail II

** Wood blocks may be omitted when required to provide minimum stage traffic lane width. When the wood blocks are omitted, the concrete barrier shall be in direct contact with the steel retainer plate.

R-27

11-1-06

<p>Excellence through Ownership</p> <p>200 West Front Street Wheaton, IL 60187</p>	<p>ILLINOIS DEPARTMENT OF TRANSPORTATION TEMPORARY CONCRETE BARRIER FOR STAGE CONSTRUCTION IL RT. 49 OVER PIGEON CREEK FAP RTE 840 - SECTION 123 BR-2 IROQUOIS COUNTY STATION 284+75.00 STRUCTURE NO. 038-0217</p>
	<p>DATE: 8/7/2007</p> <p>DRAWN BY: JMT CHECKED BY: WJV</p>

K:\11280287\Structure\Final Plans\Final Plans.dgn 8/27/2007