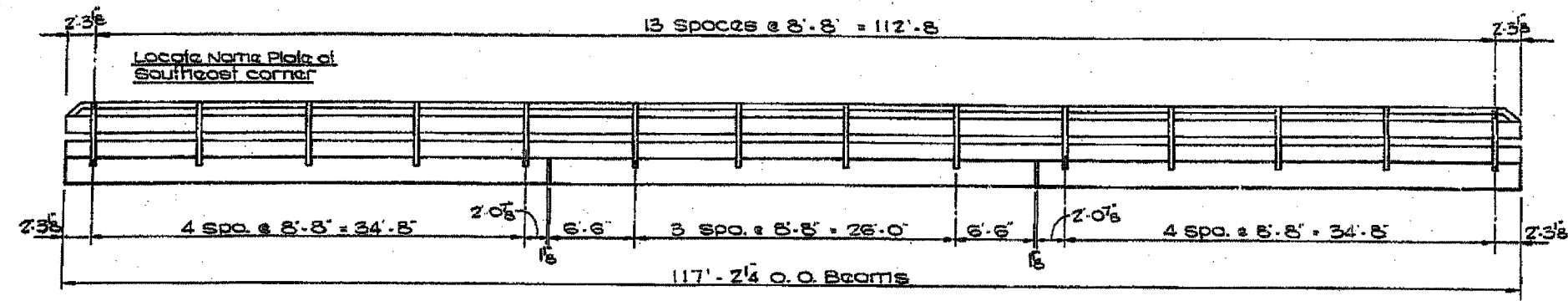


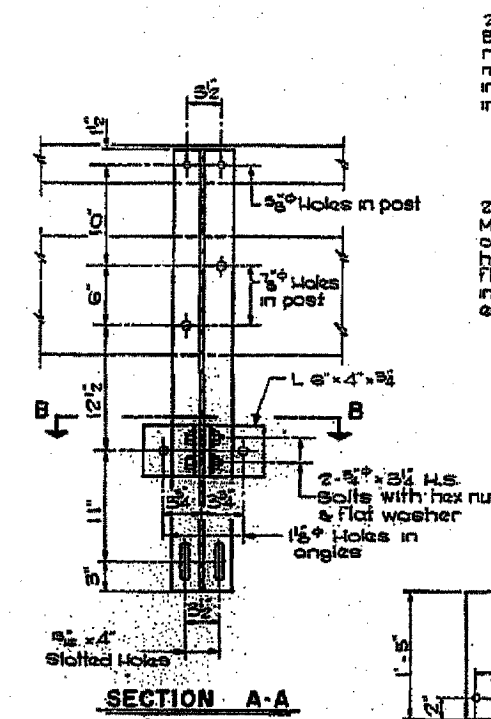
123 BR-1  
840 IROQUOIS



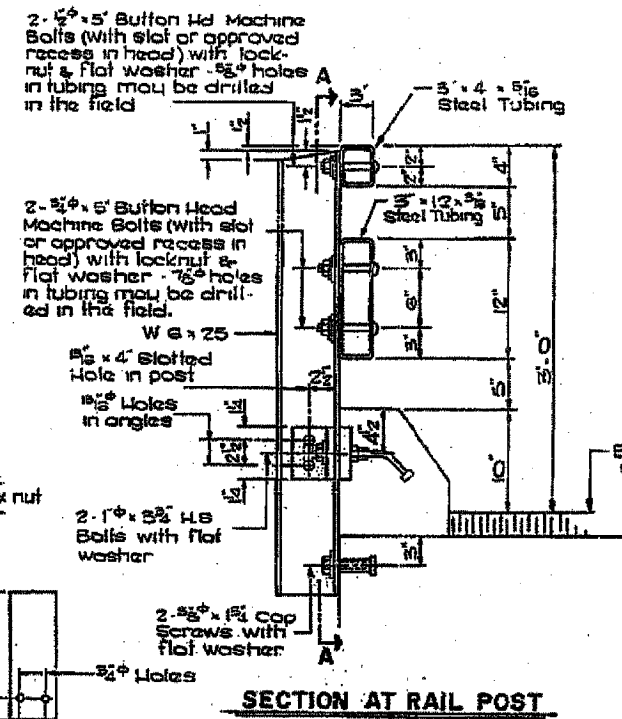
RAIL POST SPACING

NOTES:

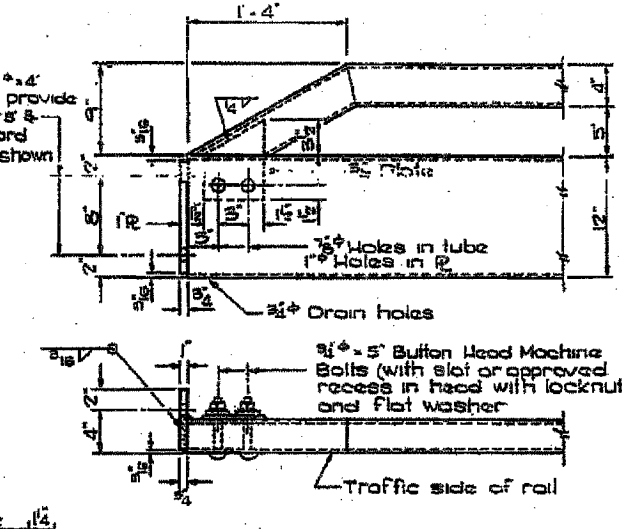
- Hollow structural steel tubing shall conform to the requirements of ASTM designation A-500 Grade B or of A-501 structural steel tubing.
- All other steel shapes and plates shall conform to the requirements of ASTM designation M-103 except posts and angles shall conform to AASHTO M-223 Grade 50.
- Bolts, cap screws, and nuts shall conform to the requirements of ASTM designation A-507 except for high strength bolts, nuts and washers noted which shall conform to AASHTO M-164.
- All bolts, nuts, cap screws, washers & lock washers shall be galvanized in accordance with ASTM designation M-292.
- All posts, railing, rail splices, anchor devices and angles shall be galvanized after shop fabrication in accordance with AASHTO designation M-111 & ASTM A-365. Galvanized rail shall not be painted.
- Railing shall be in accordance with Section 508 of the Standard Specifications, except as noted, and shall be paid for at the contract unit price per linear foot for STEEL RAILING, TYPE T.
- All field drilled holes shall be coated with an approved zinc rich paint before erection.
- The portion of the post flange in contact with concrete shall receive two coats of asphalt paint conforming to Sec. 714.05 Type B or place 1/2" fabric bearing pad between the post and concrete.
- The 1" high strength bolts used to connect the 6" x 4" angles to the posts shall be tightened in accordance with Article 502.4 (g) (2) of the Standard Specifications. The 1" high strength bolts connecting the angles to the concrete shall be tightened to a snug fit & given an additional 1/2 turn. The 5/8" cap screws in bottom of posts shall be tightened to a snug fit only.
- For multi-span bridges, sufficient 6" x 6" x 1/2" galvanized steel shims shall be provided to align rail between adjacent spans cast incidental to steel railing.



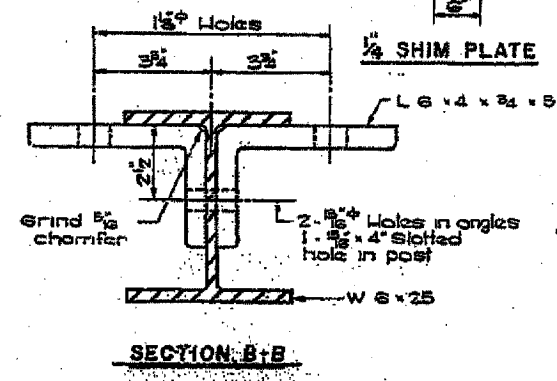
SECTION A-A



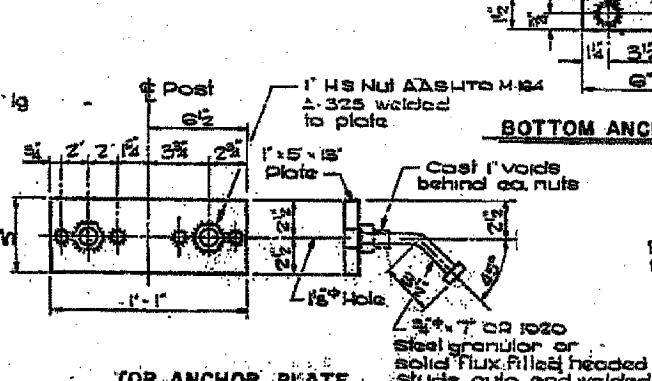
SECTION AT RAIL POST



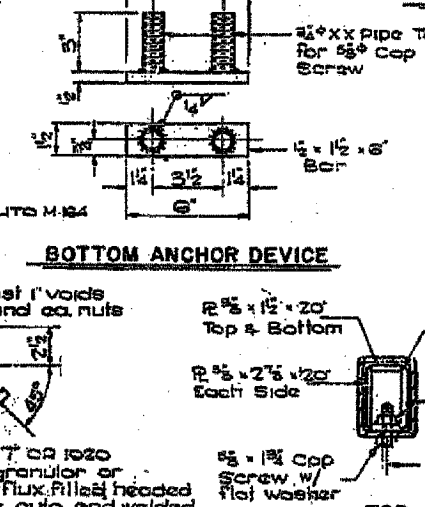
END OF RAIL DETAILS



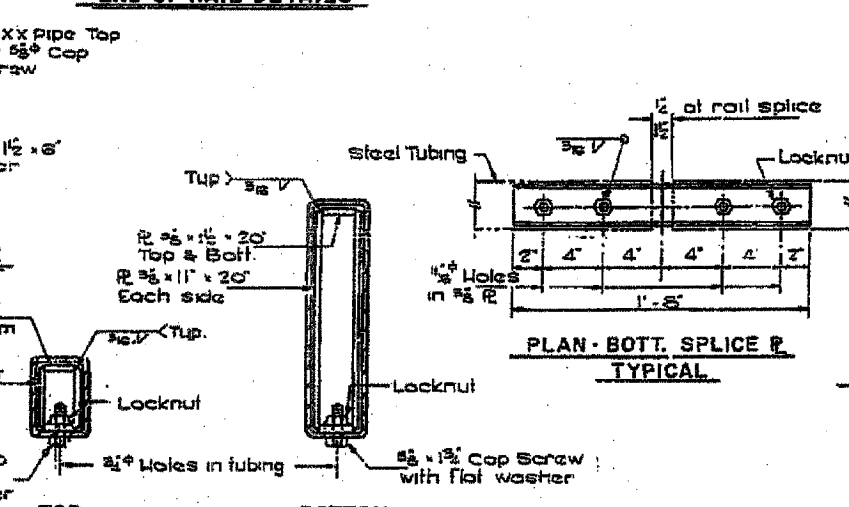
SECTION B-B



TOP ANCHOR PLATE

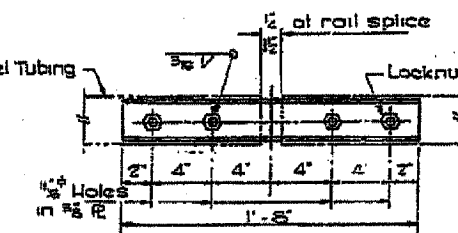


BOTTOM ANCHOR DEVICE



TOP SECTIONS AT RAIL SPLICE

BOTTOM SECTIONS AT RAIL SPLICE



PLAN - BOTT. SPLICE P. TYPICAL

BILL OF MATERIAL

ITEM	QUANT.
Steel Railing, Type T L.F.	234

STEEL RAILING, TYPE T  
SECTION 123 BR-1  
E.A. ROUTE 840  
IROQUOIS COUNTY