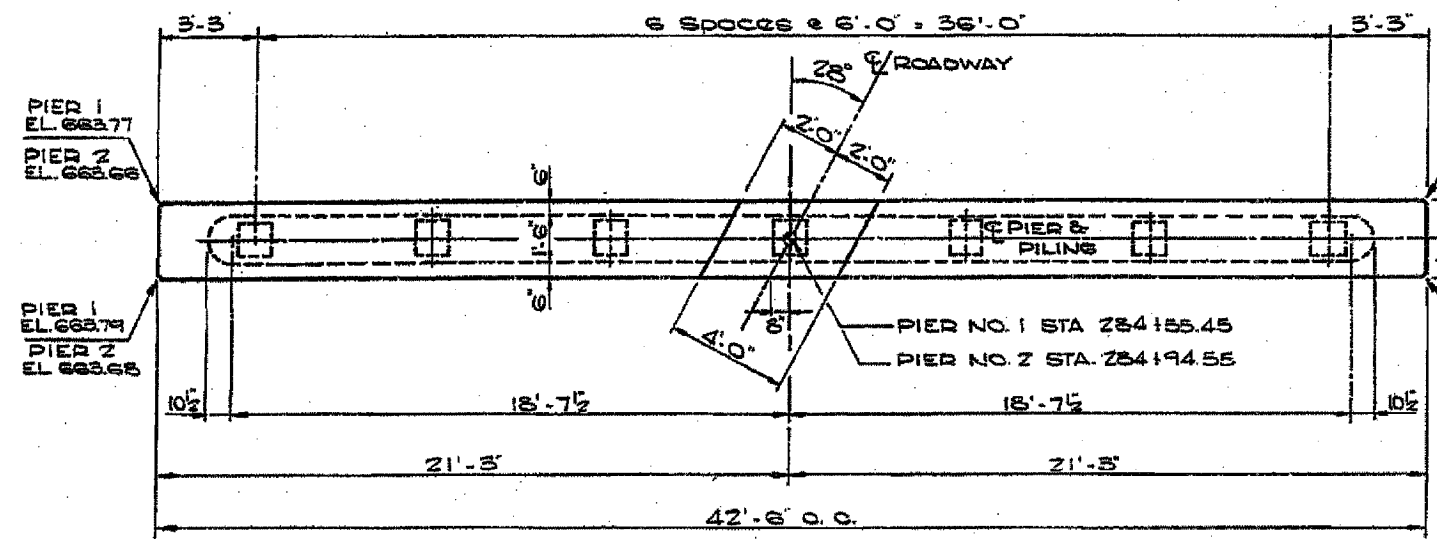
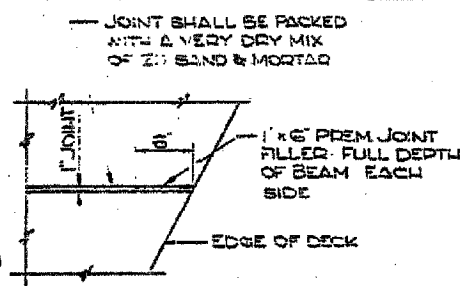


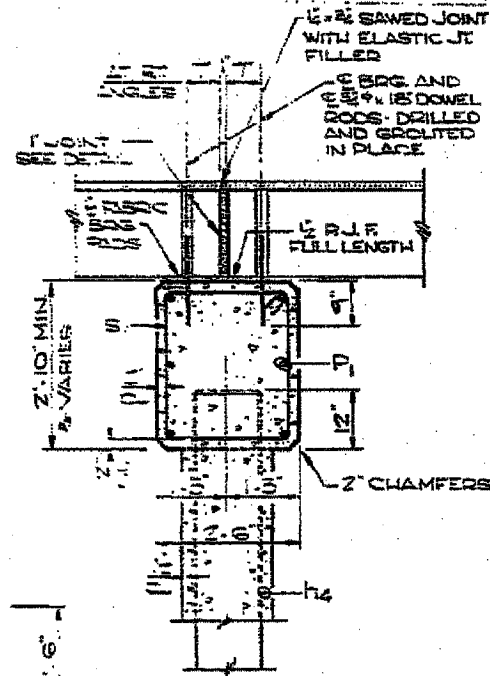
123 BR-1	2' 16"
2' 10" IROQUOIS	2' 16"



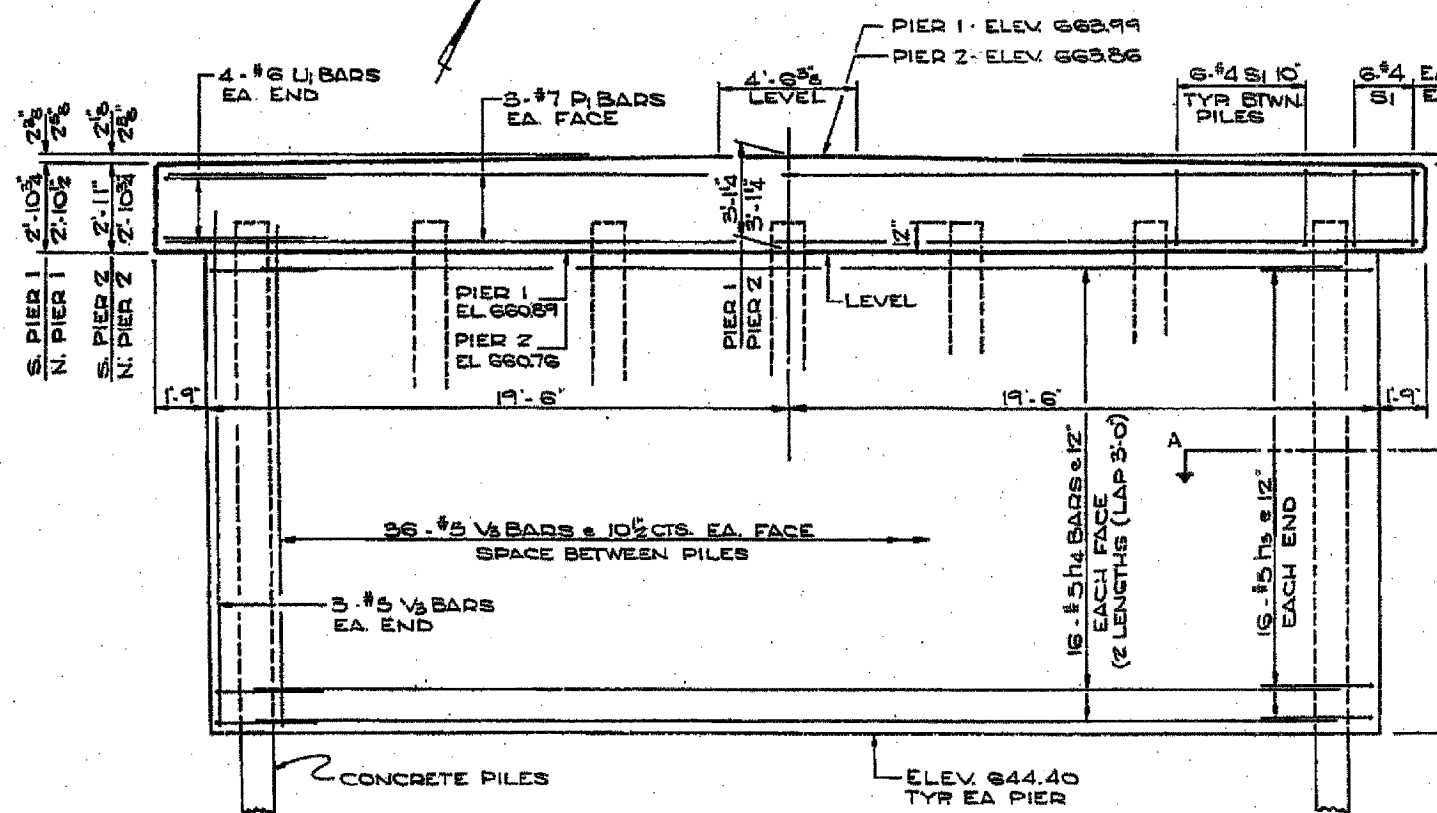
PLAN VIEW



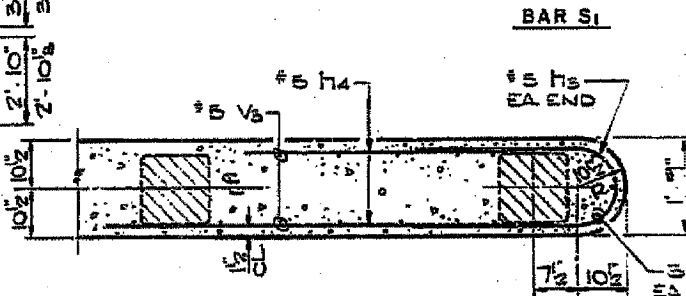
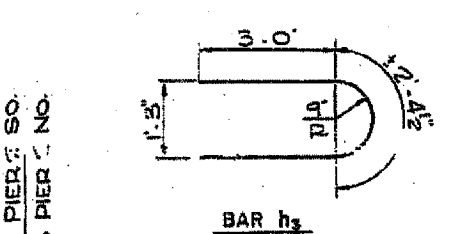
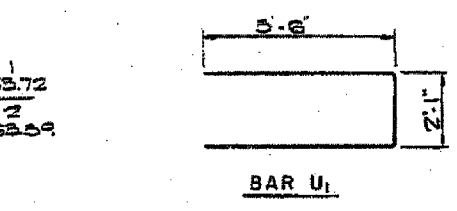
DECK JOINT DETAIL



SECTION THRU PIER



ELEVATION



SECTION A-A

PILE DATA

TYPE	CONCRETE
CAPACITY	42 TON
EST. LENGTH	44 FEET
NO. REQ'D. PIER 1	6+1 TEST PILE
PIER 2	7

SUM. OF MATERIAL - 2 PIERS

BAR NO.	SIZE	LENGTH	SHAPE
#4	#5	8'-5"	U
#4	#5	19'-6"	U
#2	#7	42'-0"	U
#1	#6	10'-2"	U
#1	#6	13'-1"	U
#5	#5	17'-8"	U
CLASS X CONCRETE CUYS			
92.2			
REINFORCEMENT BARS LBS 6670			
CONCRETE PILES LIN. FT. 572			
TEST PILES (CONCRETE) EA. 1			
STRUCTURE EXCAV. CUYS 50			

NOTE
FORMS FOR THE PIER STEM DO NOT HAVE TO BE DEWATERED IF CONSTRUCTED TIGHTLY AND IF CONCRETE PLACED IN ACCORDANCE WITH THE PROVISIONS OF ARTICLE 504.12 OF THE STANDARD SPECIFICATIONS.

PIER DETAILS
SECTION 123 BR-1
F.A. ROUTE 840
IROQUOIS COUNTY