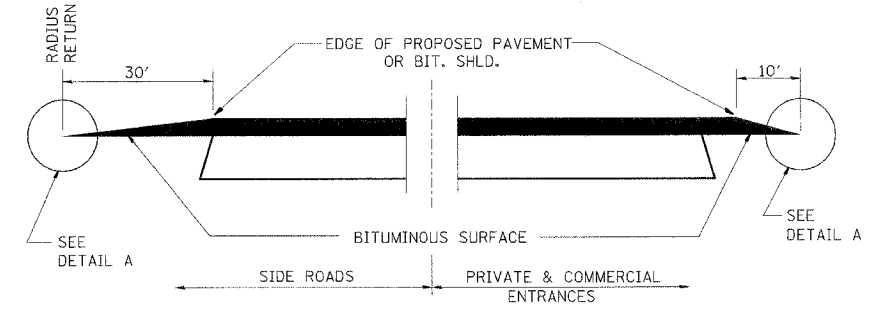
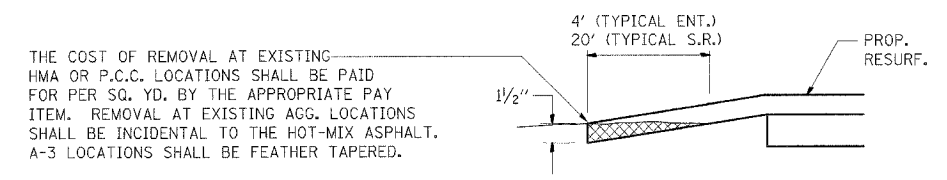


F.A.P. RTE.	SECTION	COUNTY	TOTAL SHEETS	SHEET NO.
840	123 BR-2	IROQUOIS	67	45
FED. ROAD DIST. NO. 7		ILLINOIS	FED. AID PROJECT	
CONTRACT NO. 66612				

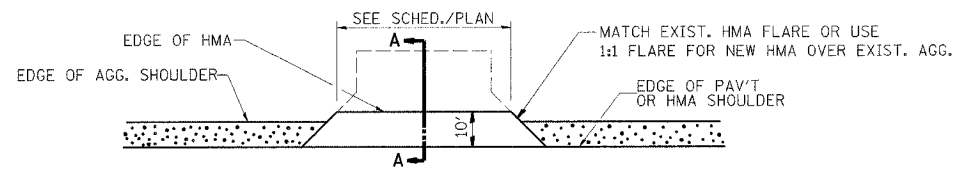


SECTION A-A
DETAILS AT ENTRANCES & SIDE ROADS

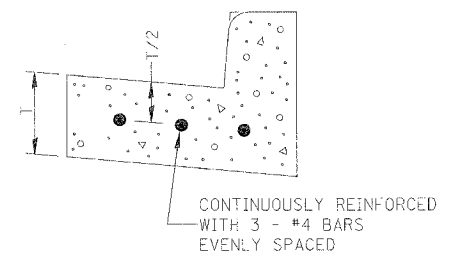


THE COST OF REMOVAL AT EXISTING HMA OR P.C.C. LOCATIONS SHALL BE PAID FOR PER SQ. YD. BY THE APPROPRIATE PAY ITEM. REMOVAL AT EXISTING AGG. LOCATIONS SHALL BE INCIDENTAL TO THE HOT-MIX ASPHALT. A-3 LOCATIONS SHALL BE FEATHER TAPERED.

DETAIL A

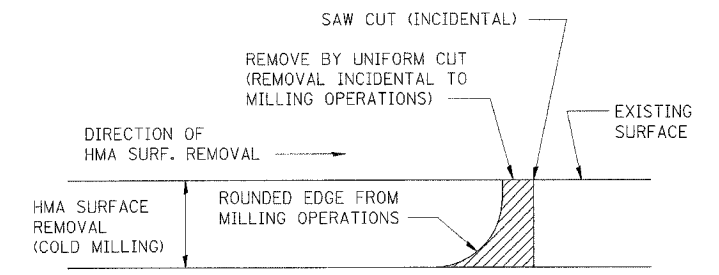


PLAN AT PRIVATE & COMMERCIAL ENTRANCES
(DO NOT RESURFACE FIELD ENTRANCES)



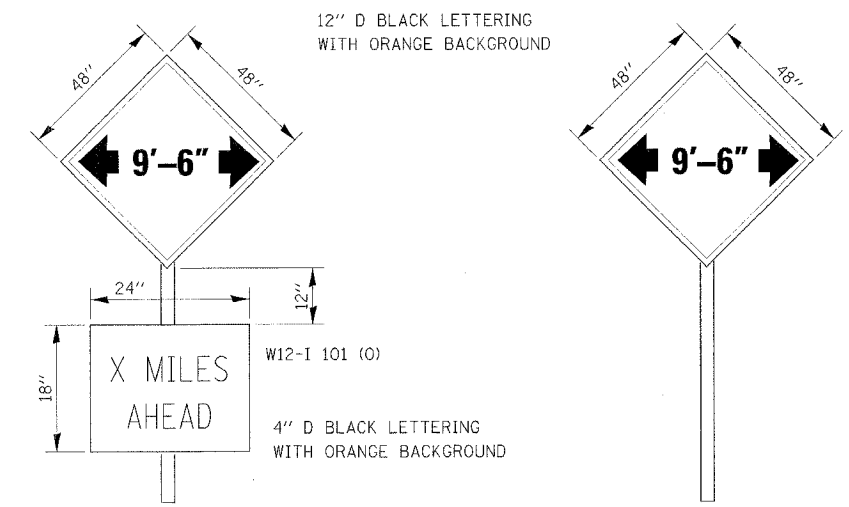
REINFORCEMENT SHALL NOT BE PAID FOR SEPARATELY BUT WILL BE INCLUDED IN THE CONTRACT UNIT PRICE FOR CC&G.

REINFORCEMENT DETAIL
FOR
COMBINATION CONCRETE
CURB AND GUTTER
TYPE B-6.24



NOTE: WHEN MILLING OPERATIONS PRODUCE A ROUNDED EDGE, THEN A SAW CUT SHALL BE USED TO MANUFACTURE A PERPENDICULAR EDGE AS SHOWN IN THE DETAIL. THE ENGINEER SHALL BE THE SOLE JUDGE CONCERNING THE USE OF THIS DETAIL.

HOT-MIX ASPHALT DETAIL AT BUTT JOINTS



- LOCATIONS:
- IL 49 NORTHBOUND AND SOUTHBOUND IN ADVANCE OF PROJECT
 - WEST HARRISON AVENUE EASTBOUND WITH DIRECTIONAL ARROWS
 - CLAYTONVILLE/GOODWINE ROAD WESTBOUND WITH DIRECTIONAL ARROWS

TO BE POST MOUNTED AS SHOWN ELSEWHERE IN THE PLANS.

THE ENGINEER WILL NOTIFY DISTRICT 3 BUREAU OF OPERATIONS 14 CALENDAR DAYS PRIOR TO INSTALLING ANY TRAFFIC CONTROL DEVICES THAT WILL RESTRICT THE PAVEMENT WIDTH.

THE CONTRACTOR SHALL BE RESPONSIBLE FOR COORDINATING WITH THE ENGINEER TO MEET THIS REQUIREMENT.

COST OF SUPPLYING, INSTALLING, MAINTAINING AND REMOVING WIDTH RESTRICTION SIGNS SHALL BE INCLUDED IN THE COST OF THE TRAFFIC CONTROL AND PROTECTION PAY ITEMS.

WIDTH RESTRICTION SIGNING DETAILS

 Excellence through Ownership 200 West Front Street Wheaton, IL 60187	REVISIONS NAME DATE	ILLINOIS DEPARTMENT OF TRANSPORTATION F.A.P. ROUTE 840 (IL-49)
	SCALE: NOT TO SCALE DATE: AUGUST 7, 2007	DETAILS

PLOT SCALE: 1/2"=1'-0"
 PLOT TIME: 3:43:51 PM
 PLOTTED BY: J. Tracey
 A:\2007\2007\road\Design\2007_DistDet_Dwg.dgn
 MODEL NAME: DETOUT