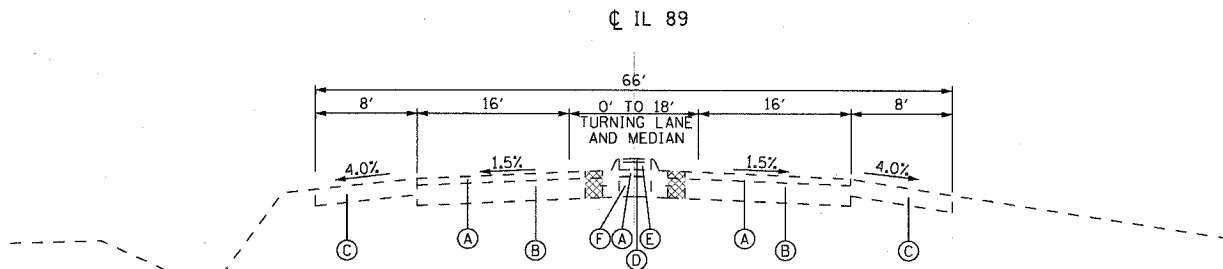
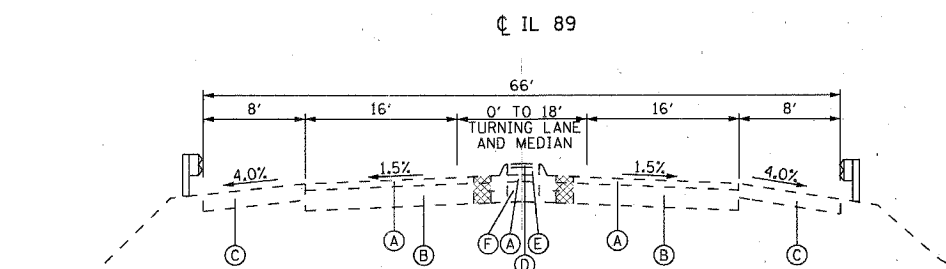


F.A.I. RTE.	SECTION	COUNTY	TOTAL SHEETS	SHEET NO.
80	06-BHBR	BUREAU	165	5
STA.		TO STA.		
FED. ROAD DIST. NO. 3 ILLINOIS FED. AID PROJECT				



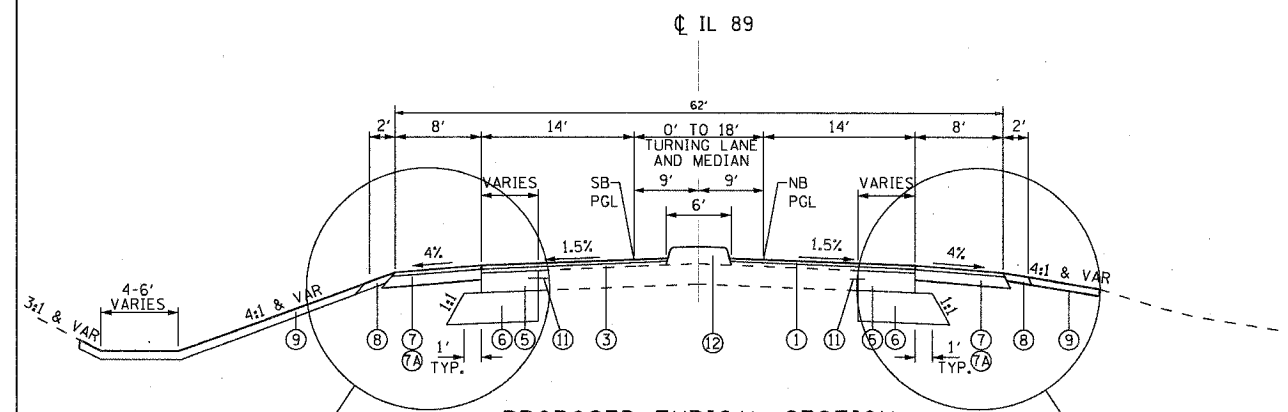
**EXISTING TYPICAL SECTION**  
 STA 228+59.0 TO STA 236+95.55  
 STA 245+25 TO STA 262+58



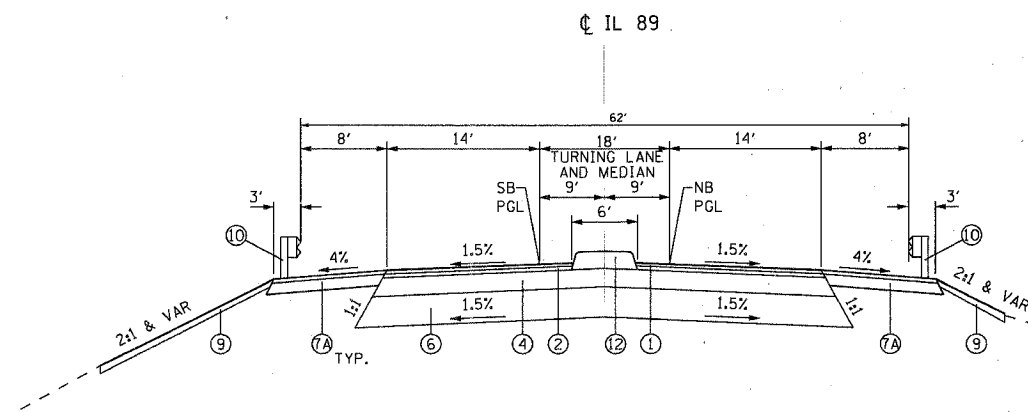
**EXISTING TYPICAL SECTION**  
 STA 236+95.5 TO STA 245+25  
 BRIDGE OMISSION STA 239+69.52 TO STA 241+84.09

**EXISTING LEGEND**

- (A) BITUMINOUS CONCRETE (+/- 3")
- (B) PCC PAVEMENT (+/- 10")
- (C) BITUMINOUS SHOULDERS (8")
- (D) BITUMINOUS SURFACE (2")
- (E) AGGREGATE BASE COURSE (4")
- (F) BITUMINOUS BASE COURSE (5")



**PROPOSED TYPICAL SECTION**  
 STA 228+59.0 TO STA 238+39.5  
 STA 243+14.1 TO STA 262+58



**PROPOSED TYPICAL SECTION**  
 STA 238+39.5 TO STA 243+14.1  
 BRIDGE OMISSION STA 239+69.52 TO STA 241+84.09

**PROPOSED LEGEND**

- (1) HOT-MIX ASPHALT SURFACE COURSE, MIX "D", N70 1 1/2"
- (2) LEVELING BINDER (MACHINE METHOD), N70, 1 1/2"
- (3) LEVELING BINDER (MACHINE METHOD), N70, VARIES 0-11"
- (4) HOT-MIX ASPHALT BASE COURSE, 9 3/4"
- (5) PCC BASE COURSE WIDENING, 10"
- (6) AGGREGATE SUBGRADE 12"
- (7) HOT-MIX ASPHALT SHOULDERS, 6 1/2"
- (7A) HOT-MIX ASPHALT SHOULDERS, 9"
- (8) AGGREGATE SHOULDERS, TYPE B, (4")
- (9) TOPSOIL FURNISH & PLACE, 4"
- (10) STEEL PLATE BEAM GUARDRAIL, TYPE A
- (11) TIE-BARS (SEE NOTE)
- (12) ISLAND PAVEMENT, SPECIAL (SEE ROADWAY DETAIL SHEET 113)

**DITCH SECTIONS:**  
 STA 229+42.8 TO STA 233+57.5 LEFT  
 STA 253+20.7 TO STA 257+91.5 LEFT  
 STA 255+21.0 TO STA 262+84.0 RIGHT

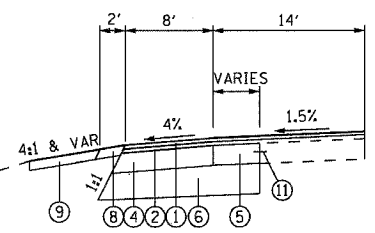
**HMA SHOULDERS, 9":**  
 STA 234+55.2 TO STA 239+47.1 LEFT  
 STA 242+21.6 TO STA 246+77.8 LEFT  
 STA 234+72.1 TO STA 239+32.0 RIGHT  
 STA 242+06.5 TO STA 246+96.9 RIGHT

**NOTE:**

TIE BARS IN PAVEMENT OR BETWEEN PAVEMENT AND OTHER NEW/OR EXISTING PCC APPURTENANCES WILL BE MEASURED IN ACCORDANCE WITH ARTICLE 508.07 OF THE STANDARD SPECIFICATIONS. TIE BARS SHALL BE TYPE NO. 8, 30 IN. IN LENGTH AT 30 IN. CENTERS, EPOXY COATED.

	SUPERPAVE SHOULDER TOP LIFT	SUPERPAVE LEVEL BINDER	SUPERPAVE SURFACE	SUPERPAVE SURFACE INCIDENTAL	SUPERPAVE BASE COURSE	SUPERPAVE SHOULDERS
PG GRADE	PG64-22	PG64-22	PG64-22	PG64-22	PG58-22	PG64-22
MAX % RAP ALLOWABLE**	10%***	15%***	10%***	15%	25%	25%
DESIGN AIR VOIDS	4.0% @ N70	4.0% @ N70	4.0% @ N70	4.0% @ N50	3.0% @ N50	4.0% @ N50
MIXTURE COMPOSITION	IL 12.5 OR IL 9.5	IL 9.5	IL 12.5 OR IL 9.5	IL 12.5 OR IL 9.5	IL 19.0	IL 19.0
FRICTION AGGREGATE	MIXTURE D		MIXTURE D	MIXTURE C		
DENSITY CONTROL METHOD	*	SATISFACTION OF THE ENGINEER	CORRELATION		CORES/NUCLEAR	*

\* MATERIAL SHALL BE COMPACTED TO 93-97 PERCENT OF THE MAXIMUM THEORETICAL DENSITY, EXCEPT THAT THE BOTTOM LIFT SHALL BE COMPACTED TO A MINIMUM OF 92.0 PERCENT. THE MAXIMUM THEORETICAL DENSITY SHALL BE DETERMINED FROM THE MOVING AVERAGE AS SPECIFIED IN THE OC/QA SPECIFICATION.  
 \*\* IF RAP OPTION IS SELECTED, THE ASPHALT CEMENT GRADE MAY NEED TO BE ADJUSTED. THIS WILL BE DETERMINED BY THE ENGINEER.  
 \*\*\* SEE RAP SPECIAL PROVISION



**DETAIL A**  
 FULL DEPTH SHOULDERS  
 STA 232+70 TO STA 234+62  
 STA 246+88 TO STA 251+00

REVISIONS	
NAME	DATE

ILLINOIS DEPARTMENT OF TRANSPORTATION  
 IL ROUTE 89 OVER I-80

**TYPICAL SECTIONS**

SCALE: VERT. NONE  
 HORIZ. NONE  
 DATE: 08/10/07

DRAWN BY ACE/CAD  
 CHECKED BY TMH

PLOT DATE = 8/10/2007  
 FILE NAME = c:\p\proj\1\206-4803-002\road\89TYPICAL.dwg  
 PLOT SCALE = 1/8" = 1'-0"  
 PLOT TIME = 10:23:53 AM

