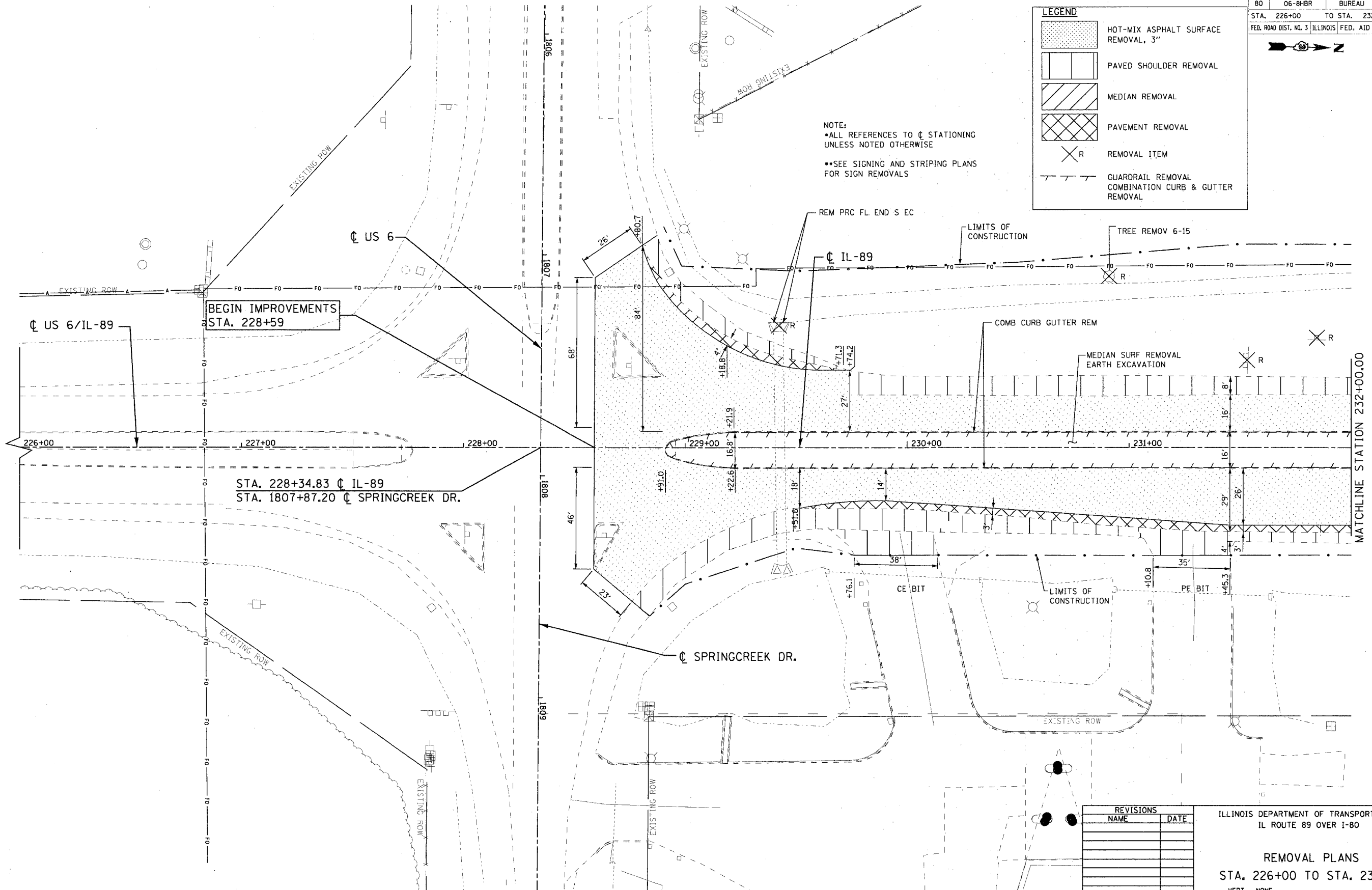


F.A.I. RTE.	SECTION	COUNTY	TOTAL SHEETS	SHEET NO.
80	06-BHBR	BUREAU	165	17
STA. 226+00		TO STA. 232+00		
FED. ROAD DIST. NO. 3 ILLINOIS FED. AID PROJECT				

LEGEND

[Pattern: Stippled]	HOT-MIX ASPHALT SURFACE REMOVAL, 3"
[Pattern: Horizontal lines]	PAVED SHOULDER REMOVAL
[Pattern: Diagonal lines /]	MEDIAN REMOVAL
[Pattern: Diagonal lines \]	PAVEMENT REMOVAL
[Symbol: X with R]	REMOVAL ITEM
[Symbol: Dashed line]	GUARDRAIL REMOVAL COMBINATION CURB & GUTTER REMOVAL

NOTE:
 • ALL REFERENCES TO C STATIONING UNLESS NOTED OTHERWISE
 • SEE SIGNING AND STRIPING PLANS FOR SIGN REMOVALS



REVISIONS	
NAME	DATE

ILLINOIS DEPARTMENT OF TRANSPORTATION
 IL ROUTE 89 OVER I-80

REMOVAL PLANS
 STA. 226+00 TO STA. 232+00

SCALE: VERT. NONE
 HORIZ. 1" = 20'
 DATE: 08/10/07

DRAWN BY ACE/CAD
 CHECKED BY TMH

PLOT DATE : 8/9/2007
 FILE NAME : g:\projects\2054889_802\usda\SPRNG17.dwg
 PLOT SCALE : 20.000 / IN.
 USER NAME : zbranid

