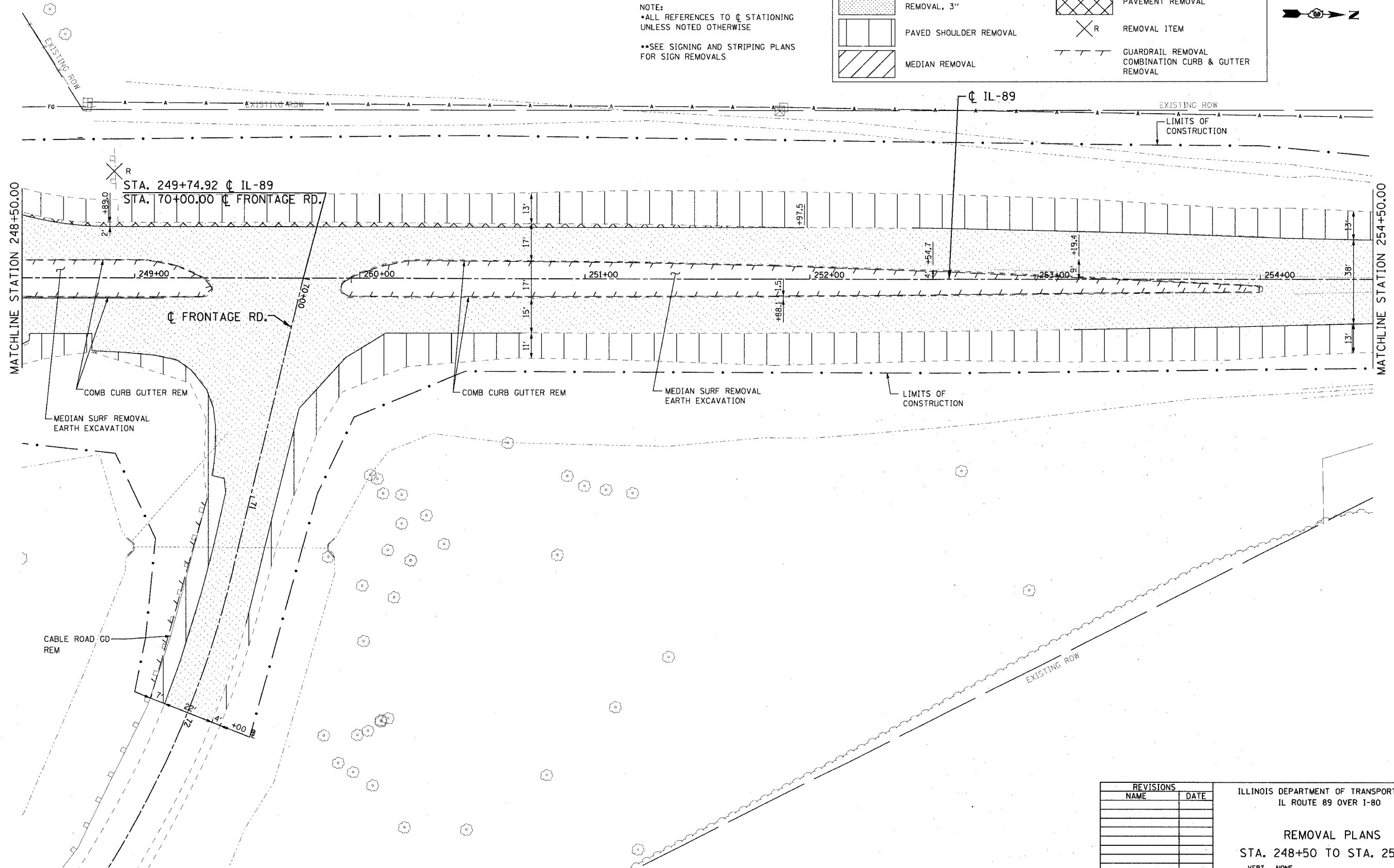


F.A.I. RTE.	SECTION	COUNTY	TOTAL SHEETS	SHEET NO.
80	06-BHBR	BUREAU	165	21
STA. 248+50		TO STA. 254+50		
FED. ROAD DIST. NO. 3 ILLINOIS FED. AID PROJECT				



LEGEND	
	HOT-MIX ASPHALT SURFACE REMOVAL, 3"
	PAVEMENT REMOVAL
	PAVED SHOULDER REMOVAL
	MEDIAN REMOVAL
	REMOVAL ITEM
	GUARDRAIL REMOVAL COMBINATION CURB & GUTTER REMOVAL

NOTE:
 •ALL REFERENCES TO \dot{C} STATIONING UNLESS NOTED OTHERWISE
 ••SEE SIGNING AND STRIPING PLANS FOR SIGN REMOVALS



PLOT DATE: 8/9/2007
 FILE NAME: g:\projects\2005\489_882\cadd\BRRM61r.dwg
 PLOT SCALE: 20.0000 1" = 20'
 USER NAME: zprandi

REVISIONS	
NAME	DATE

ILLINOIS DEPARTMENT OF TRANSPORTATION
 IL ROUTE 89 OVER I-80

REMOVAL PLANS
 STA. 248+50 TO STA. 254+50

SCALE: VERT. NONE
 HORIZ. 1" = 20'
 DATE: 08/10/07

DRAWN BY: ACE/CAD
 CHECKED BY: TMH

