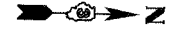
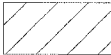


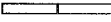



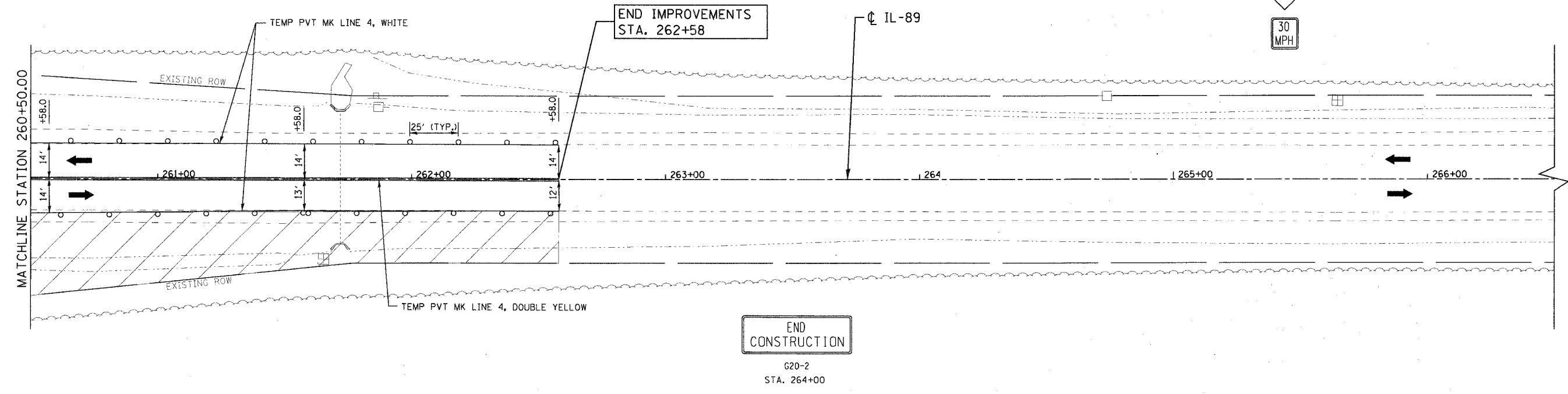
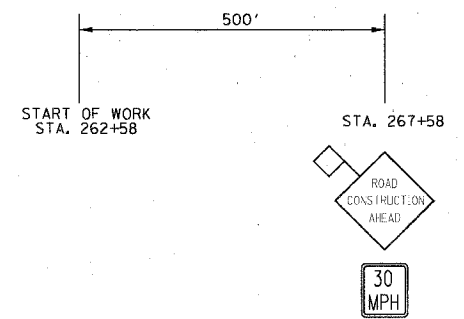


F.A.I. RTE.	SECTION	COUNTY	TOTAL SHEETS	SHEET NO.
80	06-8HBR	BUREAU	165	45
STA. 260+50		TO STA. 266+50		
FED. ROAD DIST. NO. 3 ILLINOIS FED. AID PROJECT				



LEGEND

-  CONSTRUCTION ZONE
-  DRUM WITH STEADY BURN MONO-DIRECTIONAL LIGHTS
-  TRAFFIC DIRECTION
-  TEMPORARY CONCRETE BARRIER WALL
-  STEEL PLATE BEAM GUARDRAIL, TYPE A
-  TYPE III BARRICADE
-  PAVEMENT PLACED IN PRE-STAGES



PLOT DATE = 8/9/2007
 FILE NAME = g:\projects\2005-08-09_082\acad\BPM1107.rds
 PLOT SCALE = 20/00 / IN.
 USER NAME = zbrand

REVISIONS	
NAME	DATE

ILLINOIS DEPARTMENT OF TRANSPORTATION
 IL ROUTE 89 OVER I-80
MAINTENANCE OF TRAFFIC
STAGE 1
 STA. 260+50 TO STA. 266+50
 SCALE: VERT. NONE
 HORIZ. 1" = 20'
 DATE: 08/10/07
 DRAWN BY ACE/CAD
 CHECKED BY TMH

