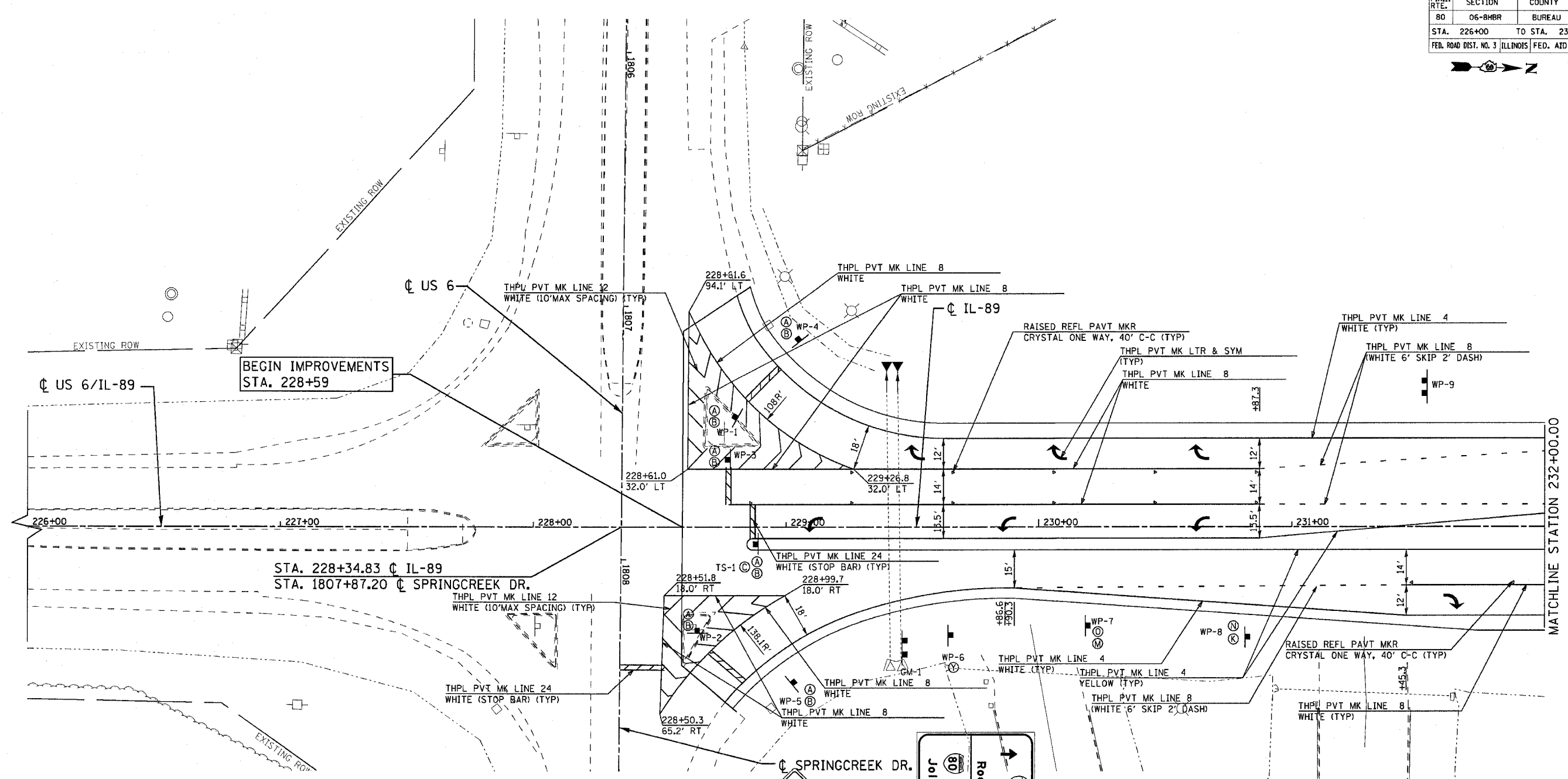


F.A.I. RTE.	SECTION	COUNTY	TOTAL SHEETS	SHEET NO.
80	06-8HBR	BUREAU	165	63
STA. 226+00		TO STA. 232+00		
FED. ROAD DIST. NO. 3		ILLINOIS	FED. AID PROJECT	



(A) RI-1 30" x 30"	(B) RI-4 18" x 6"	(C) R4-7 24" x 30"	(D) R5-1 30" x 30"	(E) R6-1 36" x 12"	(F) R6-1 36" x 12"	(G) R6-3 30" x 24"	(H) R8-3a 24" x 24"	(I) W6-1 36" x 36"	(J) W14-1 30" x 30"	(K) GM-1 24" x 24"	(L) M1-1 24" x 24"	(M) M1-4 24" x 24"	(N) M1-5 24" x 24"
(O) M2-1 21" x 15"	(P) M3-1 24" x 10"	(Q) M3-2 24" x 10"	(R) M3-3 24" x 10"	(S) M3-4 24" x 10"	(T) M5-1 24" x 18"	(U) M6-1 18" x 10"	(V) M6-1 18" x 10"	(W) M6-3 24" x 18"	(X) W 24" x 18"	(Y) X 24" x 18"	(Z) Y 24" x 18"	(AA) Y 24" x 18"	

NOTE: SEE SIGNING SCHEDULE FOR PAY ITEMS AND LOCATIONS.

REVISIONS	
NAME	DATE

ILLINOIS DEPARTMENT OF TRANSPORTATION  
IL ROUTE 89 OVER I-80

**PAVEMENT MARKING AND SIGNING**  
STA. 226+00 TO STA. 232+00

VERT. NONE  
SCALE: HORIZ. 1" = 20'  
DATE: 08/10/07

DRAWN BY ACE/CAD  
CHECKED BY TMH

PLOT DATE: 8/28/2007  
 PLOT SCALE: 1/8" = 1'-0"  
 USER NAME: zbrand

