

STATE OF ILLINOIS
DEPARTMENT OF TRANSPORTATION

| | | | | | |
|-----------------------|----------|------------------|-------|--------------|-----------|
| ROUTE NO. | SECTION | COUNTY | SHEET | TOTAL SHEETS | SHEET NO. |
| FAI 80 | 06-8HBR | BUREAU | 165 | 73 | 22 SHEETS |
| FED. ROAD DIST. NO. 7 | ILLINOIS | FED. AID PROJECT | | | |

Contract # 66641

GENERAL NOTES

- Fasteners shall be AASHTO M164 Type 1, mechanically galvanized bolts. Bolts $\frac{7}{8}$ in. ϕ , holes $\frac{15}{16}$ in. ϕ , unless otherwise noted.
- Calculated weight of Structural Steel (M270, Grade 50) = 339,190 lbs. Calculated weight of Structural Steel (M270, Grade 36) = 41,930 lbs.
- No field welding is permitted except as specified in the contract documents.
- Reinforcement bars shall conform to the requirements of ASTM A 706 Gr 60 (1L Modified). See Special Provisions.
- Reinforcement bars designated (E) shall be epoxy coated.
- If the Contractor elects to use cantilever forming brackets on the exterior girders, the brackets shall be placed at the same locations as required for the hardwood blocks in Article 503.06(b) of the Standard Specifications. If additional cantilever forming brackets are required, hardwood blocking shall be wedged between the exterior and the first interior girder at each of these additional bracket locations.
- Bearing seat surfaces shall be constructed or adjusted to the designated elevations within a tolerance of $\frac{1}{8}$ in. (0.01 ft.). Adjustment shall be made either by grinding the surface or by shimming the bearings.
- Concrete Sealer shall be applied to the exposed surface areas of the Pier.
- The existing structural steel coating contains lead. The Contractor shall take appropriate precautions to deal with the presence of lead on this project.
- The Inorganic Zinc Rich Primer / Acrylic / Acrylic Paint System shall be used for shop and field painting of new structural steel except where otherwise noted. The color of the final finish coat for all interior steel surfaces shall be gray, Munsell No 5B 7/1. The color of the final coat for the exterior and the bottom flange of the fascia girders shall be Interstate Green, Munsell No 7.5G 4/B. See Special Provisions for "Cleaning and Painting New Metal Structures".
- The embankment configuration shown shall be the minimum that must be placed and compacted prior to construction of the abutments.
- The Contractor shall drive test piles to 110% of the nominal required bearing specified in production locations at substructures specified or approved by the Engineer before ordering the remainder of piles.
- The Steel H-piles shall be according to AASHTO M270 Grade 50.

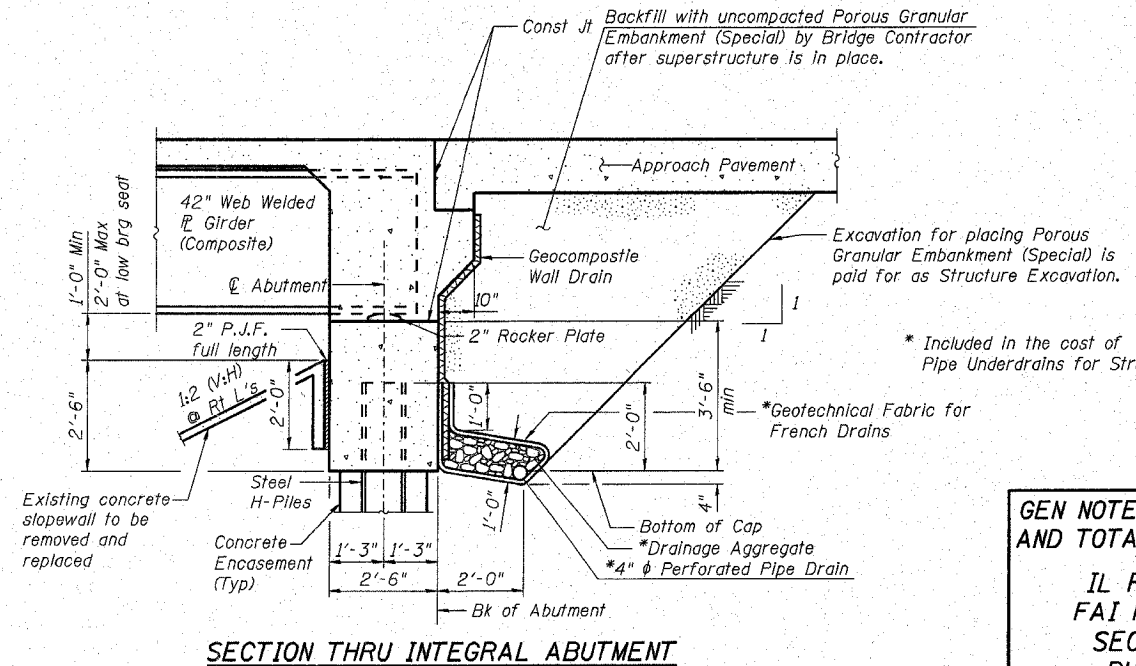
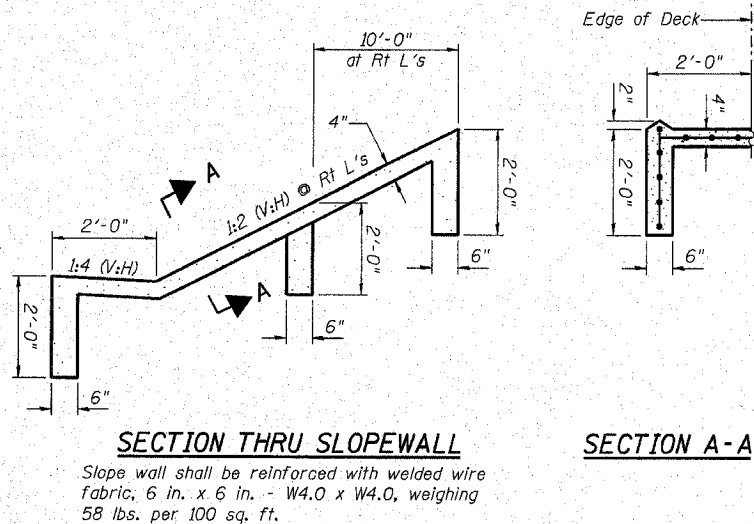
INDEX OF SHEETS

- S-1 General Plan
- S-2 General Notes, Index of Sheets and Total Bill of Material
- S-3 Stage Construction Details
- S-4 Temporary Concrete Barrier for Stage Construction
- S-5 Top of Deck Elevations (1 of 3)
- S-6 Top of Deck Elevations (2 of 3)
- S-7 Top of Deck Elevations (3 of 3)
- S-8 Top of South Approach Slab Elevations
- S-9 Top of North Approach Slab Elevations
- S-10 Deck Plan
- S-11 Superstructure Details (1 of 2)
- S-12 Superstructure Details (2 of 2)
- S-13 Framing Plan
- S-14 Framing Details
- S-15 Bearing Details
- S-16 South Abutment
- S-17 North Abutment
- S-18 Pier
- S-19 Bar Splicer Assembly Details
- S-20 Steel H-Pile Details
- S-21 Boring Logs (1 of 2)
- S-22 Boring Logs (2 of 2)

TOTAL BILL OF MATERIAL

| ITEM | UNIT | SUPER | SUB | TOTAL |
|--|-------|--------|-------|--------|
| Porous Granular Embankment | Cu yd | | 39 | 39 |
| Porous Granular Embankment (Special) | Cu yd | | 168 | 168 |
| Removal of Existing Structures | Each | | | 2 |
| Protective Shield | Sq yd | 754 | | 754 |
| Structure Excavation | Cu yd | | 933 | 933 |
| Concrete Structures | Cu yd | | 236.3 | 236.3 |
| Concrete Superstructure | Cu yd | 480.4 | | 480.4 |
| Bridge Deck Grooving | Sq yd | 1431 | | 1431 |
| Concrete Encasement | Cu yd | | 12.9 | 12.9 |
| Protective Coat | Sq yd | 1658 | | 1658 |
| Furnishing and Erecting Structural Steel | L Sum | 1 | | 1 |
| Stud Shear Connectors | Each | 3840 | | 3840 |
| Reinforcement Bars, Epoxy Coated | Pound | 115460 | 29270 | 144730 |
| Bar Splicers | Each | 937 | 91 | 1028 |
| Slope Wall 4 Inch | Sq yd | | 708 | 708 |
| Furnishing Steel Piles HPI2x53 | Foot | | 1524 | 1524 |
| Driving Piles | Foot | | 1524 | 1524 |
| Test Pile Steel HPI2x53 | Each | | 2 | 2 |
| Temporary Sheet Piling | Sq ft | | 328 | 328 |
| Name Plates | Each | | 1 | 1 |
| Anchor Bolts, 1" | Each | | 32 | 32 |
| Anchor Bolts, $\frac{1}{4}$ " | Each | | 32 | 32 |
| Concrete Sealer | Sq ft | | 192.3 | 192.3 |
| Geocomposite Wall Drain | Sq yd | | 176 | 176 |
| Pipe Underdrains for Structures 4" | Foot | | 126 | 126 |

All drainage system components shall extend to 2'-0" from the end of each wingwall except an outlet pipe shall extend until intersecting with the side slopes. The pipes shall drain into concrete headwalls. (See Article 601.05 of the Standard Specifications and Highway Standard 601101)



GEN NOTES, INDEX OF SHEETS AND TOTAL BILL OF MATERIAL

IL ROUTE 89 OVER
FAI ROUTE 80 (I-80)
SECTION 06-8HBR
BUREAU COUNTY
STATION 3702+69.82
STRUCTURE NO. 006-0178

| | |
|----------|-----|
| DESIGNED | BPS |
| CHECKED | BHS |
| DRAWN | RRG |
| CHECKED | GSP |



PLOT DATE = 8/15/2007
 FILE NAME = G:\PROJECT\2064891_002\1000\1189R_LPEZ.stb
 USER NAME = zhangb