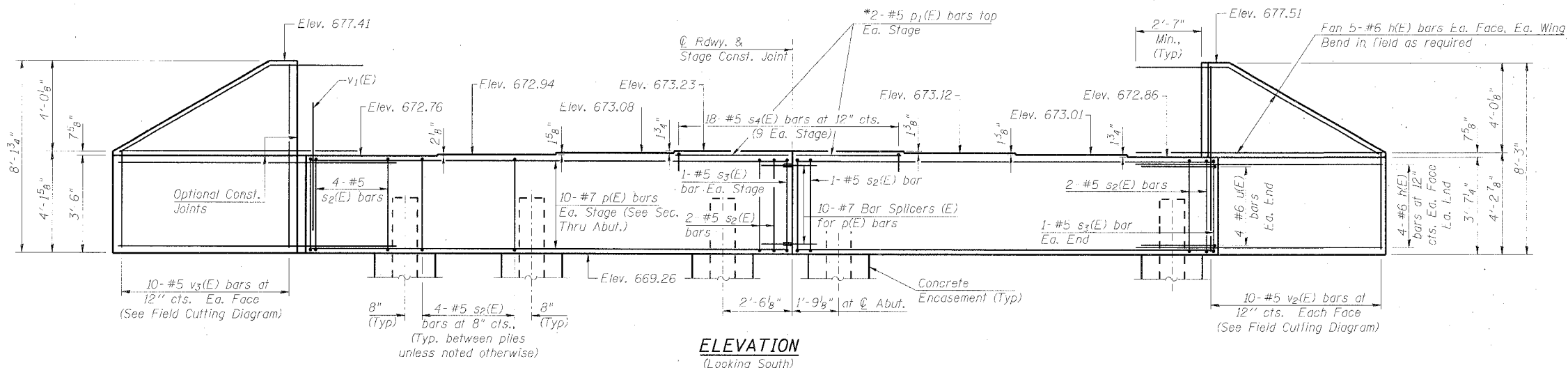


STATE OF ILLINOIS
DEPARTMENT OF TRANSPORTATION

ROUTE NO.	SECTION	COUNTY	SHEET	SHEET	SHEET NO. 16 22 SHEETS
FAI 80	06 8HBR	BUREAU	165	81	
FED. ROAD DIST. NO. 7		ILLINOIS		FED. AID PROJECT	

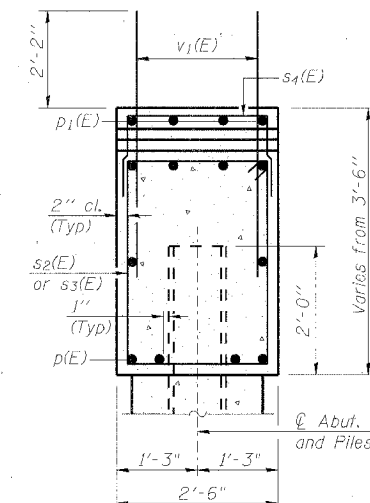
Contract # 66641

Notes: Pour steps monolithically with cap.
Space reinforcement in cap to miss anchor bolts.



ELEVATION
(Looking South)

*Order p₁(E) bars full length.
Cut to fit skew and use
remainder in opposite face.



SEC. THRU ABUT.
(Dimensions at Rt. L's)

BILL OF MATERIAL
(South Abutment)

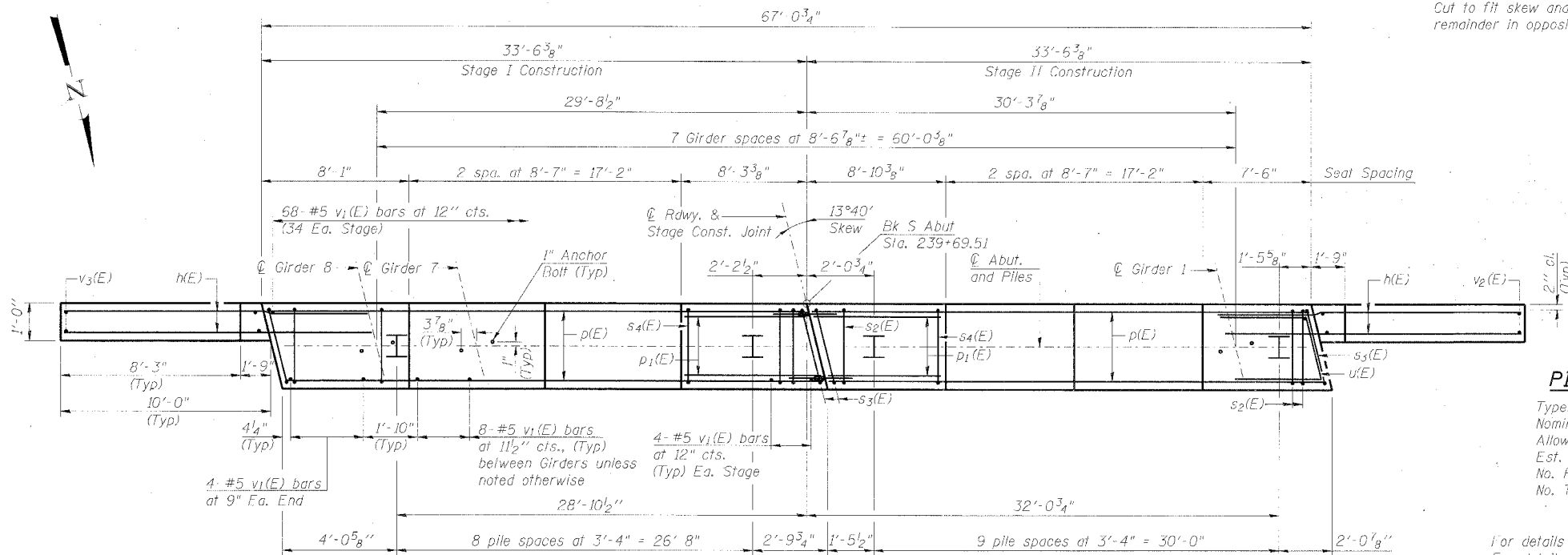
Bar	No.	Size	Length	Shape
h(E)	36	#6	12'-6"	—
p(E)	20	#7	33'-2"	—
p ₁ (E)	4	#5	16'-6"	—
s ₂ (E)	77	#5	11'-7"	□
s ₃ (E)	4	#5	11'-9"	□
s ₄ (E)	18	#5	6'-6"	□
u(E)	8	#6	7'-3"	┘
v ₁ (E)	132	#5	4'-4"	—
v ₂ (E)	10	#5	11'-10"	—
v ₃ (E)	10	#5	11'-8"	—
Structure Excavation			Cu. Yd.	213
Concrete Structures			Cu. Yd.	28.3
Porous Granular Embankment (Special)			Cu. Yd.	84
Geocomposite Wall Drain			Sq. Yd.	88
Pipe Underdrain for Structures 4"			Foot	63
Reinforcement Bars, Epoxy Coated			Pound	4,140
Furnishing Steel Piles HP 12x53			Foot	810
Driving Piles			Foot	810
Test Pile Steel HP 12x53			Each	1
Concrete Encasement			Cu. Yd.	6.6

MINIMUM BAR LAP

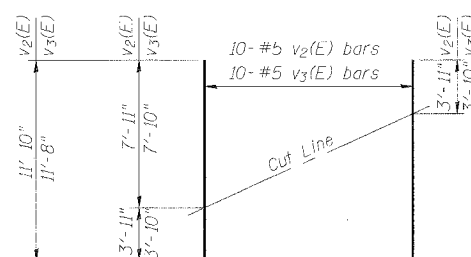
#5 bar = 2'-2"
#6 bar = 2'-7"

PILE DATA

Type: Steel HP12x53
Nominal Required Bearing: 270 kips
Allowable Resistance Available: 90 kips
Est. Length: 45 Ft.
No. Production Piles: 18
No. Test Piles: 1
For details of Bar Splicers, see Sheet No. 19.
For details of Piles and Concrete Encasement, see Sheet No. 20.
For details of Integral Abutment Bearing, see Sheet No. 15.
For drainage details, see Section Thru Integral Abutment on Sheet No. 2.

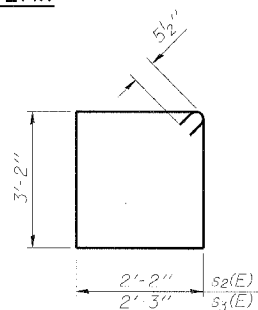


PLAN

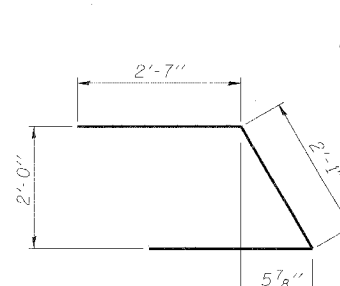


FIELD CUTTING DIAGRAM

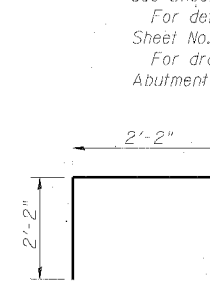
Order v₂(E) and v₃(E) full length. Cut as shown and use remainder of bars in opposite face.



BARS s₂(E) & s₃(E)



BAR u(E)



BAR s₄(E)

DESIGNED	ADB
CHECKED	DLB
DRAWN	ADB
CHECKED	MTH

PLOT DATE = 7/30/2007
FILE NAME = p:\projects\2004\6691_8822\cadd\IL8HBR-AB5.rvt
PLOT SCALE = N/A
USER NAME = zhangb

SOUTH ABUTMENT
IL ROUTE 89 OVER
FAI ROUTE 80 (I-80)
SECTION 06-8HBR
BUREAU COUNTY
STATION 3702+69.82
STRUCTURE NO. 006-0178