

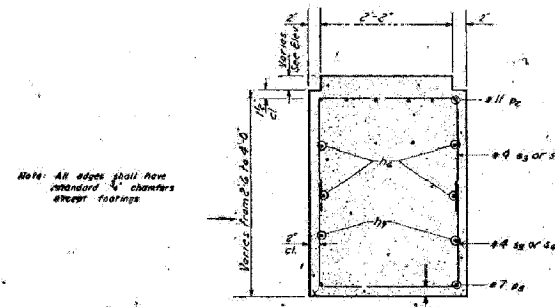
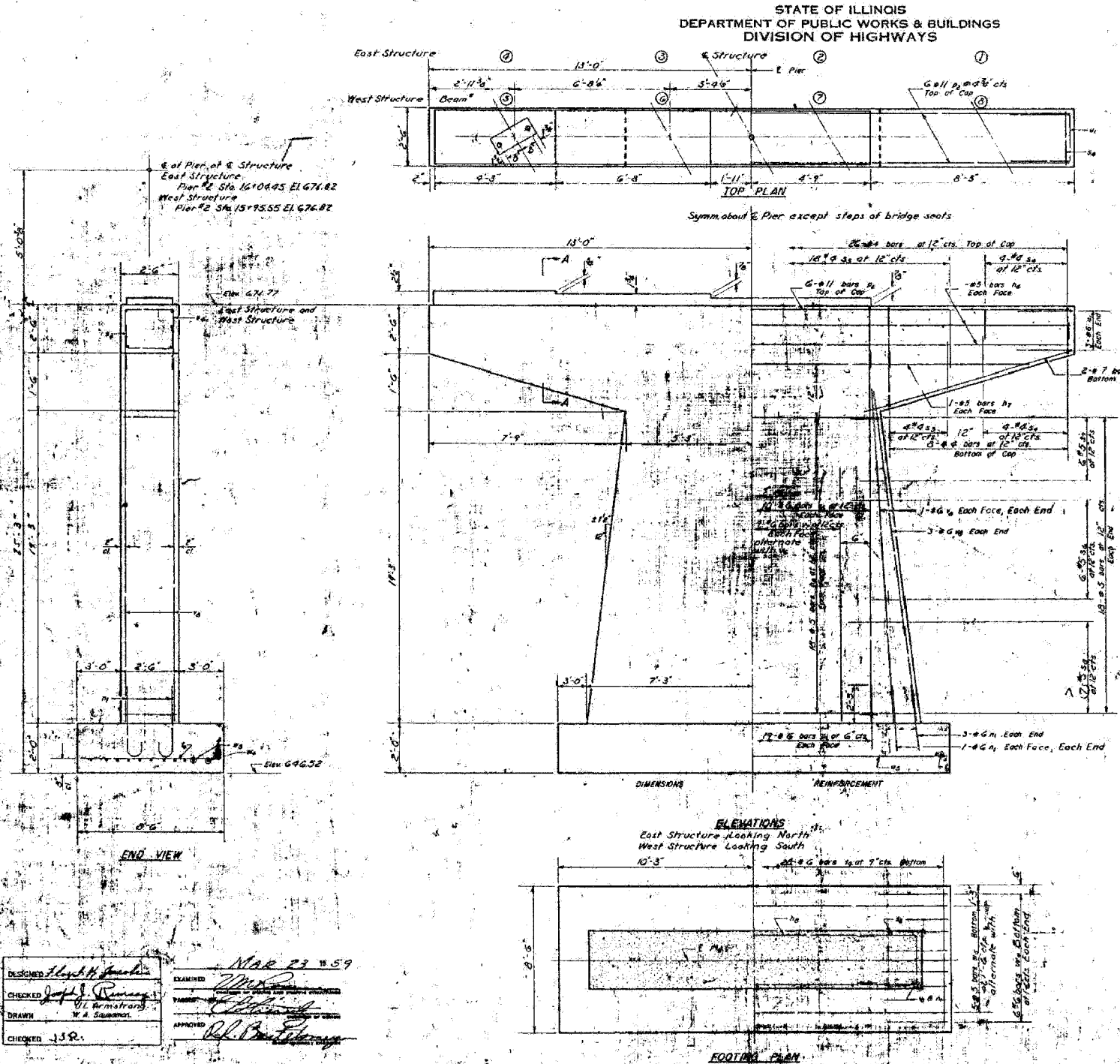
STATE OF ILLINOIS
DEPARTMENT OF TRANSPORTATION

ROUTE NO.	SECTION	COUNTY	TOTAL SHEETS	SHEET NO.
FAI 80	06-8HBR	BUREAU	165	101
FED. ROAD DIST. NO. 7		STATE	FED. ROAD PROJECT	

Contract # 66641

ROUTE NO.	SECTION	COUNTY	TOTAL SHEETS	SHEET NO.
FAI 80	6-8HBR	BUREAU	21	12
FED. ROAD DIST. NO. 7		STATE	FED. ROAD PROJECT	

SHEET NO. 12
9 SHEETS

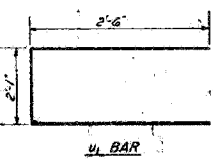


SECTION A-A

A B D DIMENSIONS

Bar	A	B
#3	2'-2"	2'-3"
#4	2'-2"	1'-10"
#6	2'-2"	2'-3"
#7	2'-2"	1'-9"
#8	2'-2"	3'-0"

5" BARS



U BAR



D BAR

**2 PIERS
BILL OF MATERIAL**

Bar No.	Size	Length	Shape
#3	#5	25'-0"	U
#4	#5	17'-2"	U
#6	#5	10'-2"	U
#7	#6	4'-0"	U
#8	#7	25'-0"	U
#9	#7	9'-0"	U
#10	#8	6'-0"	U
#11	#8	5'-10"	U
#12	#5	6'-0"	U
#13	#5	5'-6"	U
#14	#5	8'-2"	U
#15	#6	8'-3"	U
#16	#6	7'-1"	U
#17	#6	11'-8"	U
#18	#6	15'-0"	U
#19	#6	16'-3"	U
#20	#5	20'-3"	U
#21	#6	4'-8"	U

Class I Concrete: C-150
Reinforcement Bars: A-36

**FIXED PIER 2
EAST & WEST STRUCTURES
FAI R180 SEC. 6-8HBR
BUREAU COUNTY
STA. 312+11.90**

EXISTING PLANS - 1959
IL ROUTE 89 OVER
FAI ROUTE 80 (I-80)
SECTION 06-8HBR
BUREAU COUNTY
STATION 3702+69.82
STRUCTURE NO. 006-0178

FOR INFORMATION ONLY



PLOT DATE = 6/18/2007
FILE NAME = G:\PROJECT\2004\8891_002\CADD\IL89.dwg
PLOT SCALE = N/A
USER NAME = zsigler

DESIGNED: *Henry H. Jankin*
CHECKED: *John J. Ramsey*
DRAWN: *W. A. Samsonek*
CHECKED: *J.S.R.*
EXAMINED: *Mar 23 1959*
APPROVED: *Bl. P. ...*