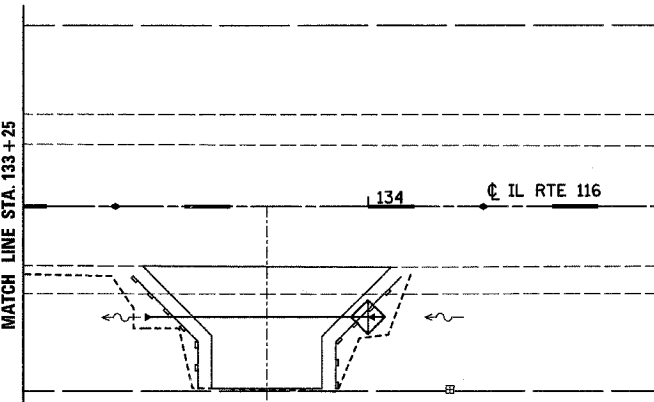
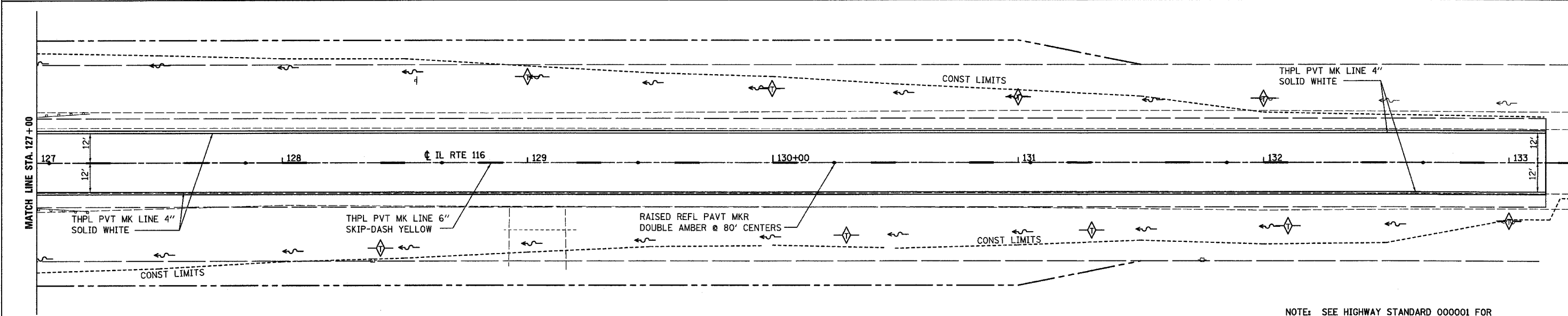
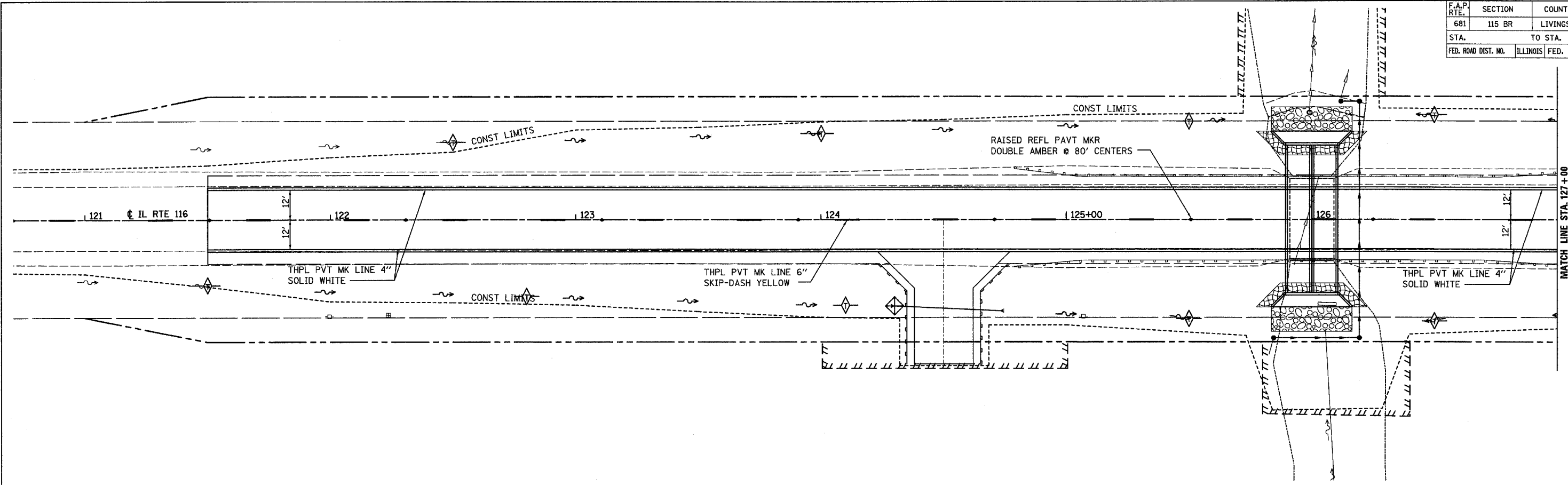
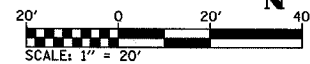


| F.A.P. RTE.         | SECTION | COUNTY     | TOTAL SHEETS     | SHEET NO. |
|---------------------|---------|------------|------------------|-----------|
| 681                 | 115 BR  | LIVINGSTON | 32               | 15        |
| STA.                |         | TO STA.    |                  |           |
| FED. ROAD DIST. NO. |         | ILLINOIS   | FED. AID PROJECT |           |



NOTE: SEE HIGHWAY STANDARD 000001 FOR LANDSCAPING AND EROSION CONTROL LEGEND.



| REVISIONS |      |
|-----------|------|
| NAME      | DATE |
|           |      |
|           |      |
|           |      |
|           |      |
|           |      |
|           |      |
|           |      |
|           |      |
|           |      |

ILLINOIS DEPARTMENT OF TRANSPORTATION

**EROSION CONTROL & PAVEMENT MARKING**

FAP ROUTE 681  
SECTION 115 BR  
LIVINGSTON COUNTY

PLOT DATE = 8/28/2007  
 FILE NAME = H:\P\26065\Files Copied from M Drive\Microstation\Working Project Files\shesha64.dgn  
 PLOT SCALE = 28.0000 / / IN.  
 USER NAME = #USER#