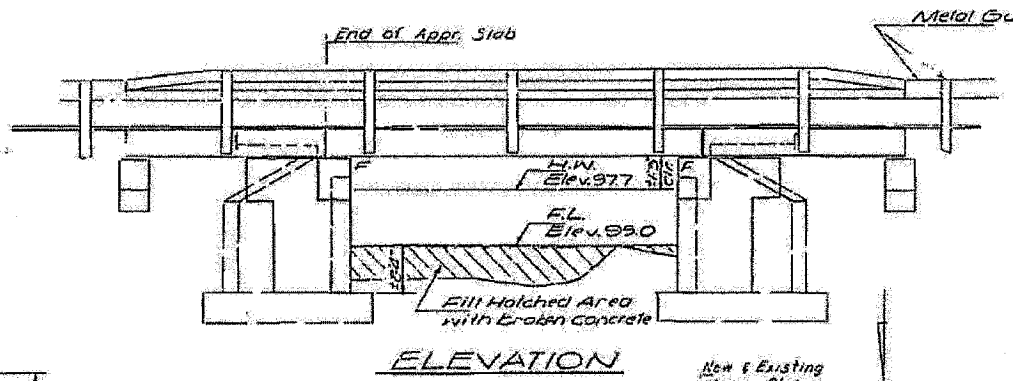


STATE OF ILLINOIS
DEPARTMENT OF PUBLIC WORKS & BUILDINGS
DIVISION OF HIGHWAYS

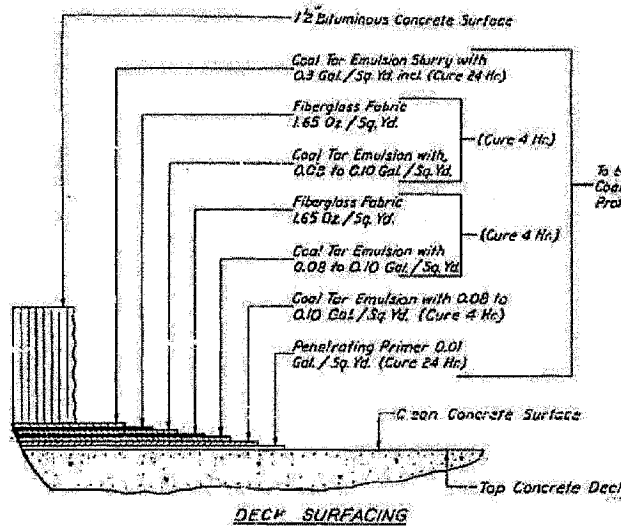
DATE	BY	REVISION	SHEET NO.

F.A.P. RTE.	SECTION	COUNTY	TOTAL SHEETS	SHEET NO.
681	115 BR	LIVINGSTON	32	21
STA.		TO STA.		
FED. ROAD DIST. NO.		ILLINOIS FED. AID PROJECT		

B.M. #4A Top of S.E. Wingwall
13.5' L. Dia. 12'5" Elev. 100.00
Existing Structure Dia. 12'6" x 10'
PC Conc. Slab 18'0" long 26" x 1" wide
Superstructure to be removed by Bridge Contractor.
No Salvage. Traffic to be maintained at all times by
Stag Construction



ELEVATION



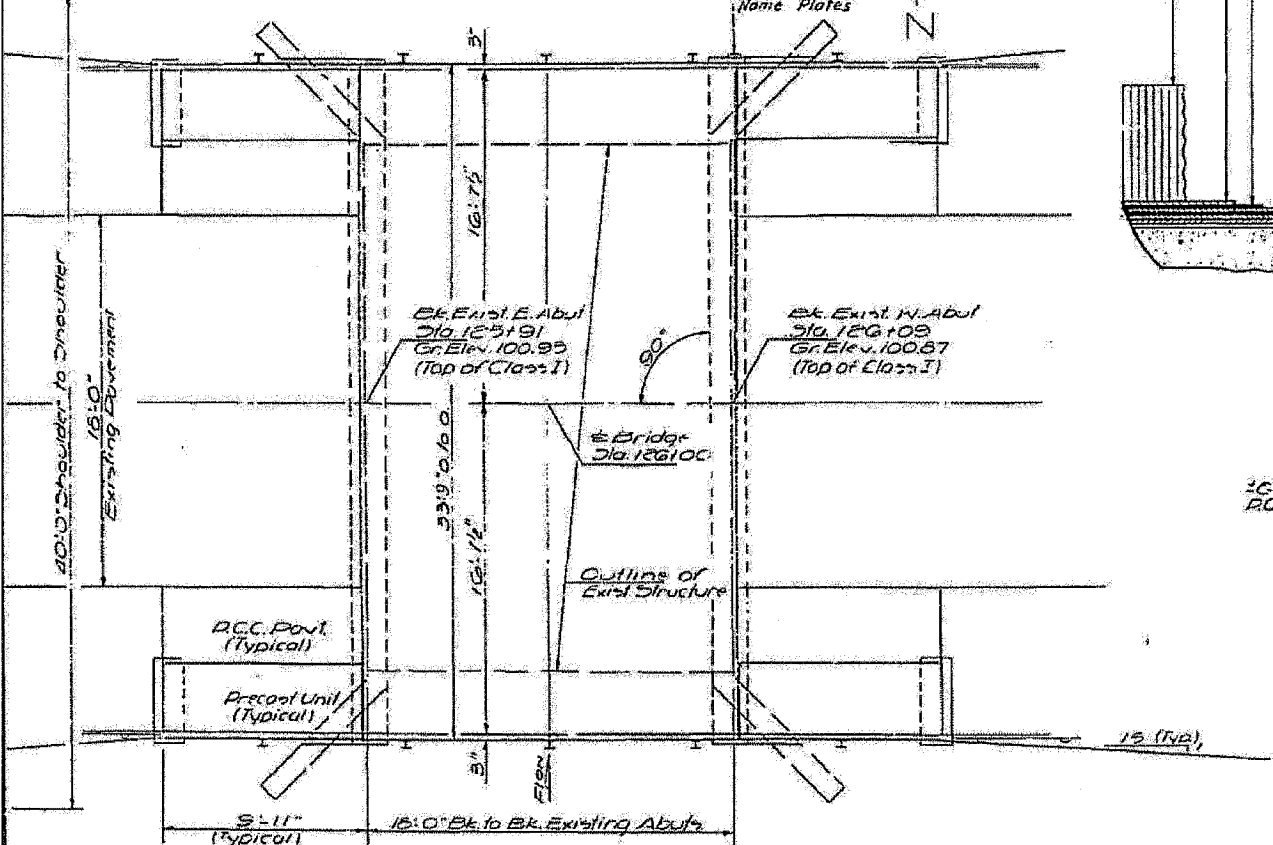
DECK SURFACING

GENERAL NOTES

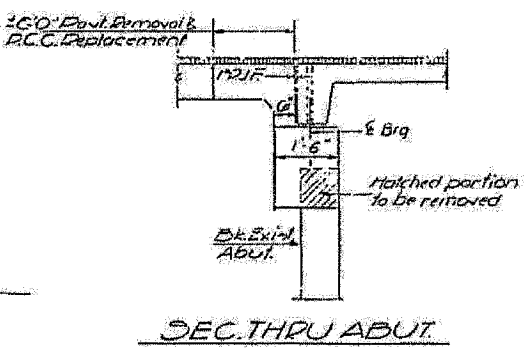
All reinforcement bars shall be lapped 24 diameters unless otherwise shown.
It shall be the responsibility of the Contractor to verify all dimensions and conditions existing in the field prior to construction and ordering of materials.
Limits of Cool Tar Interlayer Protective Coat shall be back to back of Abutments.
Expansion Belts shall consist of self-healing expansion strips and 3/4" hooked some hooked bolts shall extend a minimum of 12" into new concrete unless otherwise shown.
Shoulder transition to wingwall shall be shaped with broken concrete. COS incidental.

TOTAL BILL OF MATERIAL

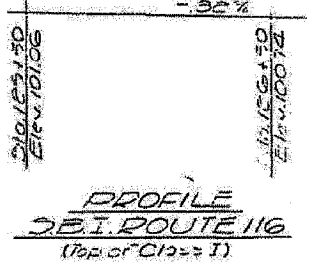
Item	Unit	Super	Sub	Total
Portland Cement Concrete Pavement (10')	Sq. Yds.	18		18
Pavement Fabric	Sq. Yds.	18		18
Concrete Removal	Cu. Yds.		4	4
Expansion Belts (4')	Each	24	76	100
Clips & Concrete	Cu. Yds.		133	133
Precast Concrete Bridge Slab	Sq. Ft.	751		751
Pavement Removal P.C.C. Replacement, Type 2 (18')	Sq. Yds.		8	8
Steel Rolling, Type N	Lin. Ft.	76		76
Reinforcement Bars	Lbs.		770	770
Removal of Existing Superstructures	Each		1	1
Cool Tar Interlayer Protective Coat	Sq. Yds.	68		68
Name Plate	Each		1	1
Temporary Guard Rail	Lin. Ft.		18	18



PLAN



SEC. THRU ABUT.



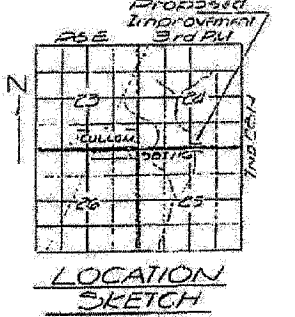
PROFILE
S.B.I. ROUTE 116
(Top of C12=1)

STATION 126+00
REBUILT 127 BR
STATE OF ILLINOIS
S.B.I. RT. 116 SEC 15 BR
LOADING HS 20
NAME PLATE
See Sta. 213+4

DESIGN STRESSES

FIELD UNITS
f_c = 1400 psi - Super
f_c = 1000 psi - Sub.
f_c = 20,000 psi - Reinfc.
f_t = 75 psi - Footing
n = 10

PRECAST UNITS
f_c = 4500 psi
f_c = 1800 psi
f_c = 20,000 psi
n = 8



LOCATION SKETCH

GENERAL PLAN & ELEVATION
S.B.I. ROUTE 116
SECTION 115 BR
LIVINGSTON COUNTY
STATION 126+00

WATERWAY INFORMATION

Drainage Area ----- 400 Acres
Character ----- level, clay, cultivated
Present Opening ----- 43 Sq. Ft.
Required Opening (170 yk Flood) ----- 43 Sq. Ft.
Proposed Opening ----- 43 Sq. Ft.
Q(50) = 175 cfs

LOADING HS 20-24

DESIGNED	November 17, 1970
CHECKED	EXAMINED
DRAWN	PASSED
CHECKED	APPROVED

EXISTING BRIDGE PLAN
FOR INFORMATION ONLY

FAP ROUTE 681
SECTION 115 BR
LIVINGSTON COUNTY

REVISIONS	
NAME	DATE

PLOT DATE = 06/26/2007
 FILE NAME = H:\P\2605A\Files Copied from M Drive\Microstation\Microstation Working Project Files\shwasa03.dgn
 PLOT SCALE = 28.0000 / 1 IN.
 USER NAME = MUSER