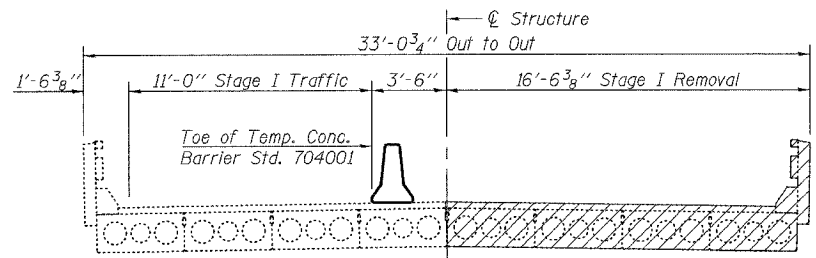
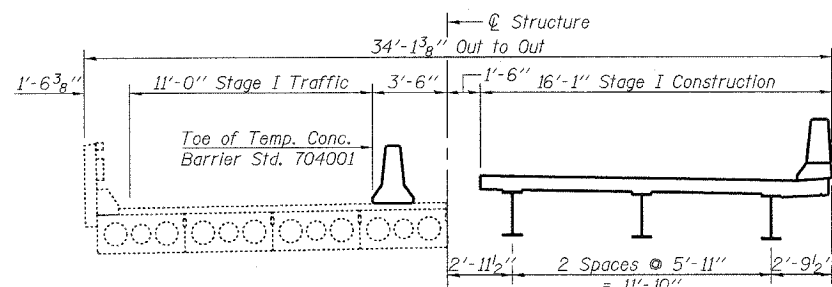


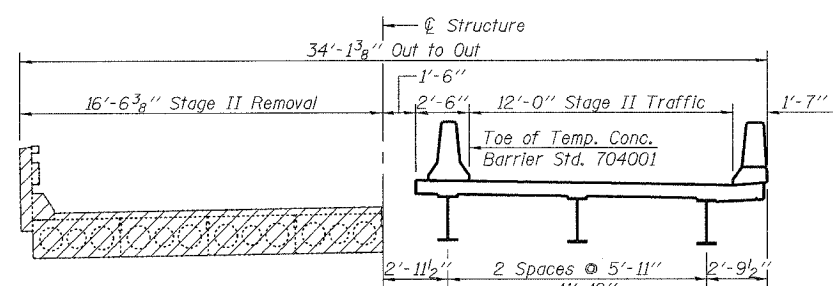
Contract #66697



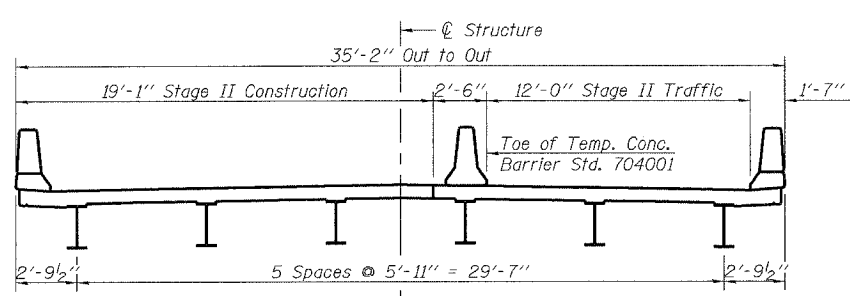
CROSS SECTION - STAGE I REMOVAL
(Looking West)



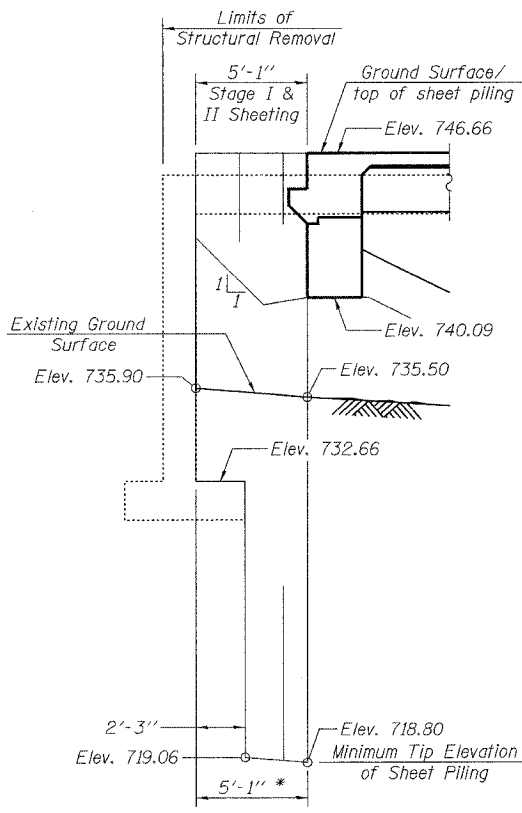
CROSS SECTION - STAGE I CONSTRUCTION
(Looking West)



CROSS SECTION - STAGE II REMOVAL
(Looking West)

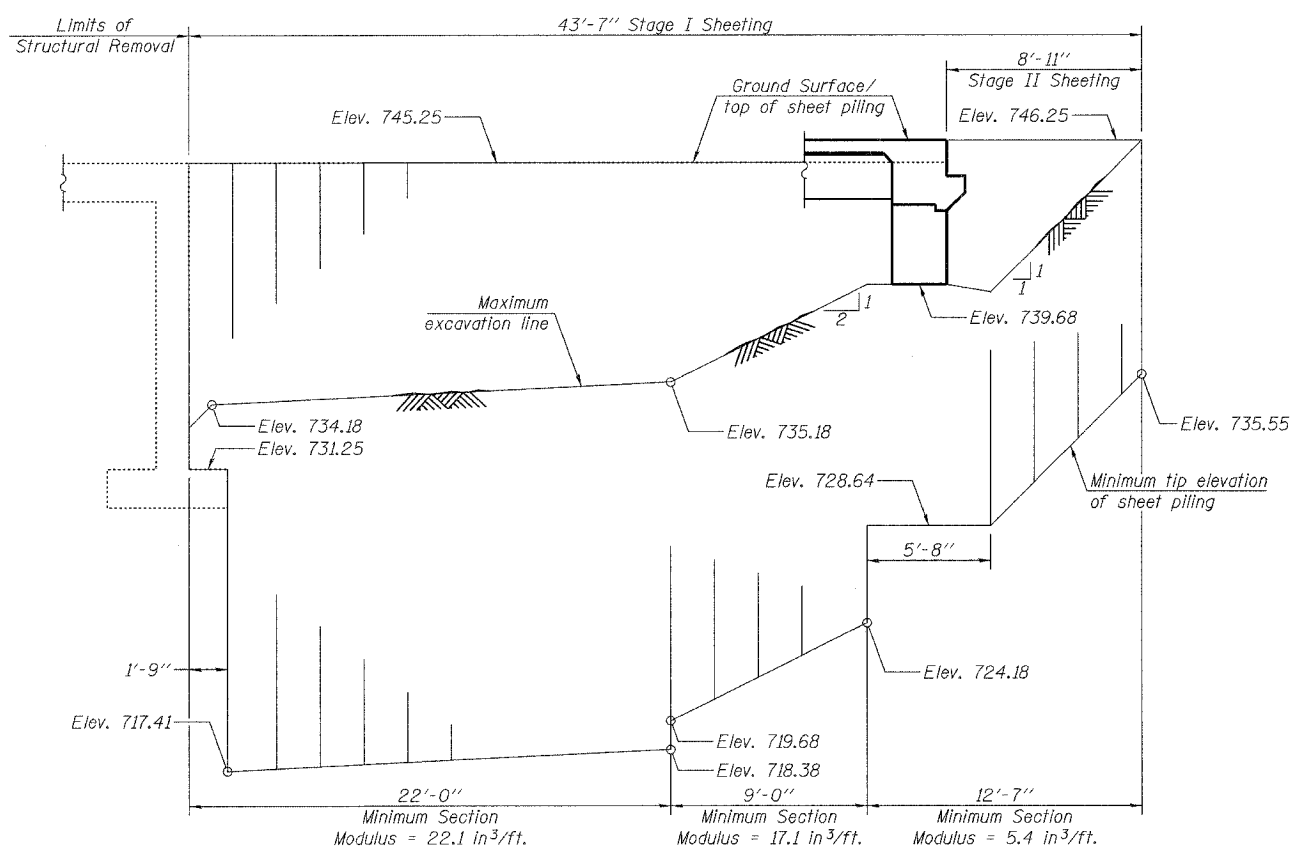


CROSS SECTION - STAGE II CONSTRUCTION
(Looking West)



**TEMPORARY SHEET PILING
EAST ABUTMENT**

* Minimum Section
Modulus = 20.3 in³/ft.



TEMPORARY SHEET PILING - WEST ABUTMENT

LEGEND:
 Removal of Existing Concrete Deck

NOTES:
 Removal of Bituminous Wearing Surface and Existing Bridge Rail is included with Removal of Existing Structures.
 See Sheet 17 of 20 for Temporary Concrete Barrier Details.
 Pay Item for Temporary Concrete Barrier is included with Roadway Plans.
 If the Contractor chooses to alter the temporary cantilevered sheet piling design requirements shown on the plans, a design submittal including plan details and calculations will be required for review and acceptance by the Engineer.
 The Contractor shall connect the first sheet to the existing abutment wall to ensure stability of sheets driven to the top of the existing footing. This connection shall be reviewed and accepted by the Engineer and included in the cost for Temporary Sheet Piling.

BILL OF MATERIAL

Item	Unit	Total
Temporary Sheet Piling	Sq. Ft.	1097
Removal of Existing Structures	Each	1

rjngroup
 Excellence through Ownership
 200 West Front Street
 Wheaton, IL 60187

ILLINOIS DEPARTMENT OF TRANSPORTATION
 CONSTRUCTION STAGING AND
 TEMPORARY SHEET PILE DESIGN
 IL RTE 9 OVER DRUMMER CREEK
 FAP RTE 693 - SECTION 19BR-1
 FORD COUNTY
 STATION 810+73.11
 STRUCTURE NO. 027-0096

DATE: 8/7/2007
 DRAWN BY LCM
 CHECKED BY BLB