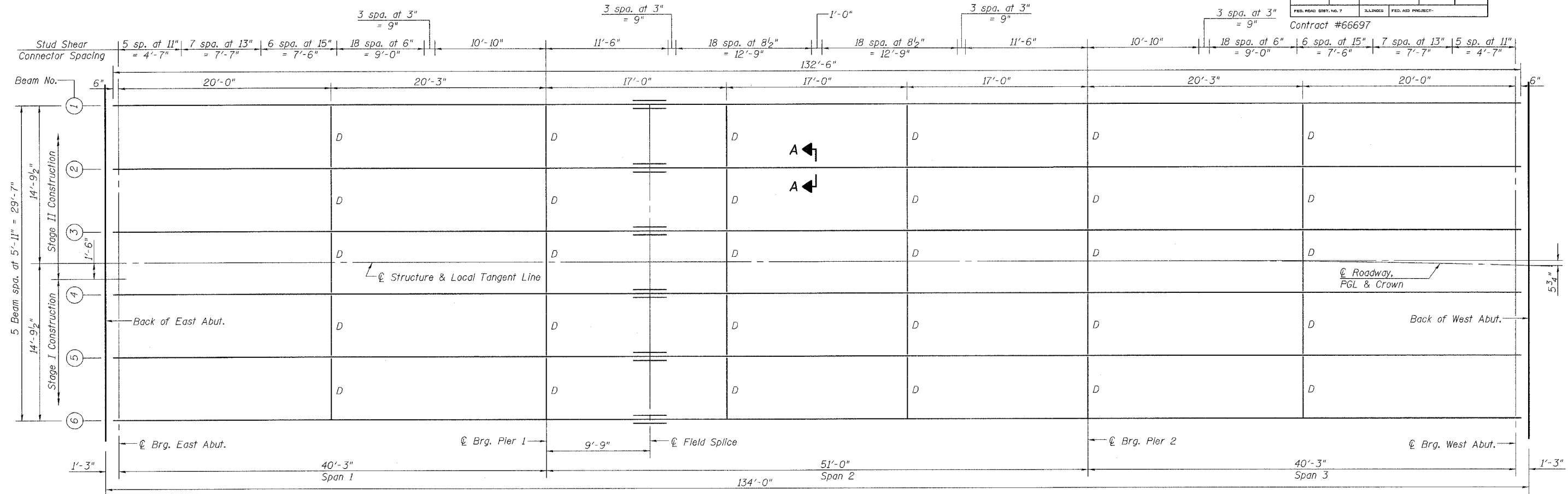


Contract #66697



FRAMING PLAN

All beams shall be W24x76 AASHTO M 270, Grade 50W (NTR)

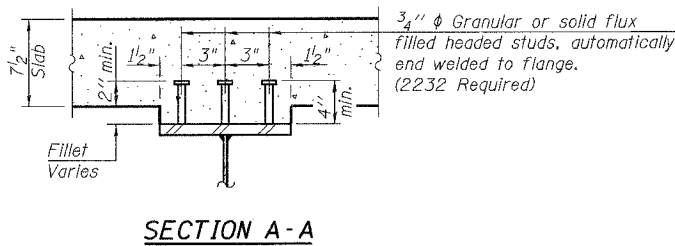
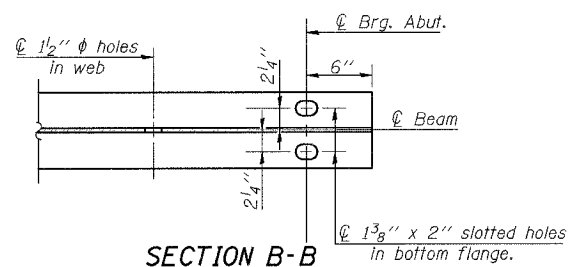
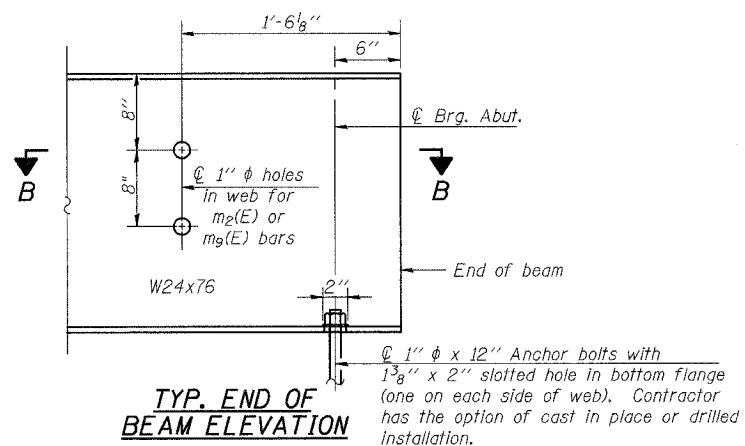
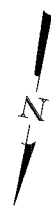
TOP OF BEAM ELEVATIONS*

Beam	Location	℄ Brg. E. Abut.	℄ Brg. Pier 1	℄ Splice	℄ Brg. Pier 2	℄ Brg. W. Abut.
Beam #1 Elev.		745.76	745.84	745.86	745.60	745.35
Beam #2 Elev.		745.86	745.94	745.96	745.70	745.45
Beam #3 Elev.		745.96	746.04	746.06	745.80	745.55
Beam #4 Elev.		745.96	746.04	746.06	745.80	745.56
Beam #5 Elev.		745.86	745.94	745.96	745.70	745.46
Beam #6 Elev.		745.76	745.84	745.86	745.60	745.36

* Elevations are before any deflections and are to be used for fabrication only.

NOTES

- D denotes interior diaphragm.
- See Sheet 12 of 20 for Field Splice, Bearings, Diaphragm Details, and Moment and Reaction Tables.
- All cross frames or diaphragms shall be installed as steel is erected and secured with erection pins and bolts except as otherwise noted. Individual cross frames or diaphragms at supports may be temporarily disconnected to install bearing anchor rods.
- Load carrying components designated "NTR" shall conform to the Supplemental Requirements for Notch Toughness, Zone 2.



rjngroup

Excellence through Ownership

200 West Front Street
Wheaton, IL 60187

ILLINOIS DEPARTMENT OF TRANSPORTATION

FRAMING PLAN
IL RTE 9 OVER DRUMMER CREEK
FAP RTE 693 - SECTION 19BR-1
FORD COUNTY
STATION 810+73.11
STRUCTURE NO. 027-0096

DATE: 8/7/2007

DRAWN BY WJV
CHECKED BY BLB