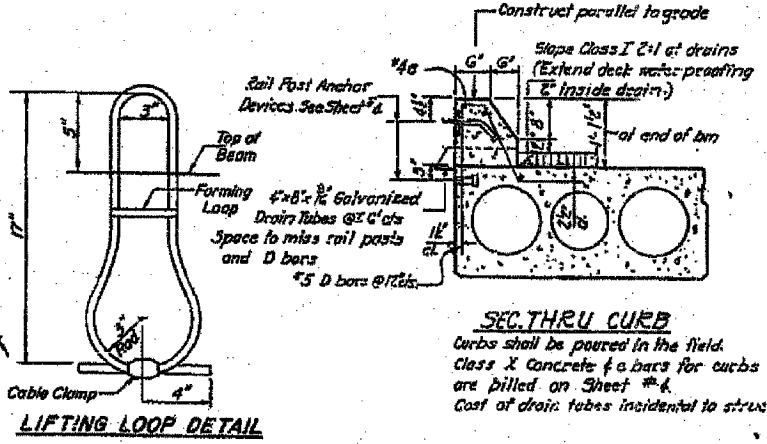
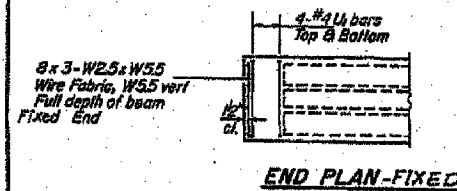
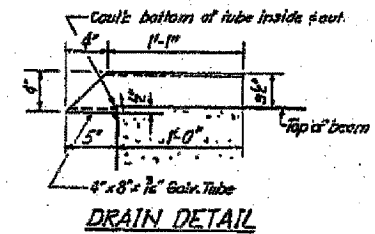
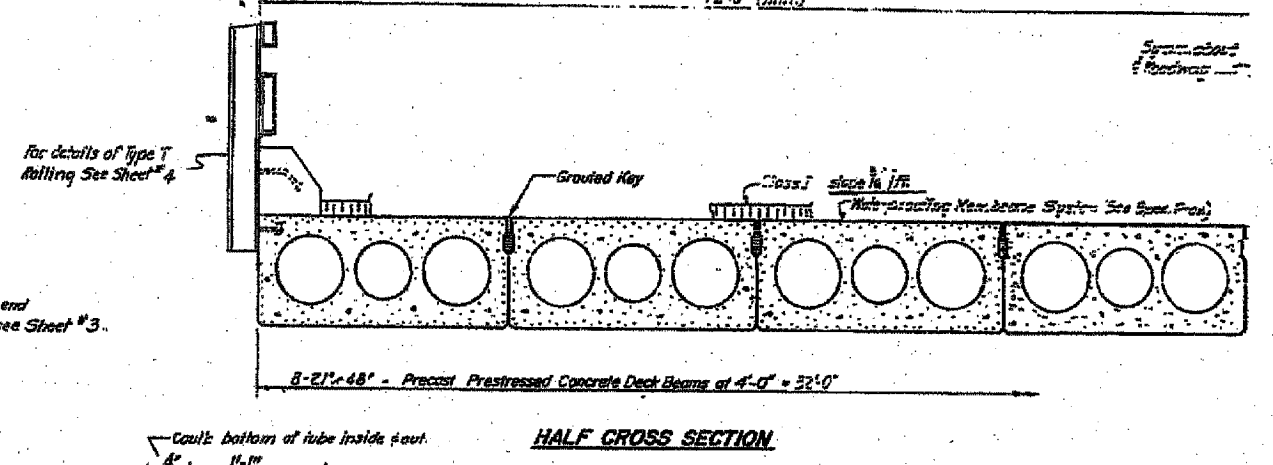
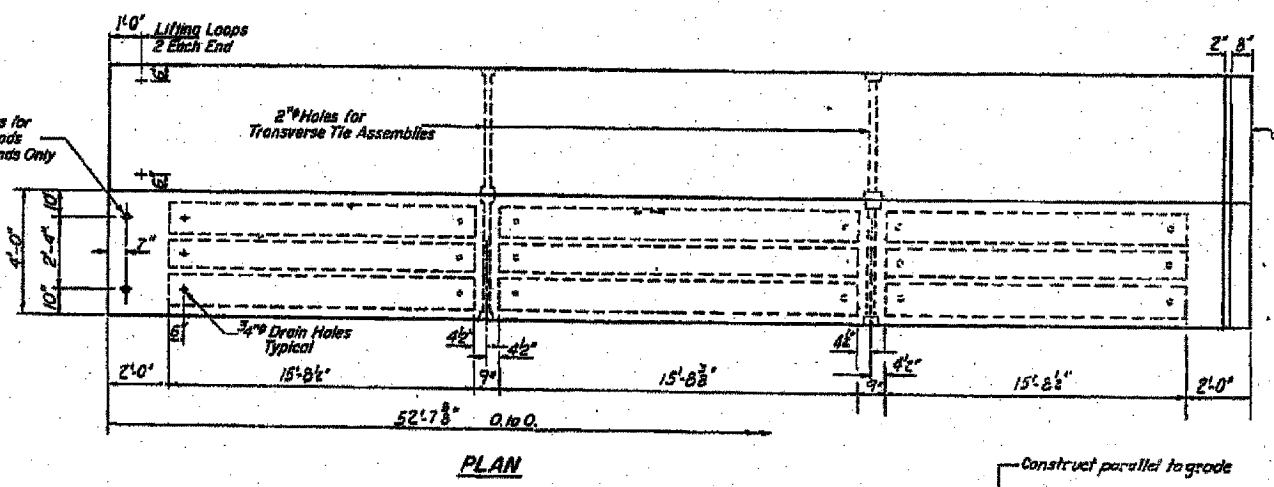
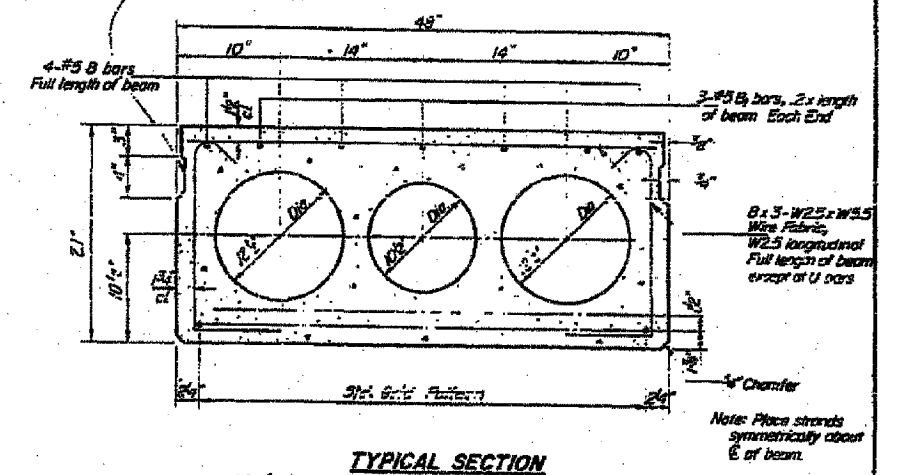
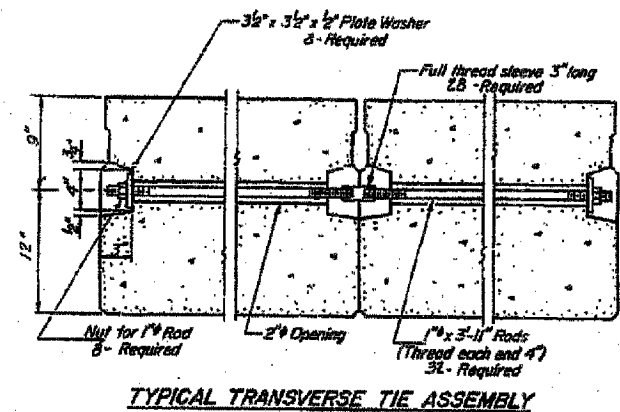
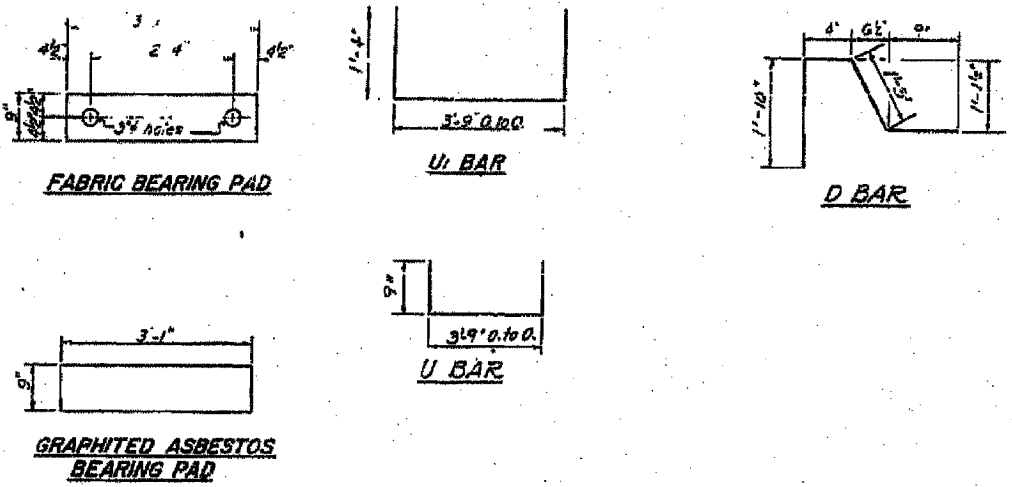


STATE OF ILLINOIS
DEPARTMENT OF TRANSPORTATION

PROJECT NO.	75(1,2)	FORD 42	21	SHEET NO. 2
DATE	PA-672 (10-28-53)			SHEETS



NOTES

Prestressing steel shall be non-galvanized high strength, stress-relieved 7-wire strand, Grade 270. The nominal diameter shall be 5/8" and the nominal cross-sectional area shall be 0.153 sq. in. Lifting loops shall be 5/8" diameter, 6 x 25 class wire rope with fiber core and shall have a minimum ultimate tensile strength of 40,000 lbs.

The 1" rods in the transverse tie assembly shall be tightened to a snug fit and the threads set. Fasteners that receive transverse tie bar on outside shall be filled with grout after transverse tie assembly is in place.

Longitudinal shear keys shall be packed with a very dry mix of 2:1 sand and P.C. mortar. After beams have been erected, holes for the dowel anchors shall be drilled into the sub-structure and the anchor dowels shall be grouted in place.

Reinforcement bars shall conform to AASHTO: M-31 or M-53, Grade 60.

BILL OF MATERIAL

Bar	No.	Size	Length	Shape
g	G	#5	52'-0"	
Precast Prestressed Concrete Deck Beams		Sq. Ft	3323	
Class X Concrete		Cu. Yd.	1-3	
Reinforcement Bars		Pounds	280	

DESIGNED Patrick M. Petrus
CHECKED C. A. Holzman
DRAWN Anna V. ...
CHECKED C. A. H.

EXAMINED [Signature]
PASSED
APPROVED

PD-4-S 8-1-78

Cost of reinforcement and accessories cast into the beams, of bearing pods, of armor angles, and of grouting longitudinal shear keys is included in unit price bid for Precast Prestressed Concrete Deck Beams.

SUPERSTRUCTURE
F.A.R.L. 633 SEC. 13 BR
FORD COUNTY
STA. 210+65.00