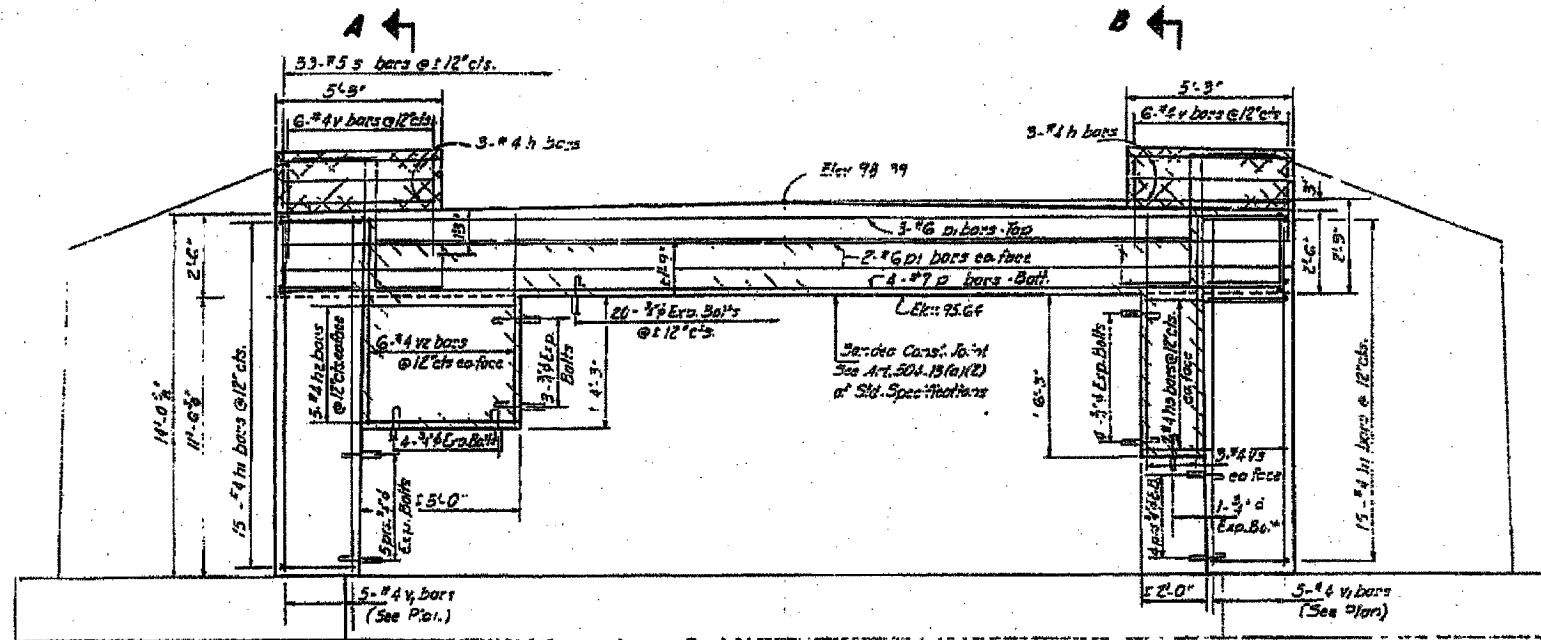
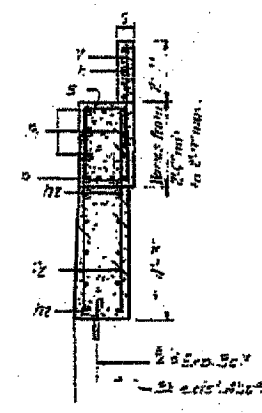


STATE OF ILLINOIS
DEPARTMENT OF TRANSPORTATION

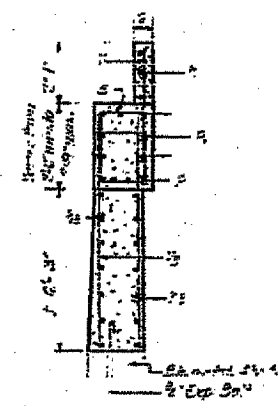
DATE	BY	CHKD	APP'D	SHEET NO.
10/15/88	E.A.H.	E.A.H.	E.A.H.	24
PROJECT: FORD 42				SHEETS



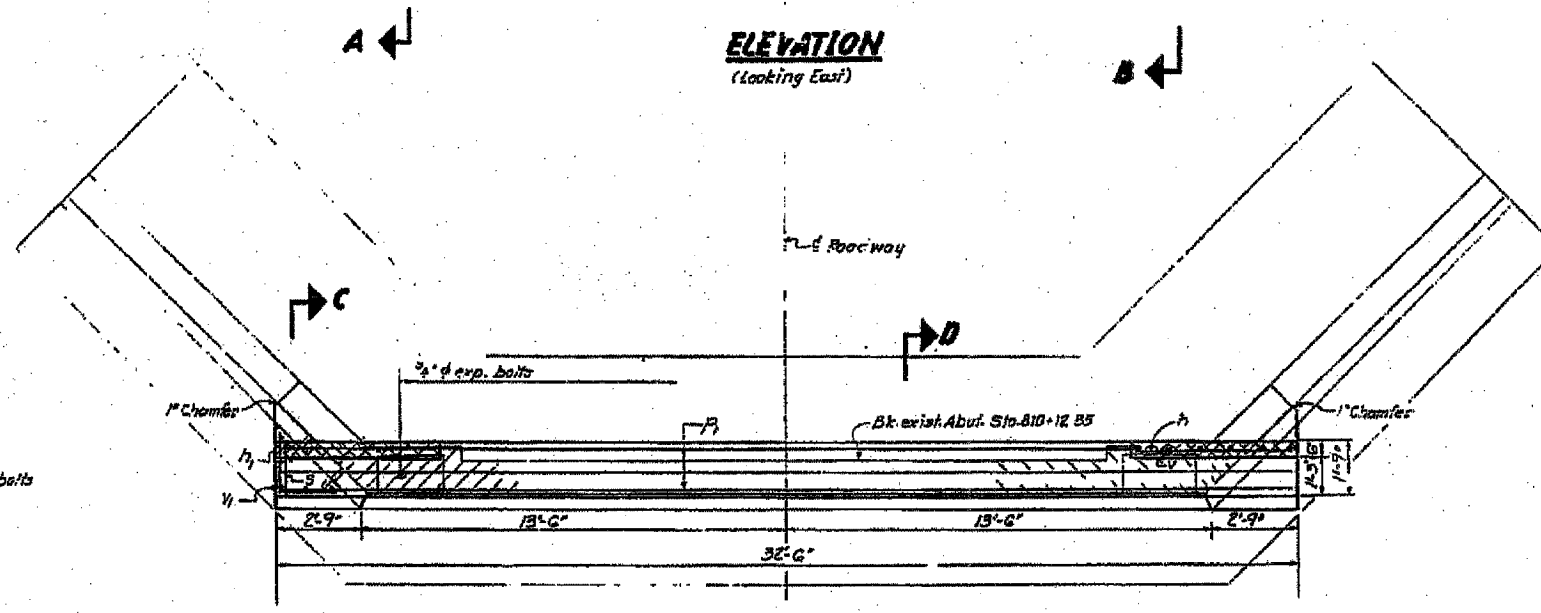
ELEVATION
(Looking East)



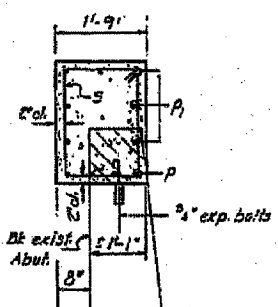
SEC. A-A



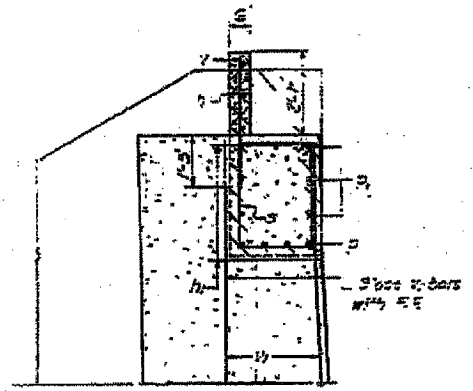
SEC. B-B



PLAN



SEC. D-D

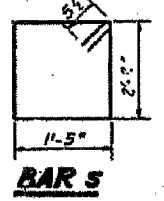


SEC. C-C

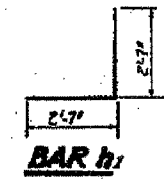
BILL OF MATERIAL

Seq.	No.	Size	Length	Shape
1	2	#4	3'-0"	—
2	30	#4	3'-2"	—
3	20	#4	7'-0"	—
4	14	#4	4'-0"	—
5	4	#7	3'-3"	—
6	7	#6	3'-3"	—
7	33	#5	4'-0"	—
8	12	#4	3'-2"	—
9	20	#4	13'-9"	—
10	2	#4	6'-0"	—
11	6	#4	8'-0"	—
Concrete Removal (Cu. Yds.) 5				
Class A Concrete (Cu. Yds.) 17.0				
Reinforcement Bars (Welded) 1288				
Expansion Bolts (#4) Each 50				

Notes:
 Hatched areas indicate Concrete Removal.
 Reinforcement in existing concrete areas shall be cleaned and incorporated into the new construction.
 Cuts hatched area shall be poured after beams are in place.
 Expansion bolts shall be anchored in sound concrete.
 All edges shall have standard 3/4" chamfers except as noted.
 For Concrete Removal sketch see sheet 39.



BAR S



BAR h

DESIGNED: Patrick M. Peter	EXAMINED: [Signature]
CHECKED: E.A. Hodgson	PASSED: [Signature]
DRAWN: Simon H. H. [Signature]	APPROVED: [Signature]
CHECKED: E.A.H.	

EAST ABUTMENT
FAH 693 SEC. 198R
FORD COUNTY
STA. 810+65+80